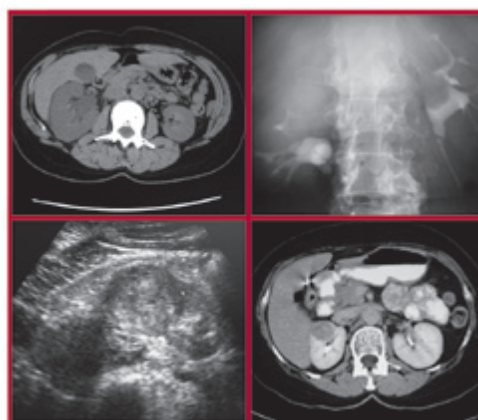


# Assessment of Microscopic Hematuria in Adults

MARY M. MCDONALD, M.D., DANIEL SWAGERTY, M.D., M.P.H., and LOUIS WETZEL, M.D.  
*University of Kansas School of Medicine, Kansas City, Kansas*

Microscopic hematuria, a common finding on routine urinalysis of adults, is clinically significant when three to five red blood cells per high-power field are visible. Etiologies of microscopic hematuria range from incidental causes to life-threatening urinary tract neoplasms. The lack of evidence-based imaging guidelines can complicate the family physician's decision about the best way to proceed. Patients with proteinuria, red cell casts, and elevated serum creatinine levels should be referred promptly to a nephrology subspecialist. Microscopic hematuria with signs of urinary tract infection should resolve with appropriate treatment of the underlying infection. Patients with asymptomatic microscopic hematuria or with hematuria persisting after treatment of urinary tract infection also need to be evaluated. Because upper and lower urinary tract pathologies often coexist, patients should be evaluated using cytology plus intravenous urography, computed tomography, or ultrasonography. When urine cytology results are abnormal, cystoscopy should be performed to complete the investigation. (*Am Fam Physician* 2006;73:1748-54, 1759. Copyright © 2006 American Academy of Family Physicians.)



► **Patient information:**  
A handout on microscopic hematuria, written by the authors of this article, is provided on page 1759.

**T**he prevalence of asymptomatic microscopic hematuria in adults ranges from 0.19 to 21 percent.<sup>1</sup> The range is wide because of differing definitions of clinically significant microscopic hematuria and varying ages of the study populations. Urine normally contains a few red blood cells, and microscopic hematuria generally is defined as one to 10 red blood cells per high-power field of urine sediment.<sup>2</sup> The American Urological Association (AUA) defines clinically significant microscopic hematuria as three or more red blood cells per high-power field on microscopic evaluation of urinary sediment from two of three properly collected urinalysis specimens.<sup>1,3</sup> Each laboratory, however, establishes its own thresholds based on the method of detection used and in reference to healthy persons as controls. Urine dipstick evaluation may be misleading because it lacks the ability to

distinguish red blood cells from myoglobin or hemoglobin. Therefore, a positive finding of microscopic hematuria on urinary dipstick testing requires follow-up examination by microscopic technique to confirm the presence of red blood cells.

Microscopic hematuria, unlike gross hematuria, is often an incidental finding but may be associated with urologic malignancy in up to 10 percent of adults.<sup>4,5</sup> Despite this risk, results of a recent study<sup>6</sup> revealed that 39 to 90 percent of persons with microscopic hematuria on screening urinalysis received no follow-up testing. Microscopic hematuria presents a challenging clinical scenario for family physicians. Obtaining a thorough history and physical examination and assessing each patient's risk factors for urothelial cancer can assist physicians in choosing how to proceed with radiographic evaluation of the upper urinary tract, urine cytology, or cystoscopy. An algorithmic approach to the diagnosis and management of microscopic hematuria is provided in *Figure 1*.

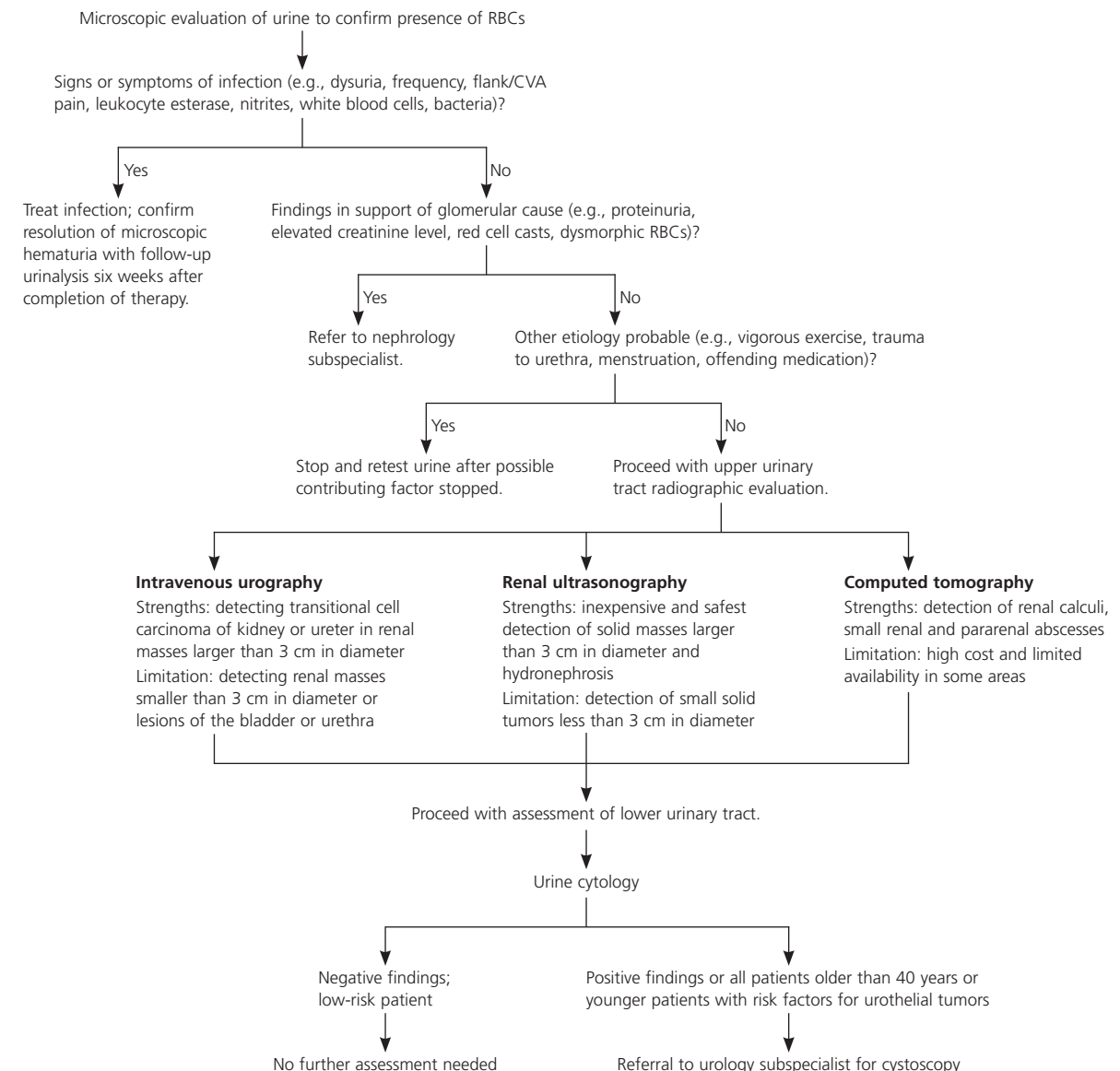
**Microscopic hematuria becomes clinically significant when three or more red cells are visible per high-power field on two of three properly collected urine samples.**

**SORT: KEY RECOMMENDATIONS FOR PRACTICE**

Clinical recommendation	Evidence rating	References
Screening asymptomatic patients for microscopic hematuria generally is not recommended.	C	1
Patients who have findings consistent with glomerular pathology should be referred promptly to a nephrology subspecialist.	C	2
Patients with microscopic hematuria should have radiographic assessment of the upper urinary tract followed by urine cytology studies.	C	1
All patients with microscopic hematuria who are older than 40 years, those who are younger but have risk factors for bladder cancer, and those with abnormal urine cytology results should have cystoscopy in addition to radiographic assessment.	C	1

A = consistent, good-quality patient-oriented evidence; B = inconsistent or limited quality patient-oriented evidence; C = consensus, disease-oriented evidence, usual practice, expert opinion, or case series. For information about the SORT evidence rating system, see page 1687 or <http://www.aafp.org/afpsort.xml>.

**Microscopic Hematuria in Adults**



NOTE: High risk = smoking, history of urothelial neoplasm, age older than 40 years, occupational exposure to benzenes or aromatic amines.

**Figure 1.** Algorithmic approach to microscopic hematuria in adults. (CVA = costovertebral angle; RBC = red blood cell.)

**TABLE 1**  
**Recognized Causes of Microscopic Hematuria**

**Glomerular causes**

Alport's syndrome  
 Fabry's disease  
 Goodpasture's syndrome  
 Hemolytic uremia  
 Henoch-Schönlein purpura  
 Immunoglobulin A nephropathy  
 Lupus nephritis  
 Membranoproliferative glomerulonephritis  
 Mesangial proliferative glomerulonephritis  
 Nail-patella syndrome  
 Other postinfectious glomerulonephritis: endocarditis, viral  
 Poststreptococcal glomerulonephritis  
 Thin basement membrane nephropathy (benign familial hematuria)  
 Wegener's granulomatosis

**Nonglomerular causes**

Renal (tubulointerstitial)  
 Acute tubular necrosis  
 Familial  
 Hereditary nephritis  
 Medullary cystic disease  
 Multicystic kidney disease  
 Polycystic kidney disease  
 Infection: pyelonephritis, tuberculosis (e.g., travel to Indian subcontinent), schistosomiasis (e.g., travel to Africa)  
 Interstitial nephritis  
 Drug induced: penicillins, cephalosporins, diuretics, nonsteroidal anti-inflammatory drugs, cyclophosphamide (Cytoxan), chlorpromazine (Thorazine), anticonvulsants  
 Infection: syphilis, toxoplasmosis, cytomegalovirus, Epstein-Barr virus  
 Systemic disease: sarcoidosis, lymphoma, Sjögren's syndrome  
 Loin pain-hematuria syndrome  
 Metabolic  
 Hypercalciuria  
 Hyperuricosuria

**Nonglomerular causes (continued)**

Renal cell carcinoma  
 Solitary renal cyst  
 Vascular disease  
 Arteriovenous malformation  
 Malignant hypertension  
 Renal artery embolism/thrombosis  
 Renal venous thrombosis  
 Sickle cell disease  
 Extrarenal  
 Benign prostatic hypertrophy  
 Calculi  
 Coagulopathy related  
 Drug induced (warfarin [Coumadin], heparin)  
 Secondary to systemic disease  
 Congenital abnormalities  
 Endometriosis  
 Factitious  
 Foreign bodies  
 Infection: prostate, epididymis, urethra, bladder  
 Inflammation: drug or radiation induced  
 Perineal irritation  
 Posterior ureteral valves  
 Strictures  
 Transitional cell carcinoma of ureter, bladder  
 Trauma: catheterization, blunt trauma  
 Tumor  
 Other causes  
 Exercise hematuria  
 Menstrual contamination  
 Sexual intercourse

*Information from references 2, 3, and 7 through 9.*

**Etiology and Clinical Diagnosis**

The etiologies of microscopic hematuria are numerous and range from clinically insignificant causes to potentially life-threatening neoplastic lesions<sup>5</sup> (Table 1<sup>2,3,7-9</sup>). In one study<sup>5</sup> of 1,930 patients who had complete urologic evaluation for hematuria, 982 had microscopic hematuria. Nearly one in five patients with microscopic hematuria had significant disease compared with about one in three patients with gross hematuria. In this study,<sup>5</sup> 92 (9.4 percent) of the patients with microscopic hematuria had cancer. Evaluation of the upper urinary tract followed by cystoscopy fails to identify the source of microscopic

hematuria in 19 to 68 percent of patients.<sup>2,5,10-14</sup> Finally, the younger the patient, the less likely it is the etiology will be identified.<sup>15</sup>

Although screening asymptomatic patients is not generally recommended,<sup>1</sup> microscopic hematuria is still diagnosed incidentally by urine dipstick studies. Many available urine dipstick tests are so sensitive that they can detect as few as one or two red blood cells per high-power field.<sup>2</sup> However, these tests cannot distinguish among myoglobin, hemoglobin, and red blood cells. Urine dipstick testing is 91 to 100 percent sensitive and 65 to 99 percent specific for detection of red blood cells, hemoglobin,

**TABLE 2**  
**Medications That Can Cause Hematuria**

Aminoglycosides	Cyclophosphamide (Cytoxan)
Amitriptyline	Diuretics
Analgesics	Oral contraceptives
Anticonvulsants	Penicillins (extended spectrum)
Aspirin	Quinine (QM-260)
Busulfan (Busulfex)	Vincristine (Oncovin)
Chlorpromazine (Thorazine)	Warfarin (Coumadin)

Information from references 7 and 9.

and myoglobin.<sup>16-19</sup> A positive finding on urine dipstick testing should be evaluated further by microscopic analysis to confirm the finding of red blood cells.

The most typical clinical scenario for finding microscopic hematuria is during the evaluation of patients with suspected urinary tract infection. The urine dipstick may reveal blood as well as the leukocyte esterase, nitrites, and bacteria consistent with the patient's symptoms. In such cases, treatment with antibiotics should lead to resolution of microscopic hematuria as demonstrated by follow-up urine studies six weeks after therapy. When microscopic hematuria resolves in this scenario, no further evaluation is necessary.<sup>1</sup>

Transient microscopic hematuria can be caused by vigorous physical exercise, sexual intercourse, trauma, digital rectal prostate examination, or menstrual contamination. If transient microscopic hematuria is suspected, follow-up urine studies should demonstrate resolution 48 hours after the discontinuation of these activities. It should be noted, however, that renal cell carcinoma and urothelial tumors also may present with transient microscopic hematuria.<sup>2</sup>

Obtaining a history can reveal important clues about the cause of microscopic hematuria. Medications should be reviewed carefully because several common medications such as analgesics and extended-spectrum penicillins can cause hematuria (Table 2<sup>7,9</sup>). Routine use of warfarin (Coumadin) should not cause hematuria unless there is an underlying urologic abnormality.<sup>3</sup> A brief travel and occupation history may reveal risk factors for pathogen or chemical exposure associated with hematuria (Table 1<sup>2,3,7-9</sup>).

Because the history and physical examination often fail to identify the probable etiology of asymptomatic microscopic hematuria, physicians should evaluate patients for signs of glomerular disease. Findings in support of glomerular etiology include proteinuria (i.e., greater than 300 mg in a 24-hour urine

sampling), elevated creatinine levels, red cell casts, or dysmorphic red blood cells.<sup>1,2</sup> In one study<sup>15</sup> involving 165 adults with microscopic hematuria who received renal biopsies, it was revealed that nearly one half of participants had renal abnormalities consistent with glomerular disease, most often immunoglobulin A nephropathy or thin basement membrane nephropathy. Glomerular causes of microscopic hematuria warrant prompt referral to a nephrology subspecialist for further investigation and possible renal biopsy.<sup>2</sup>

In the event that infection, harmless transient microscopic hematuria, or a glomerular etiology is not identified, patients should receive upper urinary tract imaging, urine cytology, and perhaps cystoscopy. Nonglomerular sources of microscopic hematuria are summarized in Table 1.<sup>2,3,7-9</sup>

### Radiographic Assessment of the Upper Urinary Tract

Intravenous urography, ultrasonography, and computed tomography (CT) often are used to evaluate the upper urinary tract of persons with microscopic hematuria. Although many studies have been conducted comparing the three radiographic methods, no clear evidence-based imaging guidelines are available.<sup>1</sup>

#### INTRAVENOUS UROGRAPHY

Traditionally, intravenous urography (Figure 2) has been the initial radiographic approach for the evaluation of the upper urinary tract in patients with microscopic



**Figure 2.** Intravenous urogram of transitional cell carcinoma in a 60-year-old woman with a two-month history of intermittent left flank pain and microscopic hematuria. Left side down oblique view at 18 minutes confirms small polypoid mass (arrows) arising from the medial wall of the renal pelvis.

## Hematuria

hematuria.<sup>7,20</sup> It defines the anatomy of the urologic tract from the kidney to the bladder, and its advantages include relatively low cost and ready availability.<sup>8</sup> One concern regarding intravenous urography as the sole radiographic evaluation of microscopic hematuria is its limited sensitivity for detecting small renal masses.<sup>21</sup> In a recent study,<sup>21</sup> investigators found that intravenous urography identified 85 percent of lesions greater than 3 cm in diameter but only 21 to 52 percent of smaller lesions. Intravenous urography is superior to CT in detecting transitional cell carcinoma involving the kidney or ureter but has limited application in the evaluation of the bladder and urethra.<sup>7</sup> Patients undergoing intravenous urography are exposed to contrast media that is potentially nephrotoxic, especially to patients with renal insufficiency. The cost savings of intravenous urography may be offset by the frequent need for follow-up study with ultrasonography or CT for indeterminate findings or to better characterize a renal lesion as cystic or solid.

### RENAL ULTRASONOGRAPHY

Ultrasonography (*Figure 3*) is the least expensive and safest choice for evaluating microscopic hematuria because it does not expose the patient to intravenous radiographic contrast medium. It is also an appropriate choice for the evaluation of hematuria during pregnancy. Although ultrasonography is limited in its ability to detect solid

tumors that are less than 3 cm in diameter,<sup>22</sup> masses 3 cm or greater in diameter, cysts, and hydronephrosis are detected with a high degree of sensitivity.<sup>20</sup> Ultrasonography has been found to be more sensitive than intravenous urography in detecting renal cell carcinoma but less so in detecting urothelial transitional cell carcinoma.<sup>1,20</sup> The sensitivity of ultrasonography for detecting renal calculi has been found to be 64 to 96 percent, significantly lower than with noncontrast CT.<sup>20</sup>

### COMPUTED TOMOGRAPHY

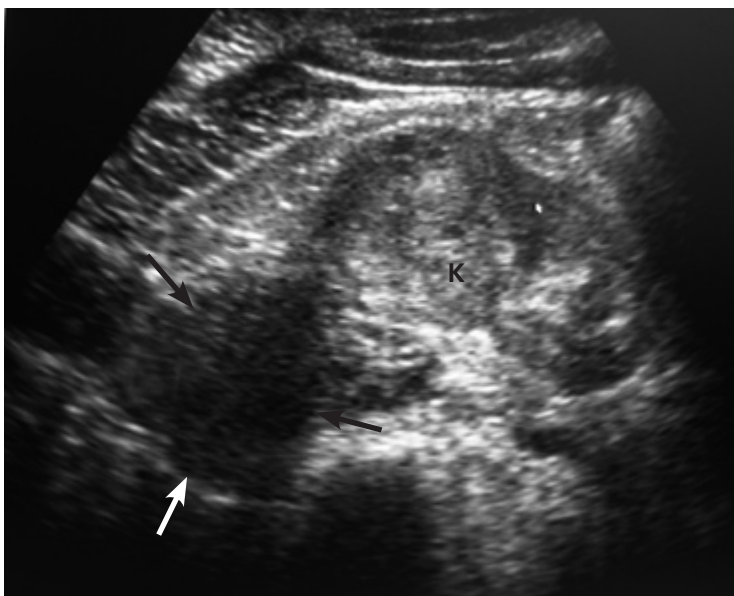
Microscopic hematuria associated with renal colic is best evaluated with CT in light of its high sensitivity for identifying renal calculi.<sup>21,23</sup> Unenhanced helical CT (*Figure 4*) is more accurate for evaluating patients with renal colic compared with ultrasonography, intravenous urography, or plain radiography and has replaced these imaging techniques as the test of choice in many institutions.<sup>23</sup> When compared with intravenous urography, unenhanced helical CT has the advantage of higher accuracy, decreased radiation dose, faster examination time, and improved sizing and localization of stones.

Contrast-enhanced CT (*Figure 5*) has favorable sensitivity over intravenous urography or ultrasonography for identifying small renal parenchymal masses. Contrast-enhanced CT also enables detection of aneurysms in vessels that run along the ureter, a potentially life-threatening, albeit uncommon, condition.<sup>21</sup> Renal and perirenal abscesses are best evaluated by contrast-enhanced CT.<sup>1</sup> After a renal mass has been identified by intravenous urography or ultrasonography, CT likely would be indicated as follow-up evaluation to better characterize the mass as a simple cyst, complex cyst, or solid mass, or to stage for surgical planning. This alone may warrant initial evaluation by CT despite its higher cost.

Although not widely supported in the literature, magnetic resonance imaging can be used to assess the upper urinary tract. Its high cost and lack of availability in many locations often are prohibitive, and CT is approximately as sensitive in detecting small parenchymal masses.<sup>7</sup> In select cases, angiography may be helpful if a small arteriovenous malformation is a concern.<sup>7</sup>

### Evaluation of the Lower Urinary Tract

Identifying an abnormality in the upper urinary tract does not preclude evaluation of

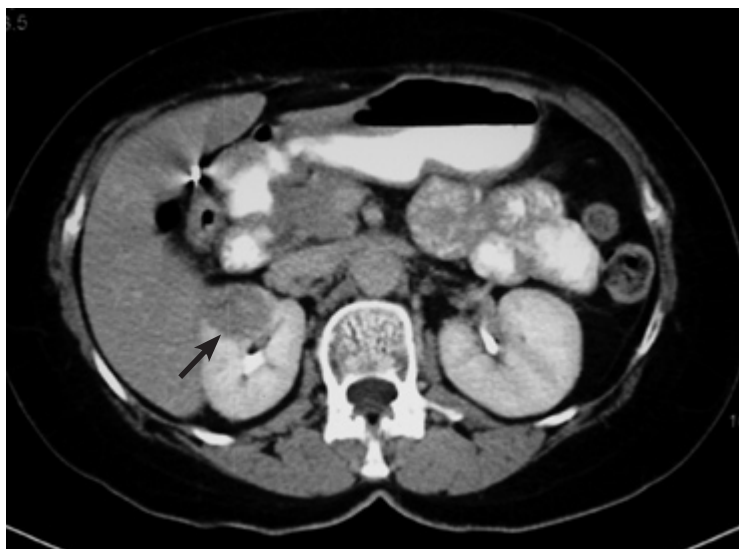


**Figure 3.** Ultrasound of renal carcinoma in a 51-year-old man with head and neck carcinoma and incidental hematuria noted on routine urinalysis during follow-up. Transverse scan through the lower pole shows lateral exophytic mass (arrows) in relation to the normal kidney tissue (K). Renal carcinoma was proven at surgery.

the lower urinary tract because a comorbid lesion may exist. The etiology of asymptomatic microscopic hematuria remains unclear in 70 percent of patients after imaging of the upper urinary tract and assessment of urine for signs of glomerular disease.<sup>2</sup> Urine cytology studies and cystoscopy are used routinely to evaluate the lower urinary tract.



**Figure 4.** Unenhanced helical computed tomogram of urolithiasis in a 49-year-old woman with a three-day history of dull right flank pain radiating to the groin and microscopic hematuria. Image shown at the level of the renal sinus. The right kidney is enlarged and shows hydronephrosis (*long arrow*). Note tiny right renal calculus (*short arrow*). Left kidney is normal.



**Figure 5.** Contrast-enhanced computed tomogram of a small renal carcinoma in a 59-year-old asymptomatic woman with microscopic hematuria. Delayed scan shows definite delineation of small right renal mass (*arrow*).

#### URINE CYTOLOGY

The AUA recommends that patients with microscopic hematuria have radiographic assessment of the upper urinary tract followed by urine cytology studies.<sup>1</sup> Voided urine cytology studies are less sensitive (66 and 79 percent in two studies) than cystoscopy for the evaluation of bladder cancer.<sup>2</sup> The sensitivity can be optimized by following urine collection protocols in which urine is collected from the first void of the morning on three consecutive days.<sup>2</sup> Urine cytology does, however, have high specificity (95 and 100 percent in two studies).<sup>2</sup> The sensitivity of urine cytology is highest for detection of high-grade lesions in the bladder and carcinoma in situ.<sup>24</sup> The primary advantage of urine cytology versus cystoscopy is that because it is noninvasive, it does not cause the patient any discomfort. Urine cytology is limited in its ability to detect low-grade lesions in the bladder as well as renal cell cancer.<sup>24</sup>

#### CYSTOSCOPY

The AUA recommends that all patients older than 40 years and those who are younger but have risk factors for bladder cancer obtain cystoscopy to complete the evaluation of microscopic hematuria.<sup>1</sup> Abnormal urine cytology findings also would necessitate cystoscopy, which has 87 percent sensitivity for bladder cancer.<sup>2</sup> Cystoscopy is the only reliable method of detecting transitional cell carcinoma of the bladder and the urethra.<sup>8</sup> The primary disadvantages of cystoscopy are patient discomfort with this invasive procedure and its limited ability to detect carcinoma in situ of the bladder.<sup>24</sup>

#### Follow-up

There has been some debate about the recommended follow-up for patients with idiopathic microscopic hematuria. An acceptable approach would include repeat urinalysis with urine cytology every six months and repeated cystoscopy every year.<sup>6</sup> This is especially important for persons older than 40 years and younger persons who have risk factors for urothelial cancer (i.e., smoking history, occupational exposure to benzenes or aromatic amines [e.g., leather dye, rubber, tire industries], or history of urologic neoplasm).

## Hematuria

Understanding the strengths and weaknesses of each radiographic modality with data from the history and physical examination can help family physicians select the most appropriate starting point for evaluation of the upper urinary tract. Urine cytology studies alone may provide sufficient evaluation of the lower urinary tract in certain low-risk patients. It should be emphasized that patients older than 40 years and those who have identifiable risk factors for urothelial neoplasms merit referral to a urology subspecialist for cystoscopy.

Members of various family medicine departments develop articles for "Radiologic Decision Making." This article is one in a series coordinated by Mark Myers, M.D., University of Kansas Medical Center, Kansas City, and Walter Forred, M.D., University of Missouri-Kansas City School of Medicine, Kansas City.

### The Authors

MARY M. MCDONALD, M.D., is assistant professor in the Department of Family Medicine at the University of Kansas School of Medicine, Kansas City. She received her medical degree from the University of Kansas School of Medicine, where she also completed a family medicine residency and a geriatric medicine fellowship.

DANIEL SWAGERTY, M.D., M.P.H., is associate professor in the Departments of Family Medicine and Internal Medicine, and is associate director of the Center on Aging at the University of Kansas School of Medicine. He received his medical degree from the University of Kansas School of Medicine, where he also completed a family medicine residency and a geriatric medicine fellowship.

LOUIS WETZEL, M.D., is professor in the Department of Radiology at the University of Kansas School of Medicine. He received his medical degree from the University of Kansas School of Medicine, where he also completed a radiology residency. Dr. Wetzel completed a fellowship in imaging at the University of California Hospitals, San Francisco.

Address correspondence to Daniel Swagerty, M.D., M.P.H., University of Kansas School of Medicine, Center on Aging, 3599 Rainbow Blvd., Kansas City, KS 66160-7117 (e-mail: dswagert@kumc.edu). Reprints are not available from the authors.

Author disclosure: Nothing to disclose.

### REFERENCES

1. Grossfeld GD, Wolf JS Jr, Litwan MS, Hricak H, Shuler CL, Agerter DC, et al. Asymptomatic microscopic hematuria in adults: summary of the AUA best practice policy recommendations. *Am Fam Physician* 2001; 63:1145-54.
2. Cohen RA, Brown RS. Clinical practice. Microscopic hematuria. *N Engl J Med* 2003;348:2330-8.
3. Sokolovsky MC. Hematuria. *Emerg Med Clin North Am* 2001;19:621-32.
4. Sultana SR, Goodman CM, Byrne DJ, Baxby K. Microscopic haematuria: urological investigation using a standard protocol. *Br J Urol* 1996;78: 691-8.
5. Khadra MH, Pickard RS, Charlton M, Powell PH, Neal DE. A prospective analysis of 1,930 patients with hematuria to evaluate current diagnostic practice. *J Urol* 2000;163:524-7.
6. Sutton JM. Evaluation of hematuria in adults. *JAMA* 1990;263:2475-80.
7. Mazhari R, Kimmel PL. Hematuria: an algorithmic approach to finding the cause. *Cleve Clin J Med* 2002;69:870,872-4,876.
8. Harper M, Arya M, Hamid R, Patel HR. Haematuria: a streamlined approach to management. *Hosp Med* 2001;62:696-8.
9. Feld LG, Waz WR, Perez LM, Joseph DB. Hematuria. An integrated medical and surgical approach. *Pediatr Clin North Am* 1997;44:1191-210.
10. Bard RH. The significance of asymptomatic microhematuria in women and its economic implications. A ten-year study. *Arch Intern Med* 1988;148:2629-32.
11. Greene LF, O'Shaughnessy EJ Jr, Hendricks ED. Study of five hundred patients with asymptomatic microhematuria. *J Am Med Assoc* 1956;161:610-3.
12. Carson CC III, Segura JW, Greene LF. Clinical importance of microhematuria. *JAMA* 1979;241:149-50.
13. Davides KC, King LM, Jacobs D. Management of microscopic hematuria: twenty-year experience with 150 cases in a community hospital. *Urology* 1986;28:453-5.
14. Ritchie CD, Bevan EA, Collier SJ. Importance of occult haematuria found at screening. *Br Med J (Clin Res Ed)* 1986;292:681-3.
15. Tomson C, Porter T. Asymptomatic microscopic or dipstick haematuria in adults: which investigations for which patients? A review of the evidence. *BJU Int* 2002;90:185-98.
16. Woolhandler S, Pels RJ, Bor DH, Himmelstein DU, Lawrence RS. Dipstick urinalysis screening of asymptomatic adults for urinary tract disorders. I. Hematuria and proteinuria. *JAMA* 1989;262:1214-9.
17. Arm JP, Peile EB, Rainford DJ, Strike PW, Tettmar RE. Significance of dipstick haematuria. 1. Correlation with microscopy of the urine. *Br J Urol* 1986;58:211-7.
18. Vallancien G, Cadranet J, Jardin A. What should be done in the presence of isolated microscopic hematuria in man in the work environment? [French] *Presse Med* 1985;14:1279-81.
19. Mariani AJ, Luangphinit S, Loo S, Scottolini A, Hodges CV. Dipstick chemical urinalysis: an accurate cost-effective screening test. *J Urol* 1984;132:64-6.
20. Jaffe JS, Ginsberg PC, Gill R, Harkaway RC. A new diagnostic algorithm for the evaluation of microscopic hematuria. *Urology* 2001;57:889-94.
21. Gray Sears CL, Ward JF, Sears ST, Puckett MF, Kane CJ, Amling CL. Prospective comparison of computerized tomography and excretory urography in the initial evaluation of asymptomatic microhematuria. *J Urol* 2002;168:2457-60.
22. Jamis-Dow CA, Choyke PL, Jennings SB, Linehan WM, Thakore KN, Walther MM. Small (< or = 3-cm) renal masses: detection with CT versus US and pathologic correlation. *Radiology* 1996;198:785-8.
23. Luchs JS, Katz DS, Lane MJ, Mellinger BC, Lumerman JH, Stillman CA, et al. Utility of hematuria testing in patients with suspected renal colic: correlation with unenhanced helical CT results. *Urology* 2002;59:839-42.
24. Koss LG, Deitch D, Ramanathan R, Sherman AB. Diagnostic value of cytology of voided urine. *Acta Cytol* 1985;29:810-6.