

# Uveitis: The Collaborative Diagnostic Evaluation

LYNN E. HARMAN, MD; CURTIS E. MARGO, MD, MPH; and RICHARD G. ROETZHEIM, MD, MSPH  
*University of South Florida, Morsani College of Medicine, Tampa, Florida*

Uveitis, or inflammation of the uveal tract (i.e., iris, ciliary body, and choroid), results from a heterogeneous collection of disorders of varying etiologies and pathogenic mechanisms. Uveitis is caused by a systemic disease in 30% to 45% of patients. Primary care physicians may be asked to evaluate patients with uveitis when an underlying systemic diagnosis is suspected but not apparent from eye examination or history. If the history, physical examination, and basic laboratory studies do not suggest an underlying cause, serologic tests for syphilis and chest radiography for sarcoidosis and tuberculosis are recommended. Typing for human leukocyte antigen-B27 is appropriate for patients with recurrent anterior uveitis. Because the prevalence of many rheumatologic and infectious diseases is low among persons with uveitis, Lyme serology, antinuclear antibody tests, serum angiotensin-converting enzyme tests, serum lysozyme tests, and tuberculin skin tests can result in false-positive results and are not routinely recommended. Drug-induced uveitis is rare and can occur from days to months after the time of initial exposure. Primary ocular lymphoma should be considered in persons older than 50 years with persistent intermediate or posterior uveitis that does not respond to anti-inflammatory therapy. (*Am Fam Physician*. 2014;90(10):711-716. Copyright © 2014 American Academy of Family Physicians.)

**CME** This clinical content conforms to AAFP criteria for continuing medical education (CME). See CME Quiz Questions on page 696.

Author disclosure: No relevant financial affiliations.

**U**veitis, or inflammation of the uveal tract (i.e., iris, ciliary body, and choroid; *Figure 1*) is caused by a heterogeneous collection of disorders. The clinical diagnosis is often based on spillover inflammation (i.e., cells and protein flare) observed with a slit lamp in the aqueous or vitreous humors. Uveitis is classified according to the predominant site of inflammation: anterior (anterior chamber), intermediate (vitreous), or posterior (retina or choroid).<sup>1</sup> Generalized intraocular inflammation is described as panuveitis, whereas inflammation centered in the optic nerve head with secondary peripapillary involvement is classified under posterior uveitis as neuroretinitis.<sup>1</sup> When spillover inflammation from primary disease of the cornea or sclera occurs, the terms keratouveitis and sclerouveitis, respectively, are applicable. Classifying uveitis according to the predominant site of inflammation can help narrow the differential diagnosis.

Most forms of uveitis not caused by accidental or surgical trauma are manifestations of infectious or immune-mediated disease. Approximately 30% to 45% of patients with uveitis have a causally associated systemic

disease.<sup>2,3</sup> Topical and systemic medications can cause secondary uveitis. This review provides a framework for primary care physicians who are asked to examine patients with uveitis when an underlying systemic diagnosis is suspected after ophthalmologic evaluation.

## Epidemiology

The annual incidence of uveitis in North America ranges from 17 to 52 per 100,000 persons, and the prevalence ranges from 58 to 115 per 100,000 persons.<sup>4-7</sup> Up to 35% of patients with uveitis have severe visual impairment, and roughly 10% are legally blind.<sup>8</sup> Uveitis can occur at any age, but the peak incidence is between 20 and 59 years of age. Systemic diseases most often associated with uveitis in North America are the seronegative spondyloarthropathies, sarcoidosis, syphilis, rheumatoid arthritis, and reactive arthritis.<sup>4-7</sup>

*Table 1* lists the main systemic disorders associated with uveitis, typical clinical findings, and suggested diagnostic studies.<sup>9,10</sup> Anatomic classification of inflammation is helpful in reducing diagnostic possibilities, but the guidance it provides is limited.

## SORT: KEY RECOMMENDATIONS FOR PRACTICE

Clinical recommendation	Evidence rating	References
If the history, physical examination, and basic laboratory tests do not uncover a cause for uveitis, serologic tests for syphilis and chest radiography for sarcoidosis and tuberculosis are recommended.	C	11, 12, 15
Adults who have a single episode of mild anterior uveitis that responds to treatment and who have no systemic signs or symptoms do not need further laboratory studies.	C	11, 13
Routine radiography and serologic studies are not indicated for all patients with uveitis.	C	13-15
Drug-induced uveitis should be considered in patients with unexplained uveitis beginning days to months after starting a new medication.	C	17-19
Primary ocular lymphoma should be considered in patients older than 50 years with persistent unexplained intermediate or posterior uveitis that is unresponsive to anti-inflammatory therapy.	C	20

A = consistent, good-quality patient-oriented evidence; B = inconsistent or limited-quality patient-oriented evidence; C = consensus, disease-oriented evidence, usual practice, expert opinion, or case series. For information about the SORT evidence rating system, go to <http://www.aafp.org/afpsort>.

Disorders like the seronegative spondyloarthropathies and juvenile idiopathic uveitis usually involve the anterior segment of the eye, but other conditions like Behçet syndrome, syphilis, and sarcoidosis can affect any location.

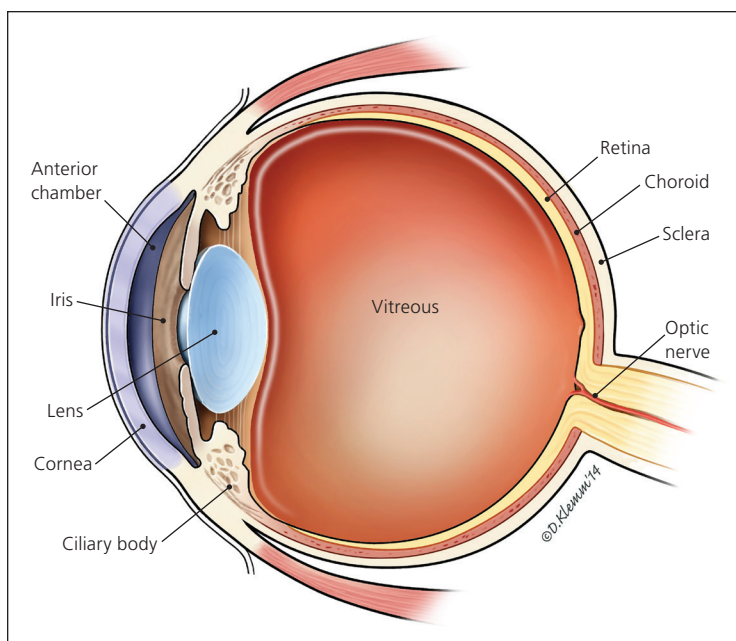
### Clinical Presentation

Symptoms of uveitis are nonspecific, consisting of various combinations of blurred or reduced vision, visual floaters, eye discomfort or pain, and intolerance to light. Secondary headache or brow ache is common. Occasionally, a patient has no symptoms to report, which is more common in children. The onset of uveitis can be sudden or insidious. The clinical distinction between acute and chronic uveitis has been arbitrarily set at three months. Recurrent uveitis is defined as repeat episodes occurring after three months of disease inactivity without treatment.<sup>1</sup>

Most eyes with anterior uveitis display conjunctival injection, often associated with a blush of limbal vessels. The iris may be difficult to visualize clearly because of corneal edema or cells and protein suspended in the aqueous. Pupils may react poorly to light if the iris has become adherent to the anterior lens capsule (*Figure 2*). Occasionally, large clumps of inflammatory cells can be seen on the back surface of the cornea (*Figure 3*). When inflammation is severe, white blood cells settle in the anterior chamber forming a white interface with the overlying aqueous, a condition referred to as hypopyon (*Figure 4*). Children with juvenile idiopathic arthritis and anterior uveitis tend to have deceptively quiet eyes despite considerable inflammation internally. Intermediate and posterior uveitis can present with little or no evidence of inflammation on the surface of the eye. The accumulation of inflammatory cells and protein flare in the vitreous prevents clear inspection of the retina, as if the view is obscured by fog (*Figure 5*). Although inflammatory cells suspended in the aqueous or vitreous humors are the diagnostic hallmark of uveitis, they require brightly focused illumination and slit lamp magnification for visualization.

### Diagnostic Approach

There is no universally accepted approach to the evaluation of uveitis.<sup>3,11,12</sup> If the history, physical examination, and basic laboratory tests do not suggest a specific diagnosis, serologic studies for syphilis and chest radiography for sarcoidosis and tuberculosis are recommended<sup>2,3,11</sup> (*Table 1*<sup>9,10</sup>). Basic laboratory studies include complete blood count with differential, basic metabolic panel, urinalysis, and erythrocyte sedimentation rate. However, adults who have a single episode of mild anterior uveitis that resolves with a short course of topical corticosteroids, and



**Figure 1.** The anatomic layers and chambers of the eye.

**Table 1. Major Systemic Disorders Associated with Uveitis**

<i>Disorder</i>	<i>Site of predominant inflammation</i>	<i>Percentage of patients with uveitis</i>	<i>Systemic findings</i>	<i>Diagnostic studies</i>	<i>Comment</i>
Ankylosing spondylitis	Anterior	40	Sacroiliitis	Radiology studies	Traditional HLA-B27 spondyloarthropathy
Behçet syndrome	Any location	60 to 80	Oral and genital ulcers, erythema nodosum, arthritis, epididymitis, gastrointestinal ulcers	Positive pathergy test, HLA-B51	Rapid onset of ocular symptoms can mimic endogenous infection
Bloodborne infection	Any location	Unknown	Varies with clinical context; persons with indwelling venous catheters and intravenous drug users at high risk	Blood culture	May have no systemic symptoms by the time eye symptoms develop
Cat-scratch disease (bartonellosis)	Neuroretinitis	Unknown	Influenza-like illness, regional lymphadenopathy	Serologic studies for <i>Bartonella henselae</i>	History of cat exposure
Drug-related uveitis	Any location	Rare	Can be associated with inflammation of conjunctiva and sclera	Withdrawal of medication; re-challenge if causation is equivocal and risk/benefit is acceptable	Most definite associations based on challenge/re-challenge test
Granulomatosis with polyangiitis	Usually anterior	Unknown	Sinusitis, pulmonary lesions, glomerulonephritis	c-ANCA serology	Inflammation is usually spillover from scleritis or peripheral keratitis
Immunocompromised state or disorder	Any location	Varies based on underlying disorder	Varies based on type of opportunistic infection	Studies to assess degree of immune dysfunction; studies to identify opportunistic organism	—
Inflammatory bowel disease	Anterior	15 to 55	Diarrhea, oral ulcer, arthritis	Endoscopy	—
Juvenile idiopathic arthritis	Anterior	< 50	Pauciarticular arthritis, fever	93% are ANA positive	5:1 girl-to-boy ratio; ocular inflammation with minimal or no symptoms
Lyme disease	Any location	Unknown	Erythema chronicum migrans, arthritis, other organ involvement possible	ELISA IgM and IgG, followed by Western blot test	Tick exposure history, seasonal variation
Multiple sclerosis	Intermediate	30	Multifocal disease of white matter of brain; chronic remitting and relapsing course	MRI, CSF examination	—
Psoriatic arthritis	Anterior	7	Psoriatic skin lesions, arthritis	—	—
Reactive arthritis	Anterior	7	Sacroiliitis, keratoderma blennorrhagicum, oral-genital ulcers	—	—
Relapsing polychondritis	Anterior	Unknown	Inflammation of cartilaginous tissues	—	Often associated with scleritis, spillover inflammation

*continued*

*ACE = angiotensin-converting enzyme; ANA = antinuclear antibody; c-ANCA = cytoplasmic antineutrophil cytoplasmic antibody; CSF = cerebrospinal fluid; CT = computed tomography; dsDNA = double-stranded DNA; ELISA = enzyme-linked immunosorbent assay; HLA = human leukocyte antigen; IgG = immunoglobulin G; IgM = immunoglobulin M; MRI = magnetic resonance imaging; PPD = purified protein derivative; VDRL = Venereal Disease Research Laboratories.*

**Table 1. Major Systemic Disorders Associated with Uveitis** (continued)

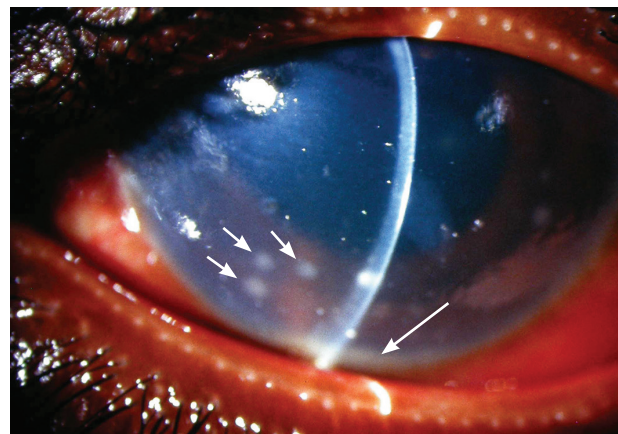
Disorder	Site of predominant inflammation	Percentage of patients with uveitis	Systemic findings	Diagnostic studies	Comment
Rheumatoid arthritis	Usually anterior, spillover from scleritis or peripheral keratitis	< 5	Usually signs of extra-articular disease	Rheumatoid factor	Often associated with scleritis or peripheral keratitis
Sarcoidosis	Any location	Unknown	Varies depending on organ system involved	Chest radiography or CT; serum ACE level	Conjunctival biopsy variable yield but low risk
Syphilis	Any location	< 5	Varies depending on stage and immune status	Syphilis serology; CSF-VDRL test	Nontreponemal and treponemal serologic tests are needed
Systemic lupus erythematosus	Any location	< 1	Skin lesions, renal disease, multiple organ involvement possible	ANA or anti-dsDNA antibodies	—
Toxocariasis	Posterior	Unknown	Isolated eye problem not associated with visceral larvae stage of infection	ELISA titer > 1:8; peripheral eosinophilia occasionally noted	Unilateral; usually occurs before 14 years of age; ova and parasite examination has no value
Tuberculosis	Any location	< 1	Varies depending on immune status	PPD skin test; interferon gamma release assay; chest radiography	Consider if patients traveled where disease is endemic
Tubular interstitial nephritis	Anterior	Unknown	Fever, arthralgias, rash, nephritis	Urinalysis, renal function studies	Ocular symptoms can precede renal disease
Vogt-Koyanagi-Harada syndrome	Posterior	100	Vitiligo, poliosis, alopecia, meningismus, tinnitus	Lumbar puncture for pleocytosis	Probable autoimmune disease; incidence varies worldwide

ACE = angiotensin-converting enzyme; ANA = antinuclear antibody; c-ANCA = cytoplasmic antineutrophil cytoplasmic antibody; CSF = cerebrospinal fluid; CT = computed tomography; dsDNA = double-stranded DNA; ELISA = enzyme-linked immunosorbent assay; HLA = human leukocyte antigen; IgG = immunoglobulin G; IgM = immunoglobulin M; MRI = magnetic resonance imaging; PPD = purified protein derivative; VDRL = Venereal Disease Research Laboratories.

Information from references 9 and 10.

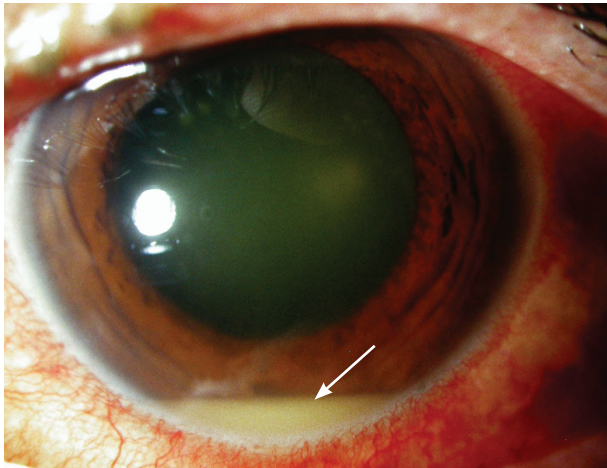


**Figure 2.** Chronic anterior uveitis caused by syphilis. The pupil is small and irregular because the iris is inflamed and adherent to anterior lens capsule.

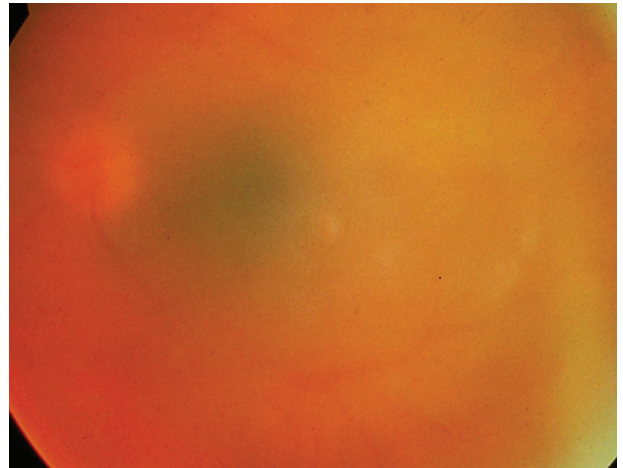


**Figure 3.** Acute anterior uveitis caused by sarcoidosis. The eye is intensely red, and the cornea is hazy. Large clumps of inflammatory cells are visible on the back surface of the cornea (short arrows); a 1-mm hypopyon is present (long arrow).





**Figure 4.** Panuveitis caused by *Klebsiella* sepsis that arose from a urinary tract infection two weeks earlier. The patient had been treated and was feeling better when the eye became painful and red. A 2-mm hypopyon is present (arrow).



**Figure 5.** Intermediate uveitis caused by syphilis. Symptoms of decreased vision and floaters progressively worsened for three weeks. View of the left retina is obscured by the cells and protein exudate within the vitreous. The optic disc is barely visible.

who have no other suggestive clinical history, usually do not require laboratory studies.<sup>13</sup> Typing for human leukocyte antigen-B27 is appropriate for patients with recurrent anterior uveitis, and can be positive in the absence of signs or symptoms of spondylitis. Routine radiology and serologic studies are not indicated for all patients.<sup>13-15</sup> Given the relatively low prevalence of many systemic diseases among persons with uveitis, the positive predictive values for Lyme serology,

antinuclear antibody, serum angiotensin-converting enzyme, serum lysozyme, and tuberculin skin tests are generally too low to order these studies routinely.<sup>14-16</sup>

#### DRUG-INDUCED UVEITIS

Drug-induced uveitis is rare. Symptoms, which overlap those in other forms of uveitis, usually begin days to months after exposure.<sup>17-19</sup> Although some drugs can cause concurrent inflammation of the conjunctiva or

**Table 2. Medications Associated with Uveitis**

Medication	Site of intraocular inflammation	Risk of uveitis	Onset after exposure	Evidence of association
Anti-VEGF, intravitreal	Intermediate in treated eye	1% to 5% of treated eyes	Unknown	Definite
Bisphosphonates	Anterior	< 1%	Days to months	Definite
Brimonidine, topical	Anterior, treated eye	Rare	11 to 15 months	Definite
Cidofovir (Vistide), intravenous	Anterior	17% to 89%	Days to weeks	Definite
Cidofovir, intravitreal	Anterior	26% to 52%	Days to weeks	Definite
Metipranolol (Optipranolol), topical	Anterior, treated eye	Rare	Unknown	Definite
Moxifloxacin (Avelox), oral	Anterior	Rare	1 to 20 days	Probable
Prostaglandin analogues, topical	Anterior, cystic macular edema, treated eye	0.9% to 4.9%	Weeks to months	Definite
Rifabutin (Mycobutin)	Any location	14% to 64%	2 weeks to 7 months	Definite
Sulfonamides	Anterior	Rare	Days to weeks	Definite
Vaccines				
Bacille Calmette-Guérin (tuberculosis)	Any location	Rare	Weeks	Definite
Hepatitis B	Any location	Rare	Days	Probable
Influenza	Any location	Rare	Weeks	Probable
Measles, mumps, rubella	Any location	Rare	Weeks	Probable
Varicella	Anterior, posterior	Rare	Unknown	Possible

VEGF = vascular endothelial growth factor.  
Information from references 17 through 19.

## Uveitis

sclera, drug-induced uveitis essentially mimics infectious and immune-mediated uveitis. For reasons not understood, use of systemic medications can result in unilateral eye involvement. Establishing causal associations can be difficult, and has historically depended on such maneuvers as drug withdrawal and re-challenge.<sup>17</sup> Table 2 lists drugs and vaccines that have been associated with uveitis.<sup>17-19</sup>

### MASQUERADE SYNDROMES AND DIAGNOSTIC CAVEATS

Neoplastic cells may simulate intraocular inflammation. Primary ocular lymphoma should be considered in persons older than 50 years with persistent intermediate or posterior uveitis that does not respond to anti-inflammatory therapy.<sup>20</sup>

Although intermediate and posterior uveitis caused by bloodborne infection usually occur in the context of severe illness, patients can present with endogenous endophthalmitis and not appear acutely ill. Smoldering intraocular infections can develop secondary to transient septicemia from a fungus or low-virulence bacterium after removal of a chronic indwelling venous catheter or after recreational intravenous drug use. Visual symptoms usually develop days or weeks later when persons are afebrile and may otherwise feel well. Another clinical setting in which persons may not feel seriously ill involves *Klebsiella pneumoniae* infection; many of these patients also have diabetes mellitus.<sup>21</sup> Specific serotypes of *Klebsiella* have a predilection to seed the eye, even when primary sites of infection appear under control. Delays in diagnosis have resulted in devastating visual outcomes, including loss of an eye.<sup>22</sup>

**Data Sources:** PubMed was searched using the terms anterior uveitis, intermediate uveitis, posterior uveitis, choroiditis, retinochoroiditis, chorioretinitis, and neuroretinitis. Major textbooks of ophthalmology, infectious disease, and rheumatology were reviewed for relevant source material. The Cochrane Database of Systematic Reviews, the Agency for Healthcare Research and Quality, and the American Academy of Ophthalmology's *Basic and Clinical Sciences Course* books were also searched. Search dates: June and July 2013; September 2013; and July 2014.

### The Authors

LYNN E. HARMAN, MD, is a clinical assistant professor of ophthalmology at the University of South Florida, Morsani College of Medicine in Tampa.

CURTIS E. MARGO, MD, MPH, is a clinical professor of ophthalmology, and pathology and cell biology at the University of South Florida, Morsani College of Medicine.

RICHARD G. ROETZHEIM, MD, MSPH, is a clinical professor of family medicine, and pathology and cell biology at the University of South Florida, Morsani College of Medicine.

Address correspondence to Curtis E. Margo, MD, MPH, University of South Florida, Morsani College of Medicine, 12901 Bruce B. Downs

Blvd., MDC Box 21, Tampa, FL 33612 (e-mail: cmargo@health.usf.edu). Reprints are not available from the authors.

### REFERENCES

1. Jabs DA, Nussenblatt RB, Rosenbaum JT. Standardization of Uveitis Nomenclature (SUN) Working Group. Standardization of uveitis nomenclature for reporting clinical data. Results of the First International Workshop. *Am J Ophthalmol.* 2005;140(3):509-516.
2. Rosenbaum JT. Uveitis. An internist's view. *Arch Intern Med.* 1989;149(5):1173-1176.
3. Smith JR, Coster DJ. Diagnosing the systemic associations of anterior uveitis. *Aust N Z J Ophthalmol.* 1998;26(4):319-326.
4. Wakefield D, Chang JH. Epidemiology of uveitis. *Int Ophthalmol Clin.* 2005;45(2):1-13.
5. Acharya NR, Tham VM, Esterberg E, et al. Incidence and prevalence of uveitis: results from the Pacific Ocular Inflammation Study. *JAMA Ophthalmol.* 2013;131(11):1405-1412.
6. Suhler EB, Lloyd MJ, Choi D, Rosenbaum JT, Austin DF. Incidence and prevalence of uveitis in Veterans Affairs Medical Centers of the Pacific Northwest. *Am J Ophthalmol.* 2008;146(6):890-896.e8.
7. Gritz DC, Wong IG. Incidence and prevalence of uveitis in Northern California; the Northern California Epidemiology of Uveitis Study. *Ophthalmology.* 2004;111(3):491-500.
8. Rothova A, Suttorp-van Schulten MS, Frits Treffers W, Kijlstra A. Causes and frequency of blindness in patients with intraocular inflammatory disease. *Br J Ophthalmol.* 1996;80(4):332-336.
9. Moorthy RS, Rao PK, Read RW, et al. *Intraocular Inflammation and Uveitis.* and Clinical Science Course, 2011-2012. Section 9. San Francisco, Calif.: American Academy of Ophthalmology; 2011.
10. Klippel JH, ed. *Primer on the Rheumatic Diseases.* 13th ed. New York, NY: Springer; 2013.
11. Rosenbaum JT. An algorithm for the systemic evaluation of patients with uveitis: guidelines for the consultant. *Semin Arthritis Rheum.* 1990;19(4):248-257.
12. Rothova A, Buitenhuis HJ, Meenken C, et al. Uveitis and systemic disease. *Br J Ophthalmol.* 1992;76(3):137-141.
13. Noble J, Hollands H, Forooghian F, et al. Evaluating the cost-effectiveness of anterior uveitis investigation by Canadian ophthalmologists. *Can J Ophthalmol.* 2008;43(6):652-657.
14. Rosenbaum JT, Wernick R. The utility of routine screening of patients with uveitis for systemic lupus erythematosus or tuberculosis. A Bayesian analysis. *Arch Ophthalmol.* 1990;108(9):1291-1293.
15. Rosenbaum JT. Focal Points: Practical diagnostic evaluation of uveitis. San Francisco, Calif.: American Academy of Ophthalmology; 1993;XI(6):1-8.
16. Baarsma GS, La Hey E, Glasius E, de Vries J, Kijlstra A. The predictive value of serum angiotensin converting enzyme and lysozyme levels in the diagnosis of ocular sarcoidosis. *Am J Ophthalmol.* 1987;104(3):211-217.
17. London NJ, Garg SJ, Moorthy RS, Cunningham ET. Drug-induced uveitis. *J Ophthalmic Inflamm Infect.* 2013;3(1):43.
18. Fraunfelder FW, Fraunfelder FT. Adverse ocular drug reactions recently identified by the National Registry of Drug-Induced Ocular Side Effects. *Ophthalmology.* 2004;111(7):1275-1279.
19. Ambati J, Wynne KB, Angerame MC, Robinson MR. Anterior uveitis associated with intravenous cidofovir use in patients with cytomegalovirus retinitis. *Br J Ophthalmol.* 1999;83(10):1153-1158.
20. Read RW, Zamir E, Rao NA. Neoplastic masquerade syndromes. *Surv Ophthalmol.* 2002;47(2):81-124.
21. Kashani AH, Elliott D. The emergence of *Klebsiella pneumoniae* endogenous endophthalmitis in the USA: basic and clinical advances. *J Ophthalmic Inflamm Infect.* 2013;3(1):28.
22. Margo CE, Mames RN, Guy JR. Endogenous *Klebsiella* endophthalmitis. Report of two cases and review of the literature. *Ophthalmology.* 1994;101(7):1298-1301.