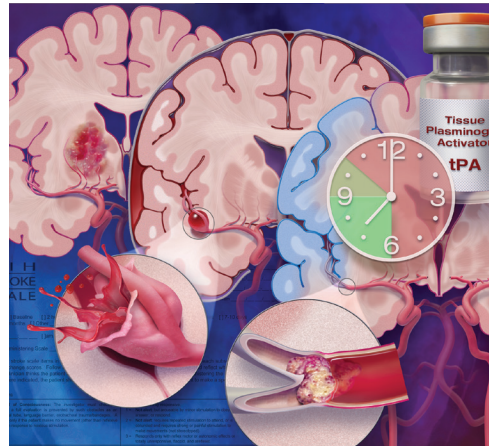


# Diagnosis of Acute Stroke

KENNETH S. YEW, MD, MPH, *Family Medicine of Albemarle, Charlottesville, Virginia*

ERIC M. CHENG, MD, MS, *University of California—Los Angeles, Los Angeles, California*

Stroke can be categorized as ischemic stroke, intracerebral hemorrhage, or subarachnoid hemorrhage. Awakening with or experiencing the abrupt onset of focal neurologic deficits is the hallmark of the diagnosis of ischemic stroke. The most common presenting symptoms of ischemic stroke are speech disturbance and weakness on one-half of the body. The most common conditions that can mimic a stroke are seizure, conversion disorder, migraine headache, and hypoglycemia. Taking a patient history and performing diagnostic studies will usually exclude stroke mimics. Neuroimaging is required to differentiate ischemic stroke from intracerebral hemorrhage, as well as to diagnose entities other than stroke. The choice of neuroimaging depends on availability of the method, the patient's eligibility for thrombolysis, and presence of contraindications. Subarachnoid hemorrhage presents most commonly with sudden onset of a severe headache, and noncontrast head computed tomography is the imaging test of choice. Cerebrospinal fluid inspection for bilirubin is recommended if subarachnoid hemorrhage is suspected in a patient with a normal computed tomography result. Public education about common presenting stroke symptoms may improve patient knowledge and clinical outcomes. (*Am Fam Physician*. 2015;91(8):528-536. Copyright © 2015 American Academy of Family Physicians.)



**CME** This clinical content conforms to AAFP criteria for continuing medical education (CME). See CME Quiz Questions on page 521.

Author disclosure: No relevant financial affiliations.

► **Patient information:** A handout on this topic, written by the authors of this article, is available at <http://www.aafp.org/afp/2015/0415/p528-s1.html>.

**T**he symptoms of acute stroke can be misleading and misinterpreted by clinicians and patients. Family physicians are on the front line to recognize and manage acute cerebrovascular diseases. Rapid, accurate examination of persons with stroke symptoms can reduce disability and help prevent recurrences.

## Classifying Stroke

Stroke can be classified by pathologic process and vascular distribution affected. Defining the overall pathologic process is critical for decisions on thrombolysis, antithrombotic therapy, and prognosis. Hemorrhagic stroke has a higher mortality rate than ischemic stroke.<sup>1</sup> In the United States, 87% of all strokes are ischemic secondary to large-artery atherosclerosis, cardioembolism, small-vessel occlusion, or other and undetermined causes.<sup>1,2</sup> The remaining 13% of strokes are hemorrhagic in intracerebral or subarachnoid locations.<sup>1</sup>

## Risk Factors

Although there are many risk factors for stroke, such as age, family history, diabetes mellitus, chronic kidney disease, and sleep apnea, the major modifiable risk factors include hypertension, atrial fibrillation, smoking, symptomatic carotid artery disease, and sickle cell disease.<sup>1</sup> Physical inactivity; regular consumption of sweetened beverages; and low daily consumption of fish, fruits, or vegetables are also associated with an increased risk of stroke.<sup>1</sup> In women, current use of oral contraceptives, migraine with aura, the immediate postpartum period, and preeclampsia confer small absolute increases in risk of stroke.<sup>1</sup>

## Clinical Diagnosis

### HISTORY AND PHYSICAL EXAMINATION

In a community-based study, primary care physicians practicing in an emergency setting had a 92% sensitivity for diagnosing stroke and transient ischemic attack based on history and examination.<sup>3</sup> The overall reliability of a clinician's diagnosis of stroke

**SORT: KEY RECOMMENDATIONS FOR PRACTICE**

Clinical recommendation	Evidence rating	References
All patients with stroke symptoms should undergo urgent neuroimaging with CT or MRI.	C	9, 37
Patients presenting with acute vestibular syndrome or suspected posterior infarction should undergo acute diffusion-weighted MRI. A negative MRI result should be followed by repeat MRI in three to seven days or bedside oculomotor testing to exclude a false-negative result.	C	18, 37
Lumbar puncture should be performed in persons with suspected subarachnoid hemorrhage and a normal noncontrast head CT result.	C	22, 23
Patients and family members should be educated about stroke symptoms and the need for urgent evaluation.	C	9

CT = computed tomography; MRI = magnetic resonance imaging.

A = consistent, good-quality patient-oriented evidence; B = inconsistent or limited-quality patient-oriented evidence; C = consensus, disease-oriented evidence, usual practice, expert opinion, or case series. For information about the SORT evidence rating system, go to <http://www.aafp.org/afpsort>.

**Table 1. Most Common Symptoms and Signs of Ischemic Stroke**

Symptom or sign	Prevalence (%) <sup>5</sup>	Agreement between examiners (kappa) <sup>4</sup>
<b>Symptoms</b>		
Acute onset	96	Good (0.63) <sup>4</sup>
Subjective arm weakness*	63	Moderate (0.59) <sup>4</sup>
Subjective leg weakness*	54	Moderate (0.59) <sup>4</sup>
Self-reported speech disturbance	53	Good (0.64) <sup>4</sup>
Subjective facial weakness	23	—
Arm paresthesia†	20	Good (0.62) <sup>4</sup>
Leg paresthesia†	17	Good (0.62) <sup>4</sup>
Headache	14	Good (0.65) <sup>4</sup>
Nonorthostatic dizziness	13	—
<b>Signs</b>		
Arm paresis	69	Moderate to excellent (0.42 to 1.00) <sup>4,6</sup>
Leg paresis	61	Fair to excellent (0.40 to 0.84) <sup>4,6</sup>
Dysphasia or dysarthria	57	Moderate to excellent (0.54 to 0.84) <sup>4,6</sup>
Hemiparetic/ataxic gait	53	Excellent (0.91) <sup>6</sup>
Facial paresis	45	Poor to excellent (0.13 to 1.00) <sup>4,6</sup>
Eye movement abnormality	27	Fair to excellent (0.33 to 1.00) <sup>6</sup>
Visual field defect	24	Poor to excellent (0.16 to 0.81) <sup>4,6</sup>

NOTE: Kappa statistic: 0 to 0.20 = poor agreement; 0.21 to 0.40 = fair agreement; 0.41 to 0.60 = moderate agreement; 0.61 to 0.80 = good agreement; 0.81 to 1.00 = excellent agreement.

\*—Noted as loss of power.

†—Noted as loss of sensation.

Adapted with permission from Yew KS, Cheng E. Acute stroke diagnosis. *Am Fam Physician*. 2009;80(1):34, with additional information from references 4 through 6.

is moderate to good, with lower reliability in less experienced or less confident examiners.<sup>4</sup> The most common historical feature of an ischemic stroke is awakening with or acute onset of symptoms, whereas the most common physical findings are unilateral weakness and speech disturbance.<sup>5</sup> The most common and reliable symptoms and signs of ischemic stroke are listed in *Table 1*.<sup>4-7</sup> The most common symptoms and signs of posterior circulation stroke are listed in *Table 2*.<sup>8</sup> *Figure 1* provides an algorithm for stroke diagnosis. A critical piece of information is the time of onset. This value does not assist in diagnosing stroke, but it determines whether a patient meets the 3- or 4.5-hour eligibility windows for thrombolysis among persons with a diagnosis of ischemic stroke.<sup>9</sup>

Physicians managing acute stroke should become familiar with the National Institutes of Health Stroke Scale (NIHSS). The NIHSS is a 15-item scale that can be performed in about five minutes. Although it can help distinguish stroke from stroke mimics,<sup>10</sup> its chief use is to reliably evaluate stroke severity to determine whether tissue plasminogen activator administration is appropriate. It is also used to predict prognosis. Reliable use of the NIHSS requires training,<sup>11</sup> which can produce excellent inter-rater reliability of scoring across physicians and nurses.<sup>12</sup> Free online training is available from the National Stroke Association at <http://www.stroke.org/site/PageServer?pagename=nihs>.<sup>13</sup>

Studies of missed stroke diagnosis have found weakness and fatigue, altered mental status, syncope, altered gait and dizziness, and hypertensive urgency to be the most

**Table 2. Most Common Symptoms and Signs of Posterior Circulation Stroke**

Symptom or sign	Prevalence (%) <sup>a</sup>
<b>Symptoms</b>	
Dizziness	47
Unilateral limb weakness	41
Dysarthria	31
Headache	28
Nausea or vomiting	27
<b>Signs</b>	
Unilateral limb weakness	38
Gait ataxia	31
Unilateral limb ataxia	30
Dysarthria	28
Nystagmus	24

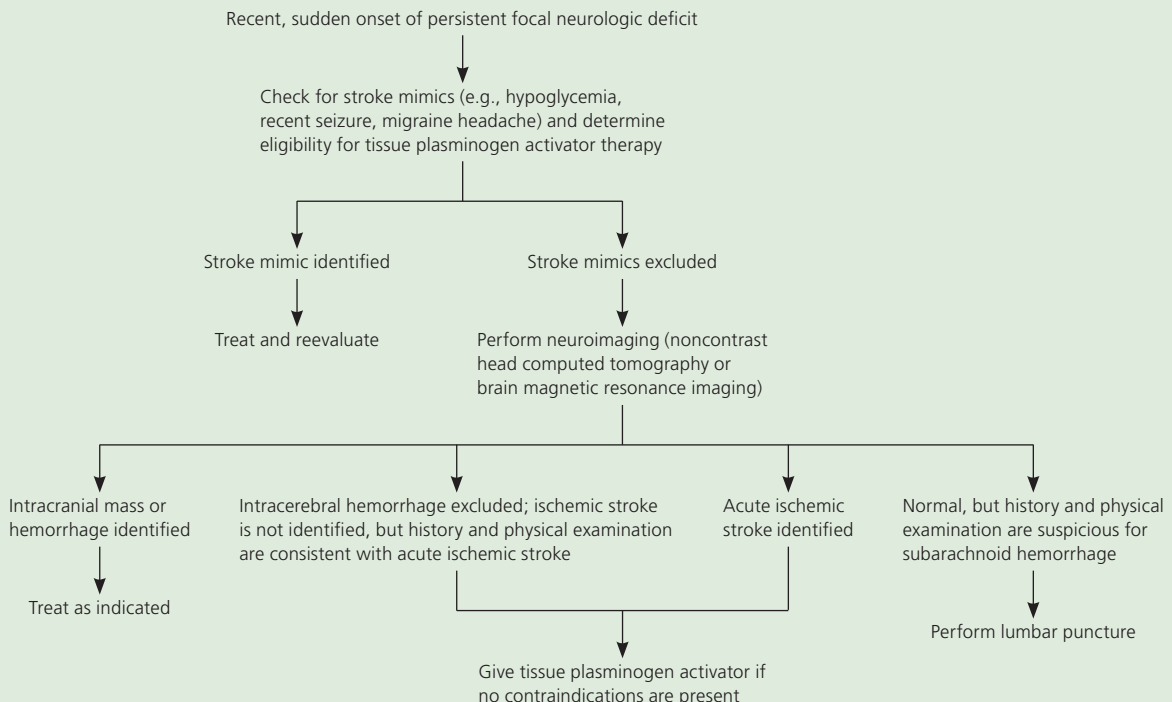
Information from reference 8.

common presenting symptoms in patients admitted for a diagnosis other than stroke who were later confirmed to have had a stroke.<sup>14,15</sup> However, such nonspecific symptoms are not usual presentations of stroke. The history and physical examination for common stroke symptoms should uncover the diagnosis of stroke even in uncommon presentations.

Posterior circulation strokes may be challenging to diagnose. One potential area of confusion is when patients present with dizziness, which is a common concern in general but an uncommon presentation for stroke. In a population-based study of adults older than 44 years presenting to the emergency department or directly admitted to the hospital with a principal concern of dizziness, only 0.7% of patients with isolated dizziness symptoms had an ultimate diagnosis of stroke or transient ischemic attack, although their stroke was missed by the initial examiner 44% of the time.<sup>16</sup>

However, in patients presenting with acute vestibular syndrome<sup>17</sup> defined by one hour or more of acute, persistent, continuous vertigo or dizziness with spontaneous or gaze-evoked nystagmus, plus nausea or vomiting, head motion intolerance, and new gait unsteadiness, one-fourth or more have a posterior circulation stroke.<sup>18,19</sup> As many as two-thirds of patients with acute vestibular syndrome caused by stroke have no obvious neurologic findings.<sup>19</sup> A battery of three bedside tests of eye movement is more sensitive than early magnetic resonance imaging (MRI) for diagnosing posterior stroke in this setting and is highly specific.<sup>18,20</sup> Table 3 describes

### Diagnosis of Acute Stroke



**Figure 1.** Algorithm for the diagnosis of acute stroke.

**Table 3. Bedside Predictors of Stroke and Other Central Etiologies in Patients with Acute Vestibular Syndrome**

Bedside diagnostic predictor	Test description	Sensitivity (95% CI)	Specificity (95% CI)	LR+ (95% CI)	LR- (95% CI)
Normal result on horizontal head impulse test	Turn the patient's head laterally 10 to 20 degrees while observing his or her eyes. A normal result is for the eyes to stay fixed on a target. An abnormal result is for the eyes to rapidly move back to the target once head movement stops. The test also may be performed by turning the patient's head back to center from 10 to 20 degrees off-center. <sup>20</sup>	0.85 (0.79 to 0.91)	0.95 (0.90 to 1.00)	18.39 (6.08 to 55.64)	0.16 (0.11 to 0.23)
Direction-changing nystagmus	Nystagmus in the setting of acute vertiginous syndrome is normally unidirectional, with the fast beat of nystagmus away from the affected side and a slow return toward the affected side. Nystagmus is enhanced when the eye moves toward the side of the fast beat and decreases or disappears when the eye moves toward the side of slow beat. With central lesions, the fast beat of nystagmus may change directions toward the direction the eyes are moving, hence the term "direction-changing nystagmus." <sup>20</sup>	0.38 (0.32 to 0.44)	0.92 (0.86 to 0.98)	4.51 (2.18 to 9.34)	0.68 (0.60 to 0.76)
Skew deviation	Normally during the cover-uncover test there is no eye movement. Upward or downward movement on the cover-uncover test (refixation) indicates skew deviation and is associated with a central lesion. <sup>20</sup>	0.30 (0.22 to 0.39)	0.98 (0.95 to 1.00)	19.66 (2.76 to 140.15)	0.71 (0.63 to 0.80)
HINTS positive	HINTS positive is a normal head impulse test result, direction-changing nystagmus, refixation on cover test (skew deviation), or any combination of these findings. <sup>18</sup>	96.8 (92.4 to 99.0)	98.5 (92.8 to 99.9)	63.9 (9.13 to 446.85)	0.03 (0.01 to 0.09)

NOTE: The analysis included patients with diagnoses other than stroke, including demyelination, brainstem hemorrhage, and other causes comprising a minority of the diagnoses.<sup>18,19</sup>

CI = confidence interval; HINTS = head impulse, nystagmus, test of skew; LR+ = positive likelihood ratio; LR- = negative likelihood ratio.

Information from references 18 through 20.

the conduct and operating characteristics of each test and the battery.<sup>18-20</sup> A video demonstrating these tests is available at <http://content.lib.utah.edu/cdm/singleitem/collection/ehsl-dent/id/6/rec/5>.

Reliably distinguishing between hemorrhagic and ischemic stroke can be done only through neuroimaging. Patients with hemorrhagic stroke are more likely to have headache, vomiting, diastolic blood pressure greater than 110 mm Hg, meningismus, or coma, but none of these findings alone or in combination is reliable enough to ascertain a diagnosis.<sup>21</sup>

Subarachnoid hemorrhage (SAH) presents differently from intracerebral hemorrhage or ischemic stroke. About 80% of patients with aneurysmal SAH report a sudden onset of what they describe as the worst headache of their life.<sup>22</sup> A previous sentinel headache two to eight weeks before aneurysmal rupture is a critical historical finding

present in up to 40% of patients with SAH.<sup>22</sup> Findings accompanying the headache can include vomiting, photophobia, seizures, meningismus, focal neurologic signs, and decreased level of consciousness.<sup>22,23</sup> Funduscopy should be performed because intraocular hemorrhages are present in one in seven patients with aneurysmal SAH.<sup>24</sup> Because the bleeding occurs outside the brain, persons with SAH may not have focal neurologic signs.

#### STROKE MIMICS AND DIFFERENTIAL DIAGNOSIS

Clinicians should consider a broad differential diagnosis when evaluating suspected stroke (*Table 4*<sup>7,9,10,16,19,25-34</sup>). Seizure, conversion or somatoform disorder, migraine headache, and hypoglycemia are the most common stroke mimics.<sup>10,25-30</sup> Checklists to ascertain eligibility for intravenous thrombolysis explicitly include detection of hypoglycemia, hyperglycemia, and recent seizures.

**Table 4. Stroke Mimics and Distinguishing Features**

<i>Condition</i>	<i>Distinguishing features</i>
Seizure	History of loss of consciousness, seizure activity, postictal state, or history of epilepsy usually present <sup>26-31</sup>
Somatoform or conversion disorder	Fluctuations in clinical picture, nonanatomic symptoms or signs or history of mental illness <sup>9,29</sup> Among the most common stroke mimics in patients treated with thrombolysis Reported prevalence of 0.4% to 11.7% <sup>26-31</sup> Younger age and history of psychiatric disease increases the risk <sup>29,30</sup> May coexist with stroke One-third of patients older than 50 years with features of conversion had a coexisting stroke compared with no patients younger than 50 years with that presentation <sup>29</sup>
Migraine headache	History of similar events, preceding aura and headache Common mimic in persons younger than 50 years <sup>29</sup>
Toxic-metabolic disturbances	Hypoglycemia and drug or alcohol intoxication Nonfocal neurologic examination and laboratory results distinguish from stroke <sup>10,25</sup>
Systemic infection	Chest is the most common source <sup>10</sup> Acute illness exacerbating a previous deficit <sup>25</sup>
Syncope/presyncope or hypotension	Hypotension is unusual in acute stroke; prevalence of blood pressure less than 120/80 mm Hg at initial stroke presentation is 7.1% <sup>32</sup> ; symptoms may be transient or respond to hydration
Tumor	Mass noted on neuroimaging
Acute confusional state	May be related to alcohol intoxication, medication adverse effect, or other encephalopathy
Vertigo or dizziness	Prevalence of stroke or transient ischemic attack in adults older than 44 years with isolated dizziness symptoms in emergency setting is 0.7% <sup>16</sup> Stroke prevalence is about 25% in patients presenting with acute vestibular syndrome <sup>19</sup>
Dementia	Presence of known cognitive impairment was one of two factors that independently predicted a stroke mimic in an Australian prospective study of patients admitted with suspected stroke <sup>10</sup>
Headache and neurologic deficits with cerebrospinal fluid lymphocytosis (HaNDL) syndrome <sup>*33</sup>	Second most common diagnosis in a large case series <sup>31</sup> Requires lumbar puncture for diagnosis and initial presentation may mimic stroke <sup>33</sup>
Encephalitis <sup>27</sup>	Fever, signs of infection
Spinal epidural hematoma	Rare, presenting with quadraparesis, paraparesis, or hemiparesis usually in the absence of cranial nerve findings <sup>34</sup> Caused by exercise, trauma, surgery, lumbar puncture, coagulopathy, vascular malformation, or chiropractic spinal manipulation <sup>34</sup> Treatment requires urgent surgical decompression

NOTE: Listed in approximate order of prevalence as a stroke mimic.

\*—HaNDL has a lower prevalence because it has been included as a stroke mimic in only one case series.

Adapted with permission from Yew KS, Cheng E. Acute stroke diagnosis. *Am Fam Physician*. 2009;80(1):36, with additional information from references 9, 10, 16, 19, and 25 through 34.

The rates of misdiagnosis of stroke in studies of consecutive patients not treated with thrombolysis vary from 25% to 31%.<sup>10,25,35</sup> Of patients receiving thrombolysis, 1.4% to 16.7% are found to have a stroke mimic.<sup>26-31</sup> Factors associated with greater risk of a stroke mimic are younger age, lower baseline NIHSS scores, history of cognitive impairment, and nonneurologic abnormal

physical findings.<sup>10,26-31</sup> Patients with a stroke mimic are more likely to present with global aphasia without hemiparesis than patients demonstrated to have a stroke.<sup>26,31</sup>

### Diagnostic Tests and Imaging

Table 5 lists initial diagnostic studies recommended by current guidelines for patients with suspected stroke.<sup>9</sup>

### Table 5. Immediate Diagnostic Studies: Evaluation of a Patient with Suspected Acute Ischemic Stroke

#### All patients

Noncontrast brain CT or brain MRI  
Blood glucose  
Oxygen saturation  
Serum electrolytes/renal function tests\*  
Complete blood count, including platelet count\*  
Markers of cardiac ischemia\*  
Prothrombin time/INR\*  
Activated partial thromboplastin time\*  
ECG\*

#### Selected patients

TT and/or ECT if it is suspected the patient is taking direct thrombin inhibitors or direct factor Xa inhibitors  
Hepatic function tests  
Toxicology screen  
Blood alcohol level  
Pregnancy test  
Arterial blood gas tests (if hypoxemia suspected)  
Chest radiography (if lung disease suspected)  
Lumbar puncture (if subarachnoid hemorrhage is suspected and CT scan is negative for blood)  
Electroencephalogram (if seizures are suspected)

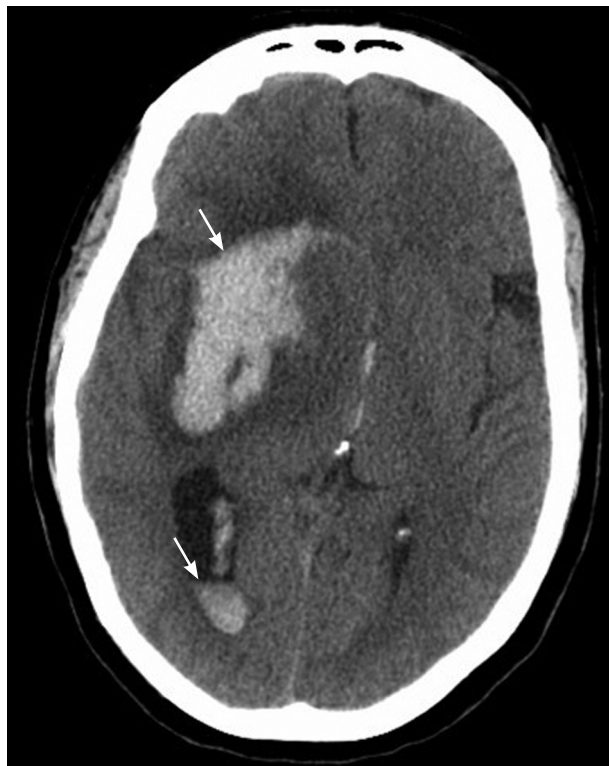
CT = computed tomography; ECG = electrocardiography; ECT = ecarin clotting time; INR = international normalized ratio; MRI = magnetic resonance imaging; TT = thrombin time.

\*—Although it is desirable to know the results of these tests before giving intravenous recombinant tissue-type plasminogen activator, fibrinolytic therapy should not be delayed while awaiting the results unless (1) there is clinical suspicion of a bleeding abnormality or thrombocytopenia, (2) the patient has received heparin or warfarin, or (3) the patient has received other anticoagulants (direct thrombin inhibitors or direct factor Xa inhibitors).

Reprinted with permission from Jauch EC, Saver JL, Adams HP Jr, et al.; American Heart Association Stroke Council; Council on Cardiovascular Nursing; Council on Peripheral Vascular Disease; Council on Clinical Cardiology. Guidelines for the early management of patients with acute ischemic stroke: a guideline for healthcare professionals from the American Heart Association/American Stroke Association. *Stroke*. 2013;44(3):881. <http://stroke.ahajournals.org/content/44/3/870.full>.

The purpose of these studies is to uncover stroke mimics, diagnose critical comorbidities such as myocardial ischemia, and detect contraindications to thrombolytic therapy. No combination of stroke biomarkers has been shown to give additional diagnostic certainty over that of clinical history and examination alone.<sup>36</sup>

All patients with stroke symptoms should undergo urgent neuroimaging with noncontrast computed tomography (CT) or MRI.<sup>9,37</sup> The primary purpose of neuroimaging in a patient with suspected ischemic stroke is to rule out the presence of nonischemic central nervous system lesions and to distinguish between ischemic and hemorrhagic stroke. *Figures 2 and 3* show examples



**Figure 2.** Head computed tomography showing intracerebral hemorrhages (arrows).

Reprinted with permission from Yew KS, Cheng E. *Acute stroke diagnosis*. *Am Fam Physician*. 2009;80(1):38.

of intracerebral and subarachnoid hemorrhages on noncontrast CT.<sup>7</sup> Noncontrast CT is considered sufficiently sensitive for detecting mass lesions, such as a brain mass or abscess, as well as for detecting acute hemorrhage. However, less than two-thirds of strokes are detected by noncontrast CT at three hours postinfarction.<sup>38</sup> Noncontrast CT has even lower sensitivity for small or posterior fossa strokes.<sup>9</sup>

Multimodal MRI sequences, particularly diffusion-weighted images, have better resolution than noncontrast CT, and therefore have a greater sensitivity for detecting acute ischemic stroke.<sup>37,38</sup> MRI sequences (particularly gradient recalled echo and diffusion-weighted sequences) are as sensitive as noncontrast CT for detecting intracerebral hemorrhagic stroke.<sup>9,37,38</sup> *Figure 4* shows the head noncontrast CT and diffusion-weighted MRI of a patient with a previous stroke and a new acute stroke.

MRI has better resolution than noncontrast CT, but noncontrast CT is faster, more available, less expensive, and can be performed in persons with implanted devices (e.g., pacemakers) and in persons with claustrophobia. If a patient is within the time window of intravenous thrombolytic therapy, guidelines recommend that noncontrast CT or MRI be performed to exclude intracerebral hemorrhage and evaluate for ischemic changes.<sup>9</sup> In patients younger than 55 years presenting with stroke-like symptoms, MRI yields a lower rate of

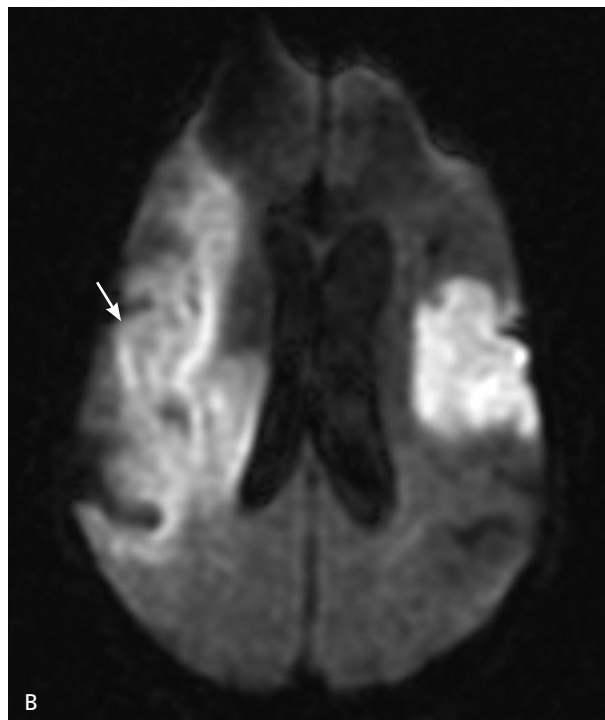


**Figure 3.** Head computed tomography showing subarachnoid hemorrhages (*arrows*). Note that acute hemorrhage appears hyperdense (*white*) on computed tomography.

Reprinted with permission from Yew KS, Cheng E. Acute stroke diagnosis. *Am Fam Physician.* 2009;80(1):38.

misdiagnosis than noncontrast CT because of a lower prevalence of vascular risk factors and a higher prevalence of central nervous system stroke mimics in this age group.<sup>39,40</sup> Patients presenting with acute vestibular syndrome or suspected posterior infarction should undergo acute diffusion-weighted MRI.<sup>37</sup> Because MRI may miss up to 15% of posterior strokes in the first 48 hours,<sup>18</sup> a negative MRI result should be followed by a repeat MRI in three to seven days or bedside oculomotor testing to exclude a false-negative result.

Although acute neuroimaging is essential, it may be possible to efficiently obtain imaging of the carotid arteries to detect carotid stenosis, such as when MRI of the brain is combined with magnetic resonance angiography of the neck. Current guidelines do not address acute imaging of cervical vessels, but it is recommended as part of the subsequent evaluation of patients with confirmed stroke or transient ischemic attack,<sup>9</sup> which is beyond the scope of this article. Acute intracranial vascular imaging is recommended if intravascular therapy is being considered, as long as it does not delay intravenous thrombolysis.<sup>9</sup>



**Figure 4.** (A) Noncontrast computed tomography showing two hypodense regions indicating old infarctions in the distribution of the left-middle cerebral (*long arrow*) and posterior cerebral arteries (*short arrow*). (B) Diffusion-weighted magnetic resonance imaging obtained shortly after the computed tomography reveals a new extensive infarction (*arrow*) in the right-middle cerebral artery distribution not evident on the computed tomography.

Reprinted with permission from MedPix. Retrieved from <http://rad.usuhs.edu/medpix>.

Unlike ischemic stroke and intracerebral hemorrhage, diagnosing SAH requires a different diagnostic approach. The frequency of misdiagnosis of SAH is about 12%.<sup>22</sup> Noncontrast CT is the imaging test of choice for persons with suspected SAH.<sup>22</sup> Noncontrast CT has a sensitivity of nearly 100% for detecting subarachnoid blood in the first 72 hours.<sup>22</sup> The sensitivity of noncontrast CT to detect subarachnoid blood declines over time, whereas MRI remains highly sensitive to intracranial blood for up to 30 days, making it the preferred test for delayed presentations.<sup>22,23</sup>

Persons with suspected SAH and a normal noncontrast CT result should undergo a lumbar puncture to detect bilirubin, a breakdown product of red blood cells in the cerebrospinal fluid.<sup>23</sup> Because red blood cell breakdown can take up to 12 hours, the lumbar puncture should be delayed until 12 hours after the initial onset of symptoms to accurately distinguish SAH from a traumatic tap.<sup>23,41</sup> The yellow color caused by bilirubin, which is called xanthochromia, can be detected by visual inspection or spectrophotometry.<sup>23,41</sup> Spectrophotometry is more sensitive than visual inspection, but is not widely available.<sup>23,41</sup> Bilirubin can be detected up to two weeks after the initial onset of symptoms. If SAH is detected, persons should immediately undergo CT, MRI, or catheter angiography to look for an aneurysm.

### Training Patients to Recognize Stroke Symptoms

Patients and family members should be educated about stroke symptoms and the need for urgent evaluation.<sup>9</sup> Consistent data show considerable room for improvement in stroke knowledge in the general population.<sup>42</sup> However, there are limited data to support the effectiveness of public media campaigns to improve stroke knowledge and to link improved knowledge of stroke symptoms to behavior or clinical outcomes.<sup>43,44</sup> A recent study showed that knowledge of two warning signs of stroke was associated with activation of emergency medical services, which suggests a goal for public education campaigns.<sup>45</sup> The American Stroke Association is promoting the F.A.S.T. (face drooping, arm weakness, speech difficulty, time to call 9-1-1) campaign to improve patient knowledge about stroke and to expedite activation of 9-1-1 services.<sup>46</sup>

**Data Sources:** A PubMed search using a filter for diagnostic studies detailed in the Cochrane Database of Systematic Reviews (Beynon R, Leeflang MM, McDonald S, et al. Search strategies to identify diagnostic accuracy studies in Medline and Embase. *Cochrane Database Syst Rev.* 2013;(9):MR000022) was performed using the MeSH stroke terms stroke; stroke, lacunar; infarction, posterior cerebral artery; brain stem infarctions; infarction, middle cerebral artery; infarction, anterior cerebral artery; anterior spinal artery stroke crossed with sensitivity and

specificity#[MESH] OR diagnos\* OR predict\* OR accura\* with limits of human, English, adult and publication date after June 1, 2008 (the end date of the literature search for the previous AFP article on this topic). Also searched were Essential Evidence Plus, the National Guideline Clearinghouse, the Institute for Clinical Systems Improvement "Diagnosis and Initial Treatment of Ischemic Stroke" guideline, 10th ed., and article bibliographies. Search dates: July 10, 2014, and February 13, 2015.

NOTE: This review updates a previous article on this topic by the authors.<sup>7</sup>

The authors thank Dr. James Smirniotopoulos for assistance with MedPix, and Mrs. Robin Yew for editorial assistance.

The views expressed in this article are those of the authors and do not necessarily reflect the official position of the Department of Defense or the U.S. government.

Dr. Cheng received funding from Cooperative Agreement Award U54 NS08164 from the National Institute of Neurological Disorders and Stroke.

### The Authors

KENNETH S. YEW, MD, MPH, is a retired naval medical officer in private practice at Family Medicine of Albemarle in Charlottesville, Va. He is a clinical assistant professor in the Department of Family Medicine at the Uniformed Services University of the Health Sciences in Bethesda, Md.

ERIC M. CHENG, MD, MS, is an associate professor in the Department of Neurology at the University of California—Los Angeles.

Address correspondence to Kenneth S. Yew, MD, MPH, Family Medicine of Albemarle, 1450 Sagem Place, Suite 201, Charlottesville, VA 22901 (e-mail: kenew@centurylink.net). Reprints are not available from the authors.

### REFERENCES

- Go AS, Mozaffarian D, Roger VL, et al.; American Heart Association Statistics Committee and Stroke Statistics Subcommittee. Heart disease and stroke statistics—2014 update: a report from the American Heart Association. *Circulation.* 2014;129(3):e28-e292.
- Adams HP Jr, Bendixen BH, Kappelle LJ, et al. Classification of subtype of acute ischemic stroke. Definitions for use in a multicenter clinical trial. TOAST. Trial of Org 10172 in Acute Stroke Treatment. *Stroke.* 1993; 24(1):35-41.
- Morgenstern LB, Lisabeth LD, Mecozi AC, et al. A population-based study of acute stroke and TIA diagnosis. *Neurology.* 2004;62(6): 895-900.
- Hand PJ, Haisma JA, Kwan J, et al. Interobserver agreement for the bedside clinical assessment of suspected stroke. *Stroke.* 2006;37(3): 776-780.
- Nor AM, Davis J, Sen B, et al. The Recognition of Stroke in the Emergency Room (ROSIER) scale: development and validation of a stroke recognition instrument. *Lancet Neurol.* 2005;4(11):727-734.
- Goldstein LB, Simel DL. Is this patient having a stroke? *JAMA.* 2005; 293(19):2391-2402.
- Yew KS, Cheng E. Acute stroke diagnosis. *Am Fam Physician.* 2009; 80(1):33-40.
- Searls DE, Pazdera L, Korb E, Vysata O, Caplan LR. Symptoms and signs of posterior circulation ischemia in the New England Medical Center Posterior Circulation Registry. *Arch Neurol.* 2012;69(3):346-351.
- Jauch EC, Saver JL, Adams HP Jr, et al.; American Heart Association Stroke Council; Council on Cardiovascular Nursing; Council on Peripheral Vascular Disease; Council on Clinical Cardiology. Guidelines for the early management of patients with acute ischemic stroke: a guideline



- for healthcare professionals from the American Heart Association/American Stroke Association. *Stroke*. 2013;44(3):870-947.
10. Hand PJ, Kwan J, Lindley RI, Dennis MS, Wardlaw JM. Distinguishing between stroke and mimic at the bedside: the brain attack study. *Stroke*. 2006;37(3):769-775.
  11. Schmölling S, Grond M, Rudolf J, Kiencke P. Training as a prerequisite for reliable use of NIH Stroke Scale. *Stroke*. 1998;29(6):1258-1259.
  12. Josephson SA, Hills NK, Johnston SC. NIH Stroke Scale reliability in ratings from a large sample of clinicians. *Cerebrovasc Dis*. 2006;22(5-6):389-395.
  13. National Stroke Association. NIH Stroke Scale. 2014; NIHSS online education. <http://www.stroke.org/site/PageServer?pagenam=nihs>. Accessed October 21, 2014.
  14. Lever NM, Nyström KV, Schindler JL, Halliday J, Wira C III, Funk M. Missed opportunities for recognition of ischemic stroke in the emergency department. *J Emerg Nurs*. 2013;39(5):434-439.
  15. Dupre CM, Libman R, Dupre SI, Katz JM, Rybinnik I, Kwiatkowski T. Stroke chameleons. *J Stroke Cerebrovasc Dis*. 2014;23(2):374-378.
  16. Kerber KA, Brown DL, Lisabeth LD, Smith MA, Morgenstern LB. Stroke among patients with dizziness, vertigo, and imbalance in the emergency department: a population-based study. *Stroke*. 2006;37(10):2484-2487.
  17. Hotson JR, Baloh RW. Acute vestibular syndrome. *N Engl J Med*. 1998;339(10):680-685.
  18. Newman-Toker DE, Kerber KA, Hsieh YH, et al. HINTS outperforms ABCD2 to screen for stroke in acute continuous vertigo and dizziness. *Acad Emerg Med*. 2013;20(10):986-996.
  19. Tarnutzer AA, Berkowitz AL, Robinson KA, Hsieh YH, Newman-Toker DE. Does my dizzy patient have a stroke? A systematic review of bedside diagnosis in acute vestibular syndrome. *CMAJ*. 2011;183(9):E571-E592.
  20. Newman-Toker DE. 3-Component H.I.N.T.S. battery. <http://content.lib.utah.edu/cdm/singleitem/collection/ehsl-dent/id/6/rec/5>. Accessed July 20, 2014.
  21. Runchey S, McGee S. Does this patient have a hemorrhagic stroke?: clinical findings distinguishing hemorrhagic stroke from ischemic stroke. *JAMA*. 2010;303(22):2280-2286.
  22. Connolly ES Jr, Rabinstein AA, Carhuapoma JR, et al.; American Heart Association Stroke Council; Council on Cardiovascular Radiology and Intervention; Council on Cardiovascular Nursing; Council on Cardiovascular Surgery and Anesthesia; Council on Clinical Cardiology. Guidelines for the management of aneurysmal subarachnoid hemorrhage: a guideline for healthcare professionals from the American Heart Association/American Stroke Association. *Stroke*. 2012;43(6):1711-1737.
  23. Moore SA, Rabinstein AA, Stewart MW, Freeman WD. Recognizing the signs and symptoms of aneurysmal subarachnoid hemorrhage. *Expert Rev Neurother*. 2014;14(7):757-768.
  24. van Gijn J, Kerr RS, Rinkel GJ. Subarachnoid haemorrhage. *Lancet*. 2007;369(9558):306-318.
  25. Hemmen TM, Meyer BC, McClean TL, Lyden PD. Identification of non-ischemic stroke mimics among 411 code strokes at the University of California, San Diego, Stroke Center. *J Stroke Cerebrovasc Dis*. 2008;17(1):23-25.
  26. Förster A, Griebel M, Wolf ME, Szabo K, Hennerici MG, Kern R. How to identify stroke mimics in patients eligible for intravenous thrombolysis? *J Neurol*. 2012;259(7):1347-1353.
  27. Arto V, Putaala J, Strbian D, et al.; Helsinki Stroke Thrombolysis Registry Group. Stroke mimics and intravenous thrombolysis. *Ann Emerg Med*. 2012;59(1):27-32.
  28. Tsigoulis G, Alexandrov AV, Chang J, et al. Safety and outcomes of intravenous thrombolysis in stroke mimics: a 6-year, single-care center study and a pooled analysis of reported series. *Stroke*. 2011;42(6):1771-1774.
  29. Vroomen PC, Buddingh MK, Luijckx GJ, De Keyser J. The incidence of stroke mimics among stroke department admissions in relation to age group. *J Stroke Cerebrovasc Dis*. 2008;17(6):418-422.
  30. Mehta S, Vora N, Edgell RC, et al. Stroke mimics under the drip-and-ship paradigm. *J Stroke Cerebrovasc Dis*. 2014;23(5):844-849.
  31. Guillan M, Alonso-Canovas A, Gonzalez-Valcarcel J, et al. Stroke mimics treated with thrombolysis: further evidence on safety and distinctive clinical features. *Cerebrovasc Dis*. 2012;34(2):115-120.
  32. Qureshi AI, Ezzeddine MA, Nasar A, et al. Prevalence of elevated blood pressure in 563,704 adult patients with stroke presenting to the ED in the United States. *Am J Emerg Med*. 2007;25(1):32-38.
  33. Headache Classification Subcommittee of the International Headache Society. The International Classification of Headache Disorders. 2nd edition. *Cephalalgia*. 2004;24(suppl 1):9-160.
  34. Liou KC, Chen LA, Lin YJ. Cervical spinal epidural hematoma mimics acute ischemic stroke. *Am J Emerg Med*. 2012;30(7):1322.e1-e3.
  35. Merino JG, Luby M, Benson RT, et al. Predictors of acute stroke mimics in 8187 patients referred to a stroke service. *J Stroke Cerebrovasc Dis*. 2013;22(8):e397-e403.
  36. An SA, Kim J, Kim OJ, et al. Limited clinical value of multiple blood markers in the diagnosis of ischemic stroke. *Clin Biochem*. 2013;46(9):710-715.
  37. Wintermark M, Sanelli PC, Albers GW, et al. Imaging recommendations for acute stroke and transient ischemic attack patients: A joint statement by the American Society of Neuroradiology, the American College of Radiology, and the Society of NeuroInterventional Surgery. *AJNR Am J Neuroradiol*. 2013;34(11):E117-E127.
  38. Latchaw RE, Alberts MJ, Lev MH, et al.; American Heart Association Council on Cardiovascular Radiology and Intervention, Stroke Council, and the Interdisciplinary Council on Peripheral Vascular Disease. Recommendations for imaging of acute ischemic stroke: a scientific statement from the American Heart Association. *Stroke*. 2009;40(11):3646-3678.
  39. Ferro JM, Massaro AR, Mas JL. Aetiological diagnosis of ischaemic stroke in young adults. *Lancet Neurol*. 2010;9(11):1085-1096.
  40. Bhattacharya P, Nagaraja N, Rajamani K, Madhavan R, Santhakumar S, Chaturvedi S. Early use of MRI improves diagnostic accuracy in young adults with stroke. *J Neurol Sci*. 2013;324(1-2):62-64.
  41. Cruickshank A, Auld P, Beetham R, et al.; UK NEQAS Specialist Advisory Group for External Quality Assurance of CSF Proteins and Biochemistry. Revised national guidelines for analysis of cerebrospinal fluid for bilirubin in suspected subarachnoid haemorrhage. *Ann Clin Biochem*. 2008;45(pt 3):238-244.
  42. Kleindorfer D, Khoury J, Broderick JP, et al. Temporal trends in public awareness of stroke: warning signs, risk factors, and treatment. *Stroke*. 2009;40(7):2502-2506.
  43. Lecouturier J, Rodgers H, Murtagh MJ, White M, Ford GA, Thomson RG. Systematic review of mass media interventions designed to improve public recognition of stroke symptoms, emergency response and early treatment. *BMC Public Health*. 2010;10:784.
  44. Reeves MJ. Reducing the delay between stroke onset and hospital arrival: is it an achievable goal? *J Am Heart Assoc*. 2012;1(3):e002477.
  45. Mosley I, Nicol M, Donnan G, Thrift AG, Dewey HM. What is stroke symptom knowledge? *Int J Stroke*. 2014;9(1):48-52.
  46. American Heart Association; American Stroke Association. Stroke warning signs and symptoms. [http://strokeassociation.org/STROKEORG/WarningSigns/Stroke-Warning-Signs-and-Symptoms\\_UCM\\_308528\\_SubHomePage.jsp](http://strokeassociation.org/STROKEORG/WarningSigns/Stroke-Warning-Signs-and-Symptoms_UCM_308528_SubHomePage.jsp). Accessed July 24, 2014.