

Physician Recruitment Supplement

JOB OPPORTUNITIES



Advance your primary care career in North Carolina

Choosing a career with **Vidant Medical Group** means joining a physician-led health system at the forefront of evidence-based medicine and patient-centered care.

- We have opportunities for **expansion at 11 Primary Care practices** within our service area
- No matter where you are in our system of care, you'll have access to the resources you need to be successful



Scan the QR code for more details

If you, or a colleague, are interested in primary care opportunities with Vidant, please contact Annalise Bath: (252) 847-6796 | Annalise.Bath@vidanthealth.com

Family Private Practice For Sale or Lease



Humboldt County, California

Practice:

- Modern 7,500 square-foot Family Practice/ Derm office for sale or lease
- 2nd-floor contemporary offices or apartments for physician, staff, patients or guest
- Building has an additional adjoining lot for privacy or any future expansion
- Ample private clinic parking
- Private staff entrances
- The owner is retired B.C. Dermatologist/Primary Care Physician interested in selling or leasing the building.

Equipment:

- 8 completely furnished exam rooms including 3 large surgical suites
- 4 physician/provider offices
- CLIA certified laboratory
- Laser equipment
- Large modern waiting room
- Fully integrated EMR system

Area:

- Nestled in beautiful coastal redwoods of northern California
- Regional airport with nonstop connections to San Francisco, Los Angeles, Denver, Phoenix, Las Vegas, and other metropolitan cities
- Safe and walkable family community
- Near local university Cal Poly Humboldt and College of the Redwoods

For more details please call 707-834-2400
Jack Guccione MD, MPH



Have a career. Have a life.

LIFEPOINT
HEALTH®

LifePoint Health offers unique opportunities for providers to prosper professionally and personally at hospital campuses nationwide. Quality care is our top priority – we give you access to the tools, resources, and support you need to help you care for your patients and grow your business. In addition, we offer competitive compensation packages, which may include a sign-on bonus, student loan reimbursement, and residency stipends.

Join us in Making Communities Healthier.®

For more information, visit
MeetLifePoint.com

Submit your CV for consideration to
LPNT_Provider.Recruitment@lpnt.net

We are an equal opportunity employer. All qualified applicants will receive consideration for employment without regard to race, color, religion, sex, sexual orientation, gender identity, national origin, disability or veteran status



Physician Recruitment Supplement

JOB OPPORTUNITIES

THE FINANCIAL OPPORTUNITY

- Productivity incentives, others have earned in the \$360,000 range. (78% local C.O.L. equivalent of \$460,000 national). Base salary \$240-\$280k, negotiable relocation, loan forgiveness and sign-on support
- Physician owned and run, ownership option

THE PRACTICE ENVIRONMENT

- Flexible schedule 4 days/week, no call or weekends
- Robust, physician-customized Greenway Intergy EMR, highly licensed support staff with experienced nurse practitioners, supportive family culture, extensive in-house lab & x-ray, highly productive workflow for greater satisfaction and income
- In-house internal medicine partner for complicated patients
- PCMH certified
- Floating back-up physician
- Physician-run, thus strong practitioner input aligns goals
- Designated hospitalist for admissions
- Parallel Direct Primary Care practice opportunity
- Locum Tenens opportunity prior to commitment
- Video of practice available by e-mail

THE COMMUNITY ENVIRONMENT

- Mountainous national forest hiking, Appalachian Trail links, destination-grade mountain and road cycling, whitewater, hunting, fishing, recreational lakes, NASCAR 500
- Local university and nationally recognized collegiate sports programs nearby
- Strong performing arts program.
- 60 minutes Birmingham 80 minutes Atlanta airport and the world

REQUIREMENTS

Energetic, industrious board certified in FM, IM, or EM, good English communication skills and interpersonal skills with staff. In good standing with present state medical board and employer. Alabama Licensure eligible



For more information:

Rodney Snead
rvsnead@aol.com
<https://www.caresinfo.com/>

FAMILY MEDICINE OPPORTUNITIES

Lexington Medical Center in West Columbia, S.C. is seeking board-certified or board-eligible Family Practitioners to join our network.

ABOUT LEXINGTON MEDICAL CENTER:

Lexington Medical Center is anchored by a 557-bed, multispecialty hospital located in the Midlands of South Carolina. Our continuous, steady growth is complemented by an impeccable reputation as an employer, community member, and vital resource for physician practices and health care businesses.

Our family medicine physicians and health care professionals provide continuing, comprehensive health care for individuals and families at 20 convenient locations in the Midlands of South Carolina.

COMPREHENSIVE BENEFITS

• DAY 1 BENEFITS INCLUDE:

- Retirement plans with matching percentage
- Health, dental and vision
- Healthcare FSA
- Daycare FSA
- Life, Accident, and Critical Illness Insurance
- Short and Long-term disability
- College Plans
- Relocation assistance
- Annual CME allowance
- Malpractice coverage
- 24/7 Epic EMR support

POSITION HIGHLIGHTS

- Excellent compensation and comprehensive benefits
- Limited call schedule (phone calls only)
- No inpatient call
- Customized marketing materials
- Established reputation within the community to rapidly build your patient panel
- Collegial and supportive environment

FOR MORE INFORMATION CONTACT:

Michelle White, Physician Recruiter
Hollie Harmon, Provider Sourcing Specialist (803) 791-2415
PhysicianRecruitment@lexhealth.org
Visit our website at www.lexmed.com or www.lmcpphysicians.com



Bring passion and purpose back to your medical career

Humana. Primary Care Organization



View career opportunities at
CenterWellCareers.com and
ConvivaCareers.com

Join Family Medicine in Vermont!



You can have it all

at the University of Vermont Medical Center and
the Department of Family Medicine at the Larner College of Medicine

Here, you'll have the best of all worlds — an academic appointment and a university-based practice in a progressive yet rural setting. Experience robust teaching and leadership opportunities and a broad-spectrum Patient-Centered Medical Home supporting rural medicine, obstetrics, sports medicine, behavioral health and beyond. We seek a rich, diverse workforce and encourage everyone to explore our Family Medicine department and the wonderful state of Vermont.

Live in Burlington, VT, a welcoming, four-season family community with thriving local arts, music, food and recreational culture.

Join a dynamic, supportive team committed to patient care, academic growth and professional advancement.

Tailor your journey to your professional expertise and interests.

Enjoy easy access to hiking, biking, skiing, and other outdoor sports.

Quiet, rural living close to the city, just two hours to Montreal, four hours to Boston.

Learn more at Med.UVM.edu/FamilyMedicine or apply at UVMJobs.com

Questions? Contact Alicia Jacobs, MD,
Search Committee Chair at
Alicia.Jacobs@UVMHealth.org



Physician Recruitment Supplement

JOB OPPORTUNITIES

 Carbon Health

Join us on our mission
to make great healthcare
accessible to all.

Carbon Health urgent care and primary
care physician careers — in-clinic and virtual
— are available nationwide.

Learn more and view openings
at carbonhealth.com/careers.



FM/Corp Health Opportunity in KY

New grads encouraged to apply!

A unique non-occupational position is available in
Kentucky for a BE/BC FM or IM/Peds physician.
Provide care at the top of your license and build healthy
relationships with employees and their families with
generous appointment times. You'll enjoy:

- 100% clinical role in on-site primary care office
- average daily patient census of 19
- NO CALL, NO WKNDs; hours M-F, 6:30a-6:30p
- no administrative burden working with insurance
- guaranteed salary, great benefits, engaging culture

Provide Episodic care for acute/chronic illness along
with routine physicals and general PCP duties. The
promotion of wellness information and preventive
health measures is a considerable part of the role.

Contact:

carrie_case@trihealth.com
513 365 2555
trihealth.com



College of
Community
Health Sciences

JOIN OUR TEAM

The College of Community Health Sciences (CCHS) at The University of Alabama, the
nearly 40,000 student flagship of the UA System, seeks candidates for a faculty position:

ASSISTANT/ASSOCIATE PROFESSOR, FAMILY MEDICINE (NON-TENURE, CLINICAL)

Responsibilities include teaching medical students and
residents in clinical training, providing direct patient
care in a rural outpatient/ambulatory primary care
setting, research and scholarly activity, and
administrative tasks typical for a faculty appointment.
The position primarily serves our Livingston, Alabama,
clinic.

Candidates must hold an MD or DO, be Board
eligible/certified in Family Medicine, meet Alabama
medical licensure requirements, and complete state
licensure prior to start date. A track record of teaching
in a medical school/health professions environment
and of scholarship is desirable. Successful candidates
will display a collaborative and entrepreneurial spirit,
desire to work in interprofessional teams, and have
excellent communication skills in written and spoken
English.

Applicants must apply online at The University of Alabama jobs website
<http://facultyjobs.ua.edu>. Attach a CV, letter of interest, and names of
three references with whom you have worked.

THE UNIVERSITY OF ALABAMA*

 University of
Alabama System

Physician Recruitment Supplement

JOB OPPORTUNITIES




Rowan Medicine

GROW WITH US

Rowan Family Medicine is growing and hiring!

We're seeking skilled educators and providers to join our clinical and educational enterprise.

Learn about our available opportunities at go.rowan.edu/FamilyMedicineJobs



PRIMARY CARE PARTNERS
Your Healthcare Destination

Primary Care Partners

Primary Care Partners Inc. has an opening for a Full-Time Physician position. The responsibility of this position is to provide medical care that is personal, continuous, cost-effective, and of high quality.

We offer a competitive compensation package (\$200,000-\$300,000) including salary, production bonus, relocation assistance, sign on bonus and partnership opportunities.

Duties and Responsibilities:

- Provides direct patient care to adults, pediatrics, and newborn patients in the outpatient setting, as well as the possibility of hospital, skilled nursing facilities and nursing home rounds.
- Assesses patient health by interviewing patients; performing physical examinations; obtaining, updating, and studying medical histories in the outpatient setting.
- Determines abnormal conditions by administering or ordering appropriate and resource efficient diagnostic tests. This includes interpreting some results and subsequent patient follow up and notification.
- Documents necessary medical information into the EMR in accordance with coding, billing, COPIC, and Primary Care Partners expectations.
- Performs therapeutic procedures such as: injections, suturing, wound and infection management, fracture care, and GYN procedures.
- Instructs and counsels patients by describing therapeutic regimens.
- Providing normal growth and development information.
- Family planning discussions
- End of life planning
- Providing counseling for emotional and/or mental health problems.
- Promotes overall wellness and health maintenance.
- Provides continuity of care by developing and implementing patient management plans.
- Works with and directs clinical staff on triage, care management, and refill requests.
- Maintains safe and clean working environment by complying with procedures, rules, and regulations.
- Abides by and promotes CDC vaccine schedule for both pediatric and adult populations.

Work Experience:

New resident graduates and experienced physicians welcome.

Education Requirements:

Licensed physician in good standing, board-certified or board-eligible.

We offer excellent benefits including Health, Dental, Vision, Paid Time Off, 401K, Employee Assistance Program, competitive wages, friendly work environment and more. Applications available at www.pcpnj.com. Please send completed applications to Human Resources, P.O. Box 10700, Grand Junction, CO 81502.

URGENT CARE PHYSICIAN OPPORTUNITIES

Emerson Urgent Care Centers – Hudson, Littleton and Maynard, Massachusetts

FAMILY PRACTICE

EMERGENCY MEDICINE

INTERNAL MEDICINE /PEDIATRICS

Highly Competitive Salary
complete benefit package

New State of the Art Facilities
new facilities with latest technology

Part of a Stable Independent Health System

Emerson Hospital serves over 25 communities and towns and over 300,000 individuals

Clinical Affiliations with Top Boston Academic Centers

Massachusetts General Hospital, Brigham and Women's Hospital, Massachusetts Eye and Ear Infirmary, MassGeneral for Children, Tufts Medical Center

Full, Part Time, as well as Moonlighting Opportunities

Several opportunities available for work/life balance

Great New England locations makes these opportunities an ideal choice for physicians looking for suburb living with close proximity to the city, some of the best public and private schools in the state, many area colleges and close to many recreational activities.

For more information please contact:
Diane Forte Willis,
Director of Physician
Recruitment and Relations
978-287-3002, dfortewillis@emersonhosp.org

Emerson Urgent Care

Physician Recruitment Supplement

JOB OPPORTUNITIES

The Fastest Route to a Slower Pace

WestLife Wellness is seeking a full-time physician. Join our team and enjoy all the amenities of Western North Carolina.



WestLife Wellness

WestLifeJobs.com

Great opportunity with potential loan repayment in beautiful Cape Cod, MA!



We are currently seeking a **FULL-TIME OR PART-TIME FAMILY Physician** for Harbor Community Health Center – Hyannis.

Our Family Physician serves as a Primary Care Provider to a panel of patients and is responsible for organizing and managing their care including outpatient visits, communication with patients and referral for specialty care. Our physician also assesses health risks, promotes and provides disease prevention, and practices evidenced-based medicine.

Qualifications: Completion of an accredited residency program, Current MA MD/DO License, Board Certified in Family Practice.

Benefits: Health, Dental, Vision, Life, & Disability insurance, 403b Savings Plan, Generous Paid Time Off (PTO) and Professional Development Stipends.

- Malpractice Insurance covered by the Federal Tort Claims Act (FTCA).
- Harbor Health Services is qualified for Federal and State Loan Repayment Programs.
- Continuing Medical Education Stipend of up to \$2500 and 5 days of leave per year.
- Reimbursement for initial and renewal costs of licenses.
- 25 days of Paid Time Off (PTO) to start, 11 additional paid Holidays
- EPIC EMR in place.

APPLY NOW!

Email CV to jtranford@hhsi.us or go to [HHSI.US/JoinOurTeam](https://www.hhsi.us/JoinOurTeam)

For more information, call **617-533-2342**



Join the University of Florida, College of Medicine, Department of Community Health and Family Medicine

At Community Health and Family Medicine we provide patient-centered outpatient care in a team-based approach where scholarly activities and professional development is encouraged. We have several Clinical Professor positions available in Gainesville, Old Town Florida and more! The positions provide direct patient care to diverse populations in team-based settings working with UF medical students. Our care teams include outstanding nurses, RN health coaches, and pharmacists.

For information about our positions please contact
Sheila Malone, Department HR Manager, diuguid@ufl.edu

NOW HIRING.

FAMILY MEDICINE PHYSICIANS!

The newest member of the UMass Memorial Health system, Harrington serves patients from more than 25 communities across south-central Massachusetts and northeastern Connecticut with a comprehensive array of health care services.

UMass Memorial Health - Harrington is currently hiring Family Medicine Physicians to join our growing multispecialty medical group.

Brimfield, MA | Charlton, MA | Southbridge, MA | Sturbridge, MA



100 South Street
Southbridge MA, 01550
508-765-9771
www.harringtonhospital.org/careers

Physician Recruitment Supplement

JOB OPPORTUNITIES

West Virginia University Charleston Division is seeking a Family Medicine physician for a fulltime academic position for its School of Medicine.

Position is based at Charleston Area Medical Center located in the capital city of Charleston, West Virginia.

Job duties include: provide clinical care and teach medical students and residents in the field of Family Medicine; scholarly activities are highly encouraged and supported.



Job Requirements

- MD, DO degree or foreign equivalent
- Completed residency in Family Medicine
- Eligible for WV Medical License
- Candidates for Assistant Professor rank must be board eligible in Family Medicine
- Candidates for Associate and Full Professor rank must be board certified in Family Medicine
- All qualifications must be met by time of appointment.

Benefits include:

- Excellent benefits package with generous PTO
- Salary commensurate with qualifications and experience
- Vibrant community
- Superb family environment
- Unsurpassed recreational activities
- Outstanding school systems

Send resume to:

Carol.Wamsley@CAMC.org or 304-388-3347

West Virginia University is proud to be an Equal Opportunity employer and is the recipient of an NSF ADVANCE award for gender equity. The University values diversity among its faculty, staff, and students, and invites applications from all qualified applicants regardless of race, ethnicity, color, religion, gender identity, sexual orientation, age, nationality, genetics, disability or Veteran status.

Take a look at Charleston:

<https://www.youtube.com/watch?v=u75oBPY228E>



Gila Valley Clinic is a Rural Health Clinic seeking a family physician to practice Family Medicine in sunny southeastern-Arizona. Providers enjoy a supportive work environment, state-of-the-art facility, scribes, an excellent EHR, and a diverse patient and payor mix. Gila Valley Clinic is a physician-owned practice located in the growing community of Safford, Arizona and vicinity, population 40,000. Physician work schedule is 4 days per week, allowing plenty of time off to enjoy the beautiful area with lots of outdoor opportunities as well as an abundance of community activities to keep children and adults busy. Safford is less than one day's drive to the Grand Canyon, Disneyland, San Diego, and beaches in Mexico. Newly graduated residents are welcome.

Highlights:

- 4-day work week
- Outpatient; inpatient optional
- Supportive, collegial environment with flexibility for personal needs
- 18-20 patients per day
- Partner track available
- Maternity leave and flexibility of part-time to suit your personal needs.
- State-of-the-art facility
- Medical students and residents
- Competitive salary with bonus potential, malpractice, CME, medical, vacation, retirement plan
- Signing bonus, moving expenses

Visit the clinic website to get a feel for the practice: www.gilavalleyclinic.com

To apply please contact Cathy Romero cejromero@gmail.com 928-651-0797



A Life-Changing Career

A career in Family Medicine at Mayo Clinic isn't just rewarding – it's positively life-changing. Whether you're looking for an opportunity at a large medical center, a community-based practice, or an academic practice setting with potential for research and education – Mayo Clinic offers it.

Explore current opportunities at jobs.mayoclinic.org/familymedicine.



We've made it easy for you to see featured jobs from AAFP CareerLink with our exclusive Job Flash™ email.

You'll receive the latest jobs delivered straight to your inbox twice a month.



SCAN TO SUBSCRIBE



Or sign up for our Job Alerts and have any jobs matching your criteria sent straight to your inbox.

Here's how:

1. Search for jobs on AAFP CareerLink.org and apply filters to just view jobs relevant to you.
2. When the jobs populate, enter your email address on the pop-up window.
3. Once completed, you will receive an email asking you to activate the job alert.
4. Click the link to receive emails containing only jobs that match your criteria.

Now you can keep your career moving forward even while you're on the go!

Go to AAFPCareerLink.org to get started.

Physician Recruitment Supplement

JOB OPPORTUNITIES



Medicine the way it should be - REALLY Comprehensive Patient Care Model ~ No RVU/Production Contracts

Family Practice Physician:

Located throughout beautiful Northern Minnesota, Scenic Rivers Health Services is a patient focused not-for-profit organization. Currently, we are seeking Family Practice Physicians at our locations in Cook or Bigfork, MN. Our clinics are conveniently located in Critical Access Hospitals and together we provide a continuum of quality healthcare to our surrounding communities. By providing care in the nursing home, clinic, hospital, and emergency room our physicians play a vital and rewarding role in the communities. It is a rare opportunity to practice full spectrum medicine with a collaborative team of physicians and still have time to interact with your patients.

• Scheduling:

- Work weeks are 1 call shift and 3 clinic shifts making a 4-day work week
- Clinic shifts are 6 hours of patient contact, leaving up to 2 hours administrative time
- **45-minute physicals/pre-ops, 30-minute acute and chronic disease visits**

• Average Volumes:

- **Clinic: 10-12 patients per day**
- ER: 2,250 annual volume with level IV Trauma Designation

Scenic Rivers Health Services is a Federally Qualified Health Center which enables you to focus on the patient and not production. Clinic schedules and patient appointments are quality focused creating a rewarding practice. Participation in the On-Call schedule is shared with no OB.

Benefits & Support:

- Join a sound and enjoyable team of existing physicians
- **No RVU or Production Requirements**
- **No Restrictive Contracts**
- Competitive sign-on, starting and residency bonuses
- Authentic **\$253,000.00** base Salary
- Competitive paid time off:
 - 20 days vacation
 - 12 days sick
 - 10 days CME
 - 3 personal days
- Full Benefit package including dental and long-term disability
- **Feasible Student Loan Repayment!!**

See us online at: www.scenicrivershealthservices.org ;
www.cookhospital.org ; www.BigforkValley.org

Requirements:

Current or eligible for MN License, DEA certificate, Board Certified in Family Practice, and current life support certification(s). We are an equal opportunity employer. Please send resume and questions about the position to Travis Luedke, General Manager at tluedke@scenicrivershealth.org or call at 218-361-3190.



Salem Health Hospitals and Clinics are seeking Primary Care Providers for our growing team!



We are seeking Family Medicine Physicians to join our growing established Primary care team comprised of over 45 providers across 10 clinics, serving the communities in and around the beautiful Salem, Oregon.

Highlights:

- Base Compensation
- Annual Group Incentive Bonus Program
- Up to \$100k Education Assistance
- Relocation Assistance & Sign-On Bonus
- \$4,000 annual CME allowance + 40 hours for continuing medical education
- Highly competitive benefit package including 200 hours of paid time off
- Growing medical group that has doubled in size in two years
- Live amidst Oregon's Wine Country in the beautiful Willamette Valley
- 1-hour drive to the Pacific Ocean, 1.5-hour drive to Mt. Hood, and a 45-minute drive to the City of Portland

For more information:
Physician.Recruitment@salemhealth.org
or call: (503) 814-1871



Physician Recruitment Supplement

JOB OPPORTUNITIES



Penn Medicine
Lancaster General Health

LIVE YOUR LEGACY

Lancaster General Health Physicians is a network of more than 350 primary-care and specialty physicians and 200-plus advanced-practice practitioners.

We serve patients at locations throughout the region. Our teams take pride in offering the highest quality of care through comprehensive services and advanced technologies-always maintaining a focus on wellness and prevention.

Culture

We integrate practices and policies that encourage diverse perspectives, experiences and cultures by showing an appreciation for the differences in ethnicity, gender, age, national origin, religion, education, disability, and sexual orientation in our workforce. We celebrate the diversity of our community, strive to have our residency reflect the diversity of our patients and community, work to reduce health disparities and eliminate social injustices.

Community

Lancaster is conveniently located within relatively close proximity to several major east coast cities including: Philadelphia, PA, Baltimore, MD, Washington, DC, and New York, NY.

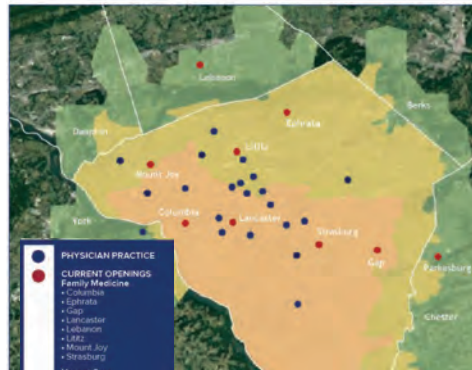
Comprehensive Benefits Package

- Competitive base salary
- Comprehensive health insurance
- Paid professional liability insurance
- Paid days off (vacation, holiday, sick, personal)
- Continuing education
- Optional dental and vision plans
- Retirement plans including 403(b)



Service Areas & Locations

Service Area Population: 934,500
Primary Care Locations: 34



Submit your CV to:
Steven.Capo@pennmedicine.upenn.edu
717-544-7148

For more information on our system and community, please visit LancasterDoctors.org



LIVE YOUR PASSION. LIVE YOUR BEST. LIVE YOUR COMMITMENT.

Equal Opportunity Employer



Penn Medicine
Lancaster General Health

LIVE YOUR LEGACY

Family Medicine Osteopathic Faculty Opening

The Family Medicine Residency Program at Lancaster General Hospital is seeking an Associate Director for the Osteopathic Core Faculty Team. This position will serve as a core teaching faculty physician for the Family Medicine Residency program with a specific focus on Osteopathic practice, principles and curricular development in collaboration with the Director of Osteopathic Education.

The Associate Director will serve as a faculty advisor by conducting formal evaluations, counsel residents, and coordinate research audits of assigned team of residents. As a core faculty member, the incoming Associate Director will serve as an attending physician supervising residents on our Family Medicine Inpatient Service and/or Maternal Child Health Service (Obstetrics) several weeks per year. In addition, the Associate Director would also be expected to maintain a limited practice by providing quality patient care seeing patients from infant to geriatrics at one of Penn Medicine Lancaster General Health's Academic Family Practice Centers.

Qualifications

- Graduate of an accredited School of Medicine (Osteopathic)
- Completion of an accredited Family Medicine Residency
- Possess or able to obtain an unrestricted PA Medical License
- Two years of clinical patient care experience desired
- Two years or more of teaching experience preferred
- Experience with community service, as integrated into the college and medical school experience

Comprehensive Benefits Package

- Competitive base salary
- Comprehensive health insurance
- Paid professional liability insurance
- Paid days off (vacation, holiday, sick, personal)
- Continuing education
- Optional dental and vision plans
- Retirement plans including 403(b)

Culture

We integrate practices and policies that encourage diverse perspectives, experiences and cultures by showing an appreciation for the differences in ethnicity, gender, age, national origin, religion, education, disability, and sexual orientation in our workforce. We celebrate the diversity of our community, strive to have our residency reflect the diversity of our patients and community, work to reduce health disparities and eliminate social injustices.

Community

Lancaster is conveniently located within relatively close proximity to several major east coast cities including: Philadelphia, PA, Baltimore, MD, Washington, DC, and New York, NY.

Submit your CV to:
Steven.Capo@pennmedicine.upenn.edu
717-544-7148

For more information on our system and community, please visit LancasterDoctors.org



Penn Medicine Lancaster General Health is a remarkable place to serve. One where we encourage all employees to Live Their Legacy through the passion of their work, a commitment to serve and a strong desire to be their best.

LIVE YOUR PASSION. LIVE YOUR BEST. LIVE YOUR COMMITMENT.

Equal Opportunity Employer

Physician Recruitment Supplement

JOB OPPORTUNITIES



HSHS Medical Group

A workplace that feels like home.

Be part of a group where you can make a meaningful impact in the community.

Family & Internal Medicine opportunities in Central & Southern Illinois.

Opportunity Highlights:

- Rural and urban locations close to Chicago and St. Louis
- 100% outpatient; flexible schedule
- Patient panel waiting for you
- Allows for great work/life balance
- Enjoy the stability of being part of a large Physician Enterprise with 500+ physicians and providers
- Substantial comp. including generous quality incentives + wRVU production bonus
- Practice in a beautiful new office building
- Pension plan & 403(b) matching retirement
- Housing and student loan assistance

You take care of patients. We take care of the rest.

To learn more about this opportunity, please email Debbie.Brewer@hshs.org
www.HSHSMedicalGroup.org

Family Medicine Faculty

Penn State Health Milton S. Hershey Medical Center

The Department of Family & Community Medicine at Penn State Health Milton S. Hershey Medical Center is currently recruiting family medicine physicians for faculty opportunities in Hershey/Harrisburg, PA.

What We're Offering

- Salary commensurate with qualifications
- Comprehensive benefits package
- Relocation assistance
- We will foster your passion for patient care and cultivate a collaborative environment rich with diversity
- Experienced family medicine colleagues and collaborative leadership

Patty A. Shipton, CPRP - Physician Recruiter
pshipton@pennstatehealth.psu.edu
Phone: 717-531-6282



PennState Health

Penn State Health is fundamentally committed to the diversity of our faculty and staff. We believe diversity is unapologetically expressing itself through every person's perspectives and lived experiences. We are an equal opportunity and affirmative action employer. All qualified applicants will receive consideration for employment without regard to age, color, disability, gender identity or expression, marital status, national or ethnic origin, political affiliation, race, religion, sex (including pregnancy), sexual orientation, veteran status, and family medical or genetic information.



NYZENCENTER

CONTEMPLATIVE MEDICINE FELLOWSHIP

APPLICATIONS ACCEPTED THROUGH JUNE 1ST

Take part in this unique opportunity to restore resilience, well-being, and joy to healthcare.

The NYZC Contemplative Medicine Fellowship is a twelve-month training for physicians, advanced practice registered nurses, and physician assistants who want to lead change in the culture of care.

We invite you to learn more, attend an info session and apply for this groundbreaking program.

ZENCARE.ORG

Join our growing Primary Care Network at ChristianaCare!



Why ChristianaCare?

- Join established and planned practice sites in Delaware, Southeastern Pennsylvania, Northeastern Maryland, and Southern New Jersey
- Treat newborns to geriatric patients while carving out your own clinical interest niche
- Take advantage of an extensive health network that includes outpatient services, home health care, medical aid units, a Level I trauma center, Level III neonatal intensive care unit, a comprehensive stroke center along with regional Centers of Excellence in heart and vascular care, cancer care and women's health.
- Teach residents from ChristianaCare's Family Medicine Residency programs along with medical school and NP students
- Live and work within 1 hour of Philadelphia and Baltimore, 2 hours from New York City and Washington D.C.

To learn more please contact Frank Gallagher, Senior Physician Recruiter at:
Francis.W.Gallagher@christianacare.org

https://careers.christianacare.org/jobs/Primary_Care_Physicians/100/276958/

- NAMED AMONG FORBES BEST EMPLOYER FOR DIVERSITY & INCLUSION IN THE U.S. FOR 2021
- NAMED AMONG FORBES BEST LARGE EMPLOYERS FOR 2021
- PRESIDENT/CEO DR. JANICE MEVIN NAMED AMONG 50 MOST INFLUENTIAL CLINICAL EXECUTIVES IN 2022 BY MODERN HEALTHCARE
- ACHIEVED HEALTHCARE'S 50 BEST HOSPITALS AWARD IN 2021

for the love of health



Physician Recruitment Supplement

JOB OPPORTUNITIES

FREE



LIFE COACHING CME

FOR COMMUNITY-MINDED PHYSICIANS

5
SHORT
VIDEOS
POWERFUL

MY FREE COURSE

WWW.EMILYSHAWMD.COM/MYFREECOURSE

Family Medicine and Family Medicine Faculty | on the Chesapeake Bay of Virginia | Riverside Health System



Experience the lifestyle of living and working on the Peninsula - the Newport News - York County - Williamsburg region, a region surrounded by the Chesapeake Bay and James River. These historic communities offer a temperate climate, low crime rate, top public-schools, access to major cultural and year-round outdoor recreational activities and low cost of living. Offers the lifestyle of living in coastal community while having the big benefits of suburban living!

As our Family Medicine Physician and integral part of Riverside's Primary Care team you will be employed by our established medical group and contribute to the teams in both suburban and more rural locations. Locations include: York County, Newport News, Williamsburg. Join our supportive, established, collaborative teams while seeing a variety of cases.

As our Family Medicine Faculty, you will serve as a Preceptor to the future family medicine physicians training them both OP and IP (at our main flag ship hospital with a closed ICU) in Newport News, VA. Join our established, collaborative team who share a passion for teaching while serving a diversity of patients and a diversity of cases. Generalist experience with clinical interest in Women's Health, Geriatrics, Palliative Care are an added bonus.

- EPIC links all of our OP & IP facilities within the health system
- 6 weeks scheduled PTO
- Competitive compensation package, retention bonuses and complete benefit package including paid malpractice, health, dental, generous CME, disability and many other perks including pet insurance!
- Sign on bonus, relocation,
- Full practice support with APPs in the practice

To apply for our medical group (RMG) please send your CV directly to:
Nicole.laroche@rivhs.com
Feel free to call us (757) 224-4990

Why Join Riverside?

Our established team fosters a culture guided by a mission to "care for others as we would care for those we love" and mutual respect and collaboration amongst team members within our large multi-specialty group, 600+ Providers, Riverside Medical Group (RMG). A quality driven, multi-specialty clinical team at the heart of one of America's strongest healthcare delivery organizations, Riverside Health System (RHS). All Riverside divisions is represented by physician leaders partnered directly with top administrators that can affect change more easily and an open management style where your input is recognized and valued. RHS has demonstrated that it is well prepared to help face the challenging issues within healthcare. It is over 100 years old yet innovative in its approach with recognized strength in neurosciences, cardiac, orthopedic care, elder care, rehabilitation, home-based technologies, wellness, and mental health support.

Find Robust Patient Volume in Western Kentucky

- Guaranteed base compensation for 2 years
- RVU bonus potential
- \$35,000 Upfront bonus
- \$100,000 student loan forgiveness
- Six weeks paid time off
- Referral base in 18-county service area with a population of 500,000+
- Traditional outpatient/inpatient available
- Collegial culture and work/life balance

OwensboroHealth.org/Opportunities

Physician Opportunities Rural Primary Care



Owensboro Health

OWENSBORO
Henderson
Madisonville
Greenville
Leitchfield

KENTUCKY



Your Dream Opportunity is Waiting

AAFP CareerLink is the go-to resource for connecting family medicine talent with in-demand career opportunities. Make it easier for employers to find you—and you to find your dream job—with features like these:

- Search through thousands of jobs using personalized criteria
- Create custom alerts for your ideal opportunities
- Access tips on negotiating contracts plus free CV reviews

Start your search today.



STP20011876



Visit [AAFPcareerlink.org](https://www.aafpcareerlink.org)

Physician Recruitment Supplement

ADVERTISING

Thinking About Making a Job Change? Here's How to Get Started

Whether you are completing your fellowship or are an experienced physician considering making a change, here are a few tips that can help you get started on what initially might seem like a daunting exercise.

First, carefully consider what is most important to you about your next opportunity.

Location

- **Family, friends, or other connections** – Particularly if you are considering relocating for a job, consider what support system you might need or want to have in place as you transition to a new area. And of course, if you have family who will be relocating with you, consider their wants and needs when narrowing your list of desired areas to work.
- **Urban/suburban/rural** – Within the regions or states you're focused on, consider whether you want to live and/or work in a larger city or a smaller town. Although there are smaller populations in rural areas, the demand for physicians and corresponding pay are often higher.
- **Cost of living** – Along with typically higher salary offers in rural areas, the cost of living is often lower. So you may be able to stretch your income much further if you are open to living in a location that may have fewer amenities within walking distance or a short drive. Several free cost-of-living calculators are available online, including www.bestplaces.net/cost-of-living.
- **School systems** – If you have school-age children or are planning to have children, research the school systems in the areas where you may want to relocate. Free resources are available such as that state's Department of Education website, the local PTA, or the American School Directory (www.asd.com). Paid sites such as www.SchoolMatch.com may provide more in-depth analysis for a small fee.
- **Climate and other environmental factors such as mountains, beaches, attractions, or historical sites** – Having regular access to the things that you enjoy in your free time can help you to be at your best during your workday.

Type of practice

- **Academic/hospital setting vs. outpatient/private practice** – A hospitalist or urgent care role might pay a little more and offer a wider variety of patient care, but for some, the ability to really get to know your patients in an outpatient setting is equally rewarding.
- **Administrative or non-traditional** – Perhaps you would like to explore opportunities outside of a clinical practice. Administrative roles in academic institutions or hospitals, or even roles with pharmaceutical companies, medical device, or consulting companies might be of interest to you.
- **Size of practice** – A smaller practice may offer the ability to form strong connections and continuity of care with patients you see regularly as well as a more consistent, collegial environment with colleagues. But a larger practice may offer less on-call or weekend coverage responsibilities and provide more support, particularly for a newer physician.

Schedule

- **Work-life balance** – Are you looking for a locum tenens, part-time (.6 or .8 full-time equivalent), or full-time role? Due to the demand for talent, some practices or systems are open to being flexible with schedules to attract physicians who might be looking to create a better work-life balance.

Now that you have narrowed your focus to the types of opportunities that best suit you, it's time to broaden your exploration into the channels available for identifying those opportunities.

Referrals/Networking

Recommendations from peers have historically been the top source of job opportunities for physicians and continue to be the most frequently utilized. So don't be afraid to leverage your network to gauge who is happy with their current work situation. If you are completing a residency, consult with your residency program staff. They may be able to help make some connections for you.

Societies/Associations/Journals

As a member of AAFP, you have access to CareerLink and all the job postings of the employers who advertise on the career center. Journals such as *American Family Physician* and *FPM* give readers the ability to view opportunities in each issue's classified advertising section. If you can attend FMX, that is another great opportunity to network with potential employers and let them get to know you beyond your CV.

Search firms/Placement services

Recruitment firms are the second leading source of new opportunities for physicians, and they can help provide support beyond identifying potential jobs. They can leverage their relationships to move your CV to the top of the pile, help you 'tell your story' more effectively, and advise on other strategies to get you noticed. They can provide interview coaching and feedback on your CV as well as offer negotiation support. Be selective when choosing a firm to work with; make sure they are reputable and will only present you to employers after getting your permission. You need to remain in control of your search, even when utilizing the services of a recruitment firm.

Online job boards

Large job boards such as wwwIndeed.com aggregate a tremendous number of job opportunities, but sifting through them can be time consuming. Smaller niche sites might not have as much volume, but the opportunities you'll find there should be more relevant. Before leaving a job board site, be sure to create an email alert to receive new job posting notifications. This way, you won't have to visit each site daily to make sure you don't miss out on a great opportunity.