

# AAFP National Research Network

Jennifer K. Carroll, MD, MPH  
Director, AAFP NRN

# Mission

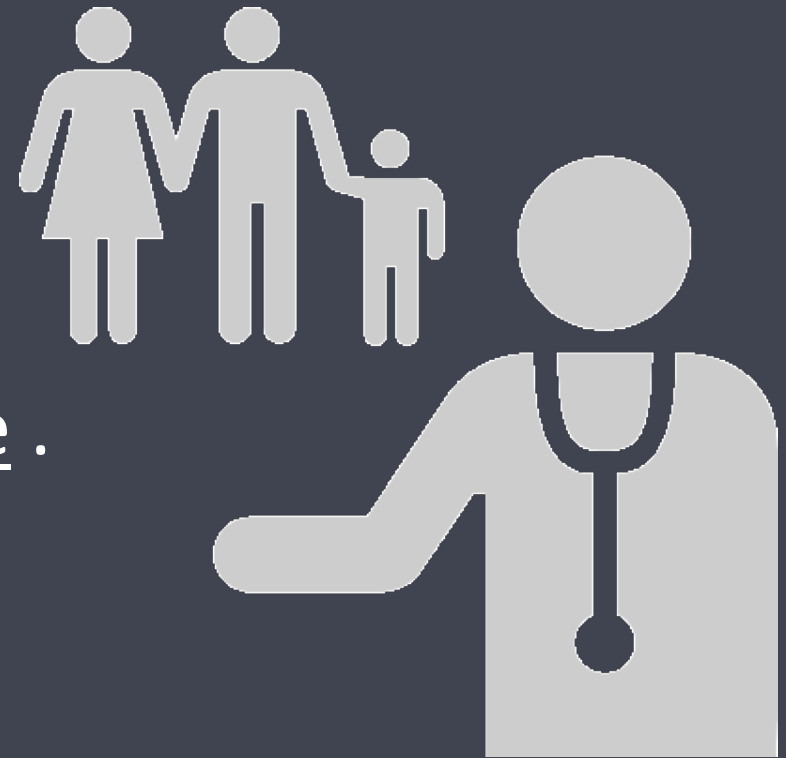
To Cultivate, conduct and disseminate primary care research that improves health of patients, families and their communities.

## Vision

All family physicians engaged to advance knowledge and promote optimal primary health care for all.

# What is practice-based research in family medicine?

- Promoting Primary Care
- Research Video. Click [here](#) .



# Why is family medicine research so important?

Q1. How many office visits were there to family physicians in 2016?

Answer: 928.6 million office visits to physicians of which 54.6% were to primary care physicians

# Why is family medicine research so important?

Q2. What % of the NIH budget goes toward family medicine research?

Answer: 0.2%

### Q3. What % of the NIH budget goes toward family medicine research?

.5

1%

11

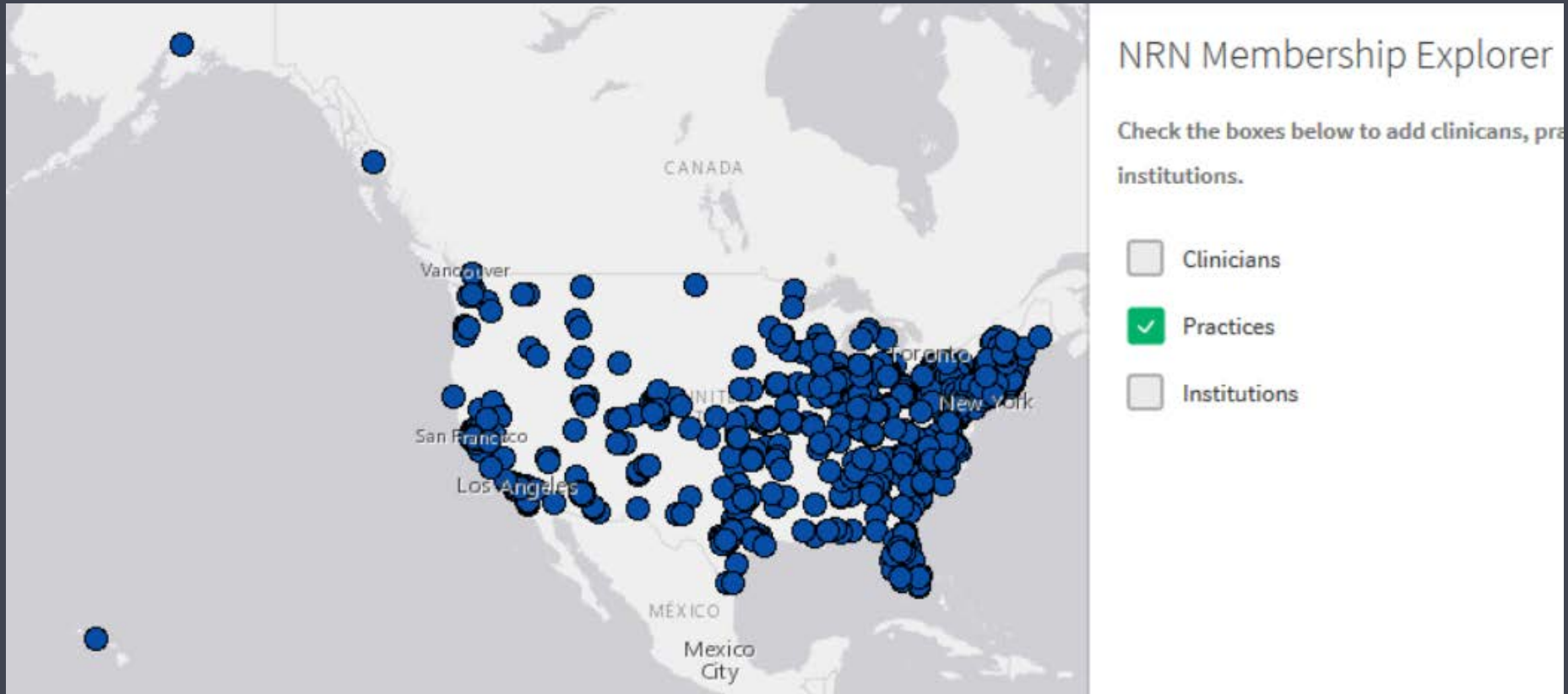
8%

5

6



# NRN member practices





# Achievements and Milestones

Since its inception in December 1999, the AAFP NRN has received over 110 grants and cooperative agreements totaling over \$29 million.

The AAFP NRN has over 110 publications  
<http://www.aafp.org/nrn-publications>.

AAFP NRN is one of eight collaborative institutions awarded AHRQ P30 Center of Excellence. NRN is the core center for 13 + research networks.

# Guiding Principles

- Whole person care
- Primary care includes population/  
community health
- Respect, collaboration
- Primary care access is seamless and easy to navigate for patients
- Promote health equity
- Study ways for primary care to be more efficient

# Who we are

FTEs of staff/faculty/PIs and where located

Project and team structure size range

Partnering institutions

Study types (designs)

Study sizes (range)

# active studies

# Snapshot of current, planned, pending projects



# Cognitive Impairment in Older Adults:

Practical Tools and Resources for Early Detection,  
Management, and Support

Goal: provide primary care clinicians with a consensus-based, effective and practical platform of currently existing tools and evidence to screen, assess, diagnose, and effectively manage older adults with or at risk for cognitive decline and dementia

*Funded by Eli Lilly and Company*

# Cognitive Care Kit Project

- Recruited ten Family Physicians with high engagement in cognitive issues in older adults
- FPs identified and prioritized tools and resources for dissemination through an effective platform for use in practice

# Toolkit

- Link to toolkit: <http://aafpcognitivecarekit.info/>
- Divided into topical sections
- Includes recommended tools and resources for physicians
- Also includes resources for the patients, families and caregivers

# 5 over-arching priorities

1. Practice transformation
2. Team-based care/new care models
3. Electronic health records & health information technology
4. Cost reform and new payment models
5. Population health



# Research priority areas

Value  
relevance

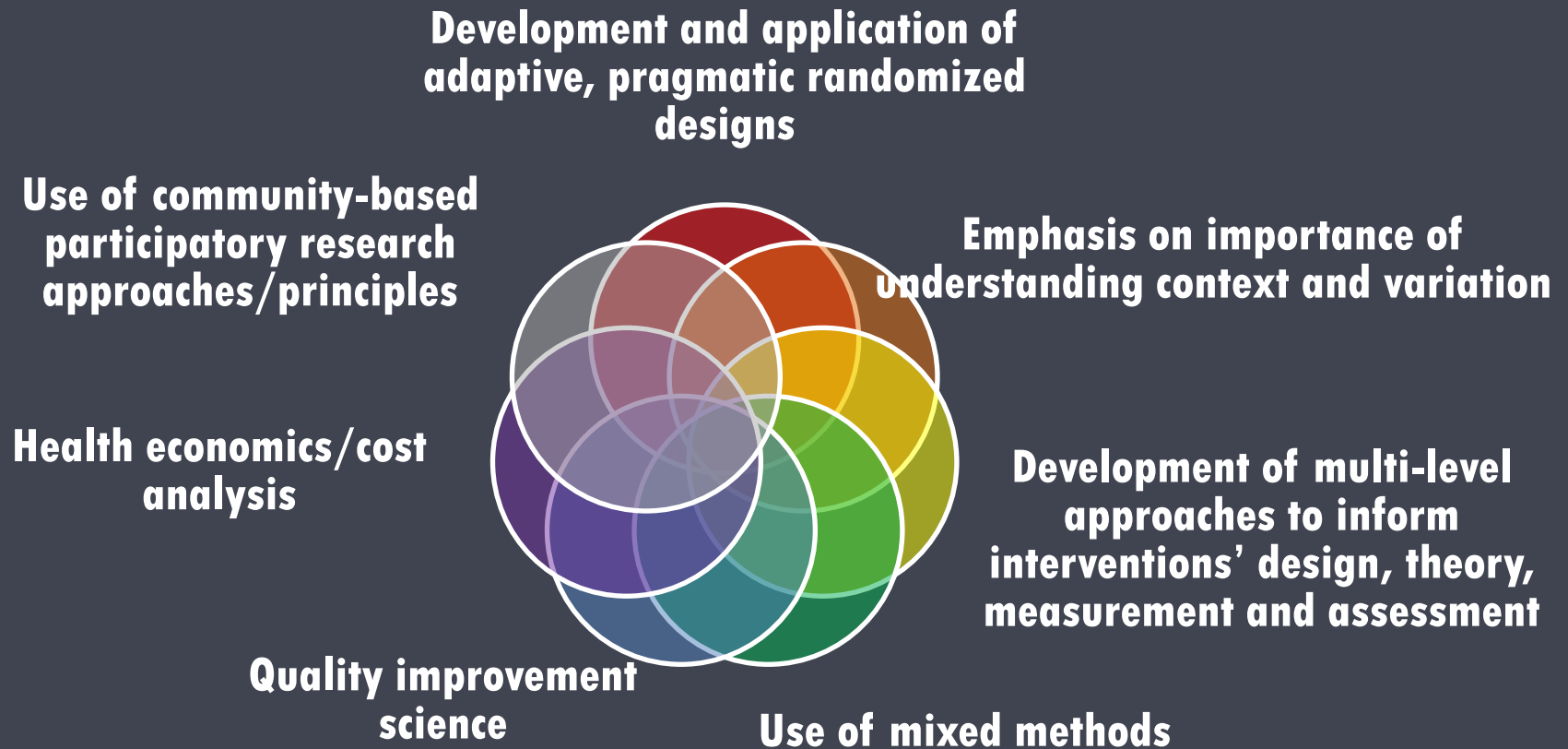
Responsive and  
relevant: 5  
cross-cutting  
themes

Methods  
relevance

PI/NRN  
expertise



# Methods relevance



# Guiding principles for collaboration with external partners

- Overarching guidelines
- Statistical analysis and publication
- Research grants and collaborative projects

# Opportunities for collaboration

- *Bring ideas or questions you are interested in to us!*
- Consider funding or co-funding one of the existing pending or in process studies, or suggesting ancillary/related studies
- Funds to support students, early career researchers/trainees, visiting fellows or professorships
- Funds to support dissemination work (e.g. conference travel; presentations to AAFP chapters)

# Model of collaboration

- Identification of broad topic, research questions, goals, priorities
- Vetting process and criteria
- Proposal development & pre-award activities
- Project implementation & post-award activities
- Analysis, interpretation, dissemination of results

# Thank you!

- We look forward to talking about research opportunities with you