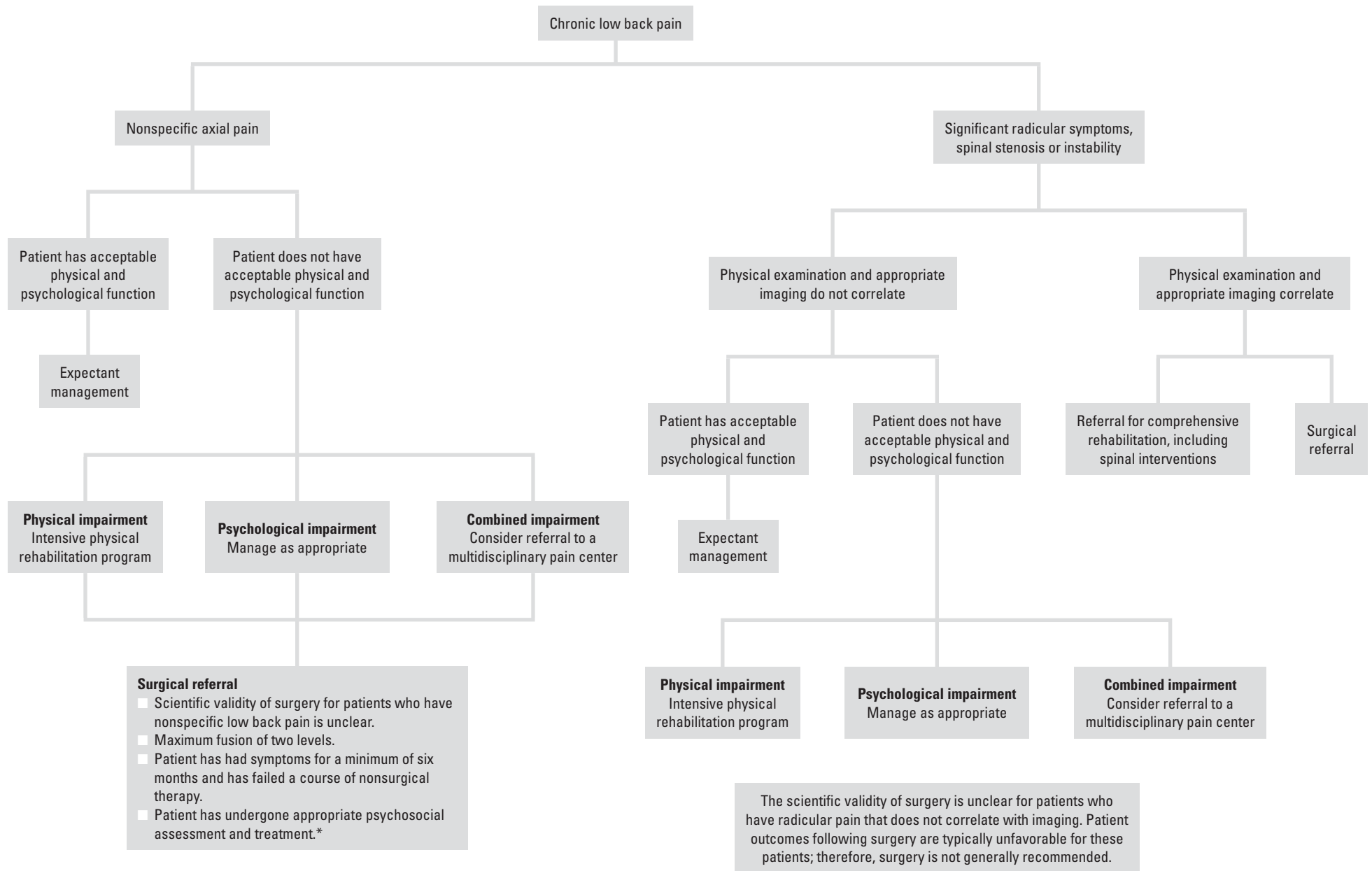


**Figure 1. Primary Care Management of the Adult Patient Who Has Chronic Low Back Pain**



\* NASS Task Force on Clinical Guidelines. Phase III Clinical Guidelines for Multidisciplinary Spine Care Specialists. Unremitting low back pain. 1st ed. LaGrange, Ill: North American Spine Society; 2000.

Copyright © 2008. American Academy of Family Physicians. All rights reserved. Reuse of this material is prohibited without the expressed written consent of the AAFP. Please contact copyrights@aafp.org.

From: American Academy of Family Physicians. Caring for Patients Who Have Chronic Low Back Pain. Leawood, Kan: American Academy of Family Physicians; 2008:1-8.