

# Diagnosis and Management of Endometriosis

ANNE L. MOUNSEY, M.D., *University of Virginia School of Medicine, Charlottesville, Virginia*

ALEX WILGUS, M.D., *Lynchburg Family Medicine Residency Program, Lynchburg, Virginia*

DAVID C. SLAWSON, M.D., *University of Virginia School of Medicine, Charlottesville, Virginia*

Signs and symptoms of endometriosis are nonspecific, and an acceptably accurate noninvasive diagnostic test has yet to be reported. Serum markers do not provide adequate diagnostic accuracy. The preferred method for diagnosis of endometriosis is surgical visual inspection of pelvic organs with histologic confirmation. Such diagnosis requires an experienced surgeon because the varied appearance of the disease allows less-obvious lesions to be overlooked. Empiric use of nonsteroidal anti-inflammatory drugs or acetaminophen is a reasonable symptomatic treatment, but the effectiveness of these agents has not been well-studied. Oral contraceptive pills, medroxyprogesterone acetate, and intrauterine levonorgestrel are relatively effective for pain relief. Danazol and various gonadotropin-releasing hormone analogues also are effective but may have significant side effects. There is limited evidence that surgical ablation of endometriotic deposits may decrease pain and increase fertility rates in women with endometriosis. Presacral neurectomy is particularly beneficial in women with midline pelvic pain. Hysterectomy and bilateral salpingo-oophorectomy definitively treat pain from endometriosis at 10 years in 90 percent of patients. (*Am Fam Physician* 2006;74:594-600, 601-2. Copyright © 2006 American Academy of Family Physicians.)

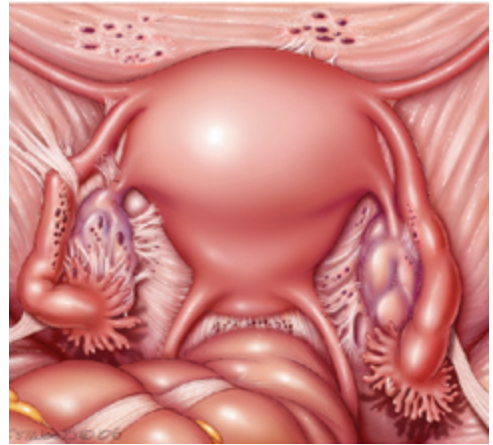


ILLUSTRATION BY WILLIAM B. WESTWOOD

► **Patient information:**  
A handout on endometriosis is provided on page 601.



The online version of this article includes supplemental content at <http://www.aafp.org/afp>.

**E**ndometriosis is characterized by the presence of endometrial tissue outside the endometrial cavity. These ectopic deposits of endometrium may be found in the ovaries, peritoneum, uterosacral ligaments, and pouch of Douglas (*Figure 1*). Rarely, extrapelvic deposits of endometrial tissue are found.

Morbidity rates associated with endometriosis are considerable. Between 1990 and 1998, endometriosis was the third most common gynecologic diagnosis listed in hospital discharge summaries of women 15 to 44 years of age.<sup>1</sup> The prevalence of endometriosis in the general population is estimated to be 10 percent.<sup>2</sup> A much higher prevalence of up to 82 percent occurs in women with pelvic pain, and in women undergoing investigation for infertility the prevalence is 21 percent.<sup>2-4</sup> The prevalence in women undergoing sterilization is 3.7 to 6 percent.<sup>3,5</sup>

## Etiology and Pathophysiology

Several theories have been suggested to explain the pathogenesis of endometriosis.

The most widely held theory involves the retrograde reflux of menstrual tissue from the fallopian tubes during menstruation. Two other possibilities are the celomic metaplasia and embryonic rests theories. Celomic metaplasia hypothesizes that the mesothelium covering the ovaries invaginates into the ovaries, then undergoes metaplasia into endometrial tissue. The embryonic rests theory hypothesizes that Müllerian remnants in the rectovaginal region differentiate into endometrial tissue. A woman's risk for endometriosis increases with increased exposure to endometrial material; thus, shorter menstrual cycles, longer bleeding, and early menarche are risk factors (*Table 1*).<sup>2,6-10</sup> Being overweight and smoking have been associated with a lower risk of endometriosis.<sup>11</sup>

## Diagnosis

### CLINICAL PRESENTATION

Endometriosis usually becomes apparent in the reproductive years when the lesions are stimulated by ovarian hormones. Symptoms tend to be strongest premenstrually, subsiding

**SORT: KEY RECOMMENDATIONS FOR PRACTICE**

<i>Clinical recommendation</i>	<i>Evidence rating</i>	<i>References</i>
The preferred method for diagnosing endometriosis is direct visualization of lesions with histologic confirmation.	C	15
Danazol (Danocrine) may be used for pain relief in patients with endometriosis.	A	22
OCPs, progesterone-only OCPs, and medroxyprogesterone acetate (Provera) should be used as first-line therapies for treating pain associated with endometriosis.	A	24-26
Because gonadotropin-releasing hormone analogues provide equivalent pain relief as OCPs and progestogens with more side effects, they should be used only as second- or third-line agents.	A	27
Surgical ablation of endometrial deposits with or without laparoscopic uterine nerve ablation can be performed for pain relief.	B	30, 31
Laparoscopic surgery can be performed in women with subfertility and endometriosis.	B	32
Presacral neurectomy can be performed in women with midline abdominal pain from endometriosis.	B	31
Laparoscopic cystectomy is preferred over drainage for pain relief in women with endometriosis.	B	33

OCPs = oral contraceptive pills.

A = consistent, good-quality patient-oriented evidence; B = inconsistent or limited-quality patient-oriented evidence; C = consensus, disease-oriented evidence, usual practice, expert opinion, or case series. For information about the SORT evidence rating system, see page 542 or <http://www.aafp.org/afpsort.xml>.

after cessation of menses. Pelvic pain is the most common presenting symptom; other symptoms include back pain, dyspareunia, loin pain, dyschezia (i.e., pain on defecation), and pain with micturition. A patient survey of women in the United Kingdom and United States who were referred to university-based endometriosis centers found that 70 to 71 percent presented with pelvic pain, 71 to 76 percent with dysmenorrhea, 44 percent with dyspareunia, and 15 to 20 percent with infertility.<sup>12</sup> In a British study of women with pelvic pain, many patients who eventually were diagnosed with endometriosis had been diagnosed previously with irritable bowel syndrome.<sup>13</sup> Endometriosis is associated with infertility because of adhesions that distort the pelvic anatomy and cause impaired ovum release and pickup. However, tubal distortion is not the only cause of infertility, because patients with endometriosis seem to have poor ovarian reserve with low oocyte and embryo quality. A meta-analysis of 22 studies evaluating in vitro fertilization outcomes found that patients with endometriosis had a pregnancy rate of nearly one half that of patients without endometriosis, with decreases in fertilization, implantation, and oocyte production rates.<sup>14</sup>

**SURGICAL PRESENTATION**

The preferred method for the diagnosis of endometriosis is direct visualization of ectopic endometrial lesions (usually via



**Figure 1.** Laparoscopic view of deposits of endometrial tissue (arrow) on the ovary.

**TABLE 1**

**Risk Factors for Endometriosis**

<i>Risk factor/comparison</i>	<i>Odds ratio</i>	<i>95% confidence interval</i>
Mother or sister has endometriosis/mother and sister do not have endometriosis	7.2	2.1 to 24.3 <sup>6</sup>
Menstrual flow six days or more/flow less than six days	2.5	1.1 to 5.9 <sup>7</sup>
Menstrual cycle less than 28 days/cycle of 28 to 34 days	2.1	1.5 to 2.9 <sup>8</sup>
Consuming one or more alcoholic drinks per week/no alcohol consumption	1.8	1.0 to 3.2 <sup>9</sup>
Never used OCPs/ever used OCPs	1.6	1.2 to 2.2 <sup>10</sup>
Use of pads and tampons/use of either pads or tampons	1.4	0.9 to 2.0 <sup>2</sup>

OCPs = oral contraceptive pills.

Information from references 2 and 6 through 10.

TABLE 2  
Differential Diagnosis of Endometriosis by Symptom

<p><b>Dysmenorrhea</b></p> <p>Primary</p> <p>Secondary (e.g., adenomyosis, myomas, infection, cervical stenosis)</p> <p><b>Dyspareunia</b></p> <p>Diminished lubrication or vaginal expansion because of insufficient arousal</p> <p>Gastrointestinal causes (e.g., constipation, irritable bowel syndrome)</p> <p>Infection</p> <p>Musculoskeletal causes (e.g., pelvic relaxation, levator spasm)</p> <p>Pelvic vascular congestion</p> <p>Urinary causes (e.g., urethral syndrome, interstitial cystitis)</p>	<p><b>Generalized pelvic pain</b></p> <p>Endometritis</p> <p>Neoplasms, benign or malignant</p> <p>Nongynecologic causes</p> <p>Ovarian torsion</p> <p>Pelvic adhesions</p> <p>Pelvic inflammatory disease</p> <p>Sexual or physical abuse</p> <p><b>Infertility</b></p> <p>Anovulation</p> <p>Cervical factors (e.g., mucus, sperm, antibodies, stenosis)</p> <p>Luteal phase deficiency</p> <p>Male factor infertility</p> <p>Tubal disease or infection</p>
--	--

Information from reference 16.

laparoscopy) accompanied by histologic confirmation of the presence of at least two of the following features: hemosiderin-laden macrophages or endometrial epithelium, glands, or stroma.<sup>15</sup> Diagnosis based solely on visual inspection requires a surgeon with experience in identifying the many possible appearances of endometrial lesions; nonetheless, there is relatively poor correlation between visual diagnosis and confirmed histology. For example, microscopic endometrial lesions may be found in normal-appearing peritoneal samples.

#### DIFFERENTIAL DIAGNOSIS

Given the nonspecific symptoms of endometriosis, the differential diagnosis is lengthy (Table 2).<sup>16</sup> The possibility of malignancy must be considered.

#### PHYSICAL EXAMINATION

There are few well-studied clinical maneuvers for use in the diagnosis of endometriosis. Signs may be absent or may include tender nodules in the posterior vaginal fornix, uterine motion tenderness, a fixed and retroverted uterus, or tender adnexal masses resulting from endometriomas. One study determined the usefulness of clinical signs and

symptoms in the diagnosis of endometriosis in women who present with infertility.<sup>17</sup> Although no test provides strong evidence for the presence of endometriosis, the symptom of uterosacral pain has the highest positive likelihood ratio.

#### DIAGNOSTIC TESTS

Two tests, serum cancer antigen 125 (CA 125) and magnetic resonance imaging (MRI), have been closely studied for endometriosis, but neither have shown impressive diagnostic accuracy. The use of MRI for diagnosis of an endometrial cyst is much more accurate than for endometriosis. Although there is a wealth of interest in the use of serum markers to diagnose endometriosis, none are accurate enough to be used in routine clinical practice. Elevation in levels of CA 125 (i.e., greater than 35 IU per mL), more commonly known for its use in the diagnosis or monitoring of ovarian cancer, is of limited diagnostic value; however, given its high specificity, CA 125 may be useful as a marker for disease monitoring and treatment follow-up. In addition, a well-designed meta-analysis found that measurement of serum CA 125 levels may be useful in identifying patients with infertility who may have severe

endometriosis and could benefit from early surgical treatment.<sup>18</sup>

One report on the use of serum cancer antigen 19-9 (CA 19-9) in the diagnosis of endometriosis found that CA 19-9 has inferior sensitivity to CA 125 but may be of some use in determining disease severity.<sup>19</sup> There is emerging interest in a variety of other markers. One relatively small study found that the cytokine interleukin-6 (at a cutoff value of 2 pg per mL) may be more sensitive and specific than CA 125.<sup>20</sup> Measurement of tumor necrosis factor  $\alpha$  in the peritoneal fluid also has shown diagnostic promise, with sensitivity and specificity of 1 and 0.89, respectively. However, this test requires an invasive procedure to obtain the fluid. It may prove useful as an adjunct to less-obvious surgical diagnosis.

Transvaginal ultrasonography has been proven useful in the diagnosis of retroperitoneal and uterosacral lesions, but it does not accurately identify peritoneal lesions or small endometriomas.<sup>21</sup> Computed tomography (CT) has not been studied rigorously or promoted as a diagnostic imaging modality.

#### DIAGNOSTIC STRATEGY

There are no sufficiently sensitive and specific signs and symptoms or diagnostic tests for the clinical diagnosis of endometriosis, and no diagnostic strategy is supported by evidence of effectiveness. The American College of Obstetricians and Gynecologists recommends a pretreatment diagnostic strategy to exclude other causes of pelvic pain such as chronic pelvic inflammatory disease, fibroid tumors, and ovarian cysts.<sup>15</sup> Nongynecologic causes of pain also should be excluded. Pelvic and rectal examinations should be performed, although the yield of the physical examination is low. Findings of a retroverted uterus, decreased uterine mobility, cervical motion tenderness, and tender uterosacral nodularity are suggestive of endometriosis when present, but these findings often are absent. Laboratory tests and radiologic examinations usually are not warranted. Measurement of CA 125 levels may be useful for monitoring disease progress, and MRI has a high sensitivity in detecting endometrial


cysts but poor diagnostic accuracy for endometriosis in general. Empiric diagnosis and treatment of endometriosis is reasonable, based on clinical suspicion and presentation. Patients with persistent symptoms after empiric treatment should be referred for laparoscopy, the preferred method for diagnosis of endometriosis.

#### Treatment

##### MEDICAL TREATMENT

Standard medical therapies for patients with endometriosis include analgesics (nonsteroidal anti-inflammatory drugs [NSAIDs] or acetaminophen), oral contraceptive pills (OCPs), androgenic agents (e.g., danazol [Danocrine]),<sup>22</sup> progestogens (e.g., medroxyprogesterone acetate [Provera]), gonadotropin-releasing hormone analogues (GnRHAs; e.g., leuprolide [Lupron], goserelin [Zoladex], triptorelin [Trelstar Depot], nafarelin [Synarel]), and antiprogestogens (e.g., gestrinone). *Table 3*<sup>23</sup> lists the indications and standard dosages for medications used in the treatment of endometriosis. *Figure 2* presents a decision tree for treatment of endometriosis in select patients.

Although the use of NSAIDs for pain relief seems logical, their effectiveness has not been studied well or compared with other treatments. For empiric medical therapy, OCPs and medroxyprogesterone acetate have apparent therapeutic equivalence and should be used as first-line therapies.<sup>24-26</sup>

Many sources support the empiric use of GnRHAs for treatment of the pain associated with endometriosis;<sup>27</sup> however, a systematic review found them to be no more effective than OCPs or progestogens<sup>24</sup> (*online Table A*). Furthermore, GnRHAs can have hypoestrogenic side effects.<sup>28</sup>  These side effects may be alleviated somewhat with add-back therapy (i.e., replacement of hormones blocked by the action of GnRHAs) without diminishing the effect of the GnRHa; however, the optimal method of add-back therapy has not been established.<sup>27</sup> One small study found the levonorgestrel-releasing intrauterine system (Mirena) to be effective in postoperative treatment for dysmenorrhea.<sup>29</sup>

**SURGICAL TREATMENT**

No randomized controlled trials (RCTs) have evaluated ablation of endometrial deposits alone. Ablation of endometrial deposits with or without laparoscopic uterine nerve ablation decreases pain (*online Table B*).<sup>30,31</sup>



Presacral neurectomy, a procedure in which the sympathetic nerves from the uterus are divided, may decrease midline abdominal pain.<sup>31</sup> Laparoscopic surgery with ablation of endometrial deposits also may increase fertility in women with endometriosis.<sup>32</sup> No systematic reviews or meta-analyses have compared laparoscopic drainage and laparoscopic cystectomy for the treatment of ovarian endometriomas. One RCT found cystectomy to be superior to drainage in pain relief at two years.<sup>33</sup>

Hysterectomy and bilateral salpingo-oophorectomy are definitive treatments for endometriosis, although there are no RCTs to support this. In a retrospective analysis of women 10 years after hysterectomy and bilateral salpingectomy, there was a 10 percent

incidence of recurrent symptoms; women who had only hysterectomy had a 62 percent incidence of recurrent symptoms.<sup>34</sup>

**CRITERIA FOR APPROPRIATE REFERRAL**

Referral is required for definitive diagnosis of endometriosis by laparoscopy or laparotomy and biopsy, or for surgical ablation. Medical treatment with GnRHAs or danazol (if the use of OCPs or progestogens proves ineffective) may be expensive with many possible side effects, and these therapies may be outside the range of usual primary care pharmacotherapy. Physicians experienced in the use of GnRHAs and danazol may be comfortable prescribing such medications; otherwise, referral is appropriate.

**Prognosis**

The natural history of endometriosis suggests that the disease may stabilize or resolve on its own. In a small study that randomized patients with endometriosis to progestin or placebo, follow-up laparoscopy

**TABLE 3**  
**Drug Treatment for Endometriosis**

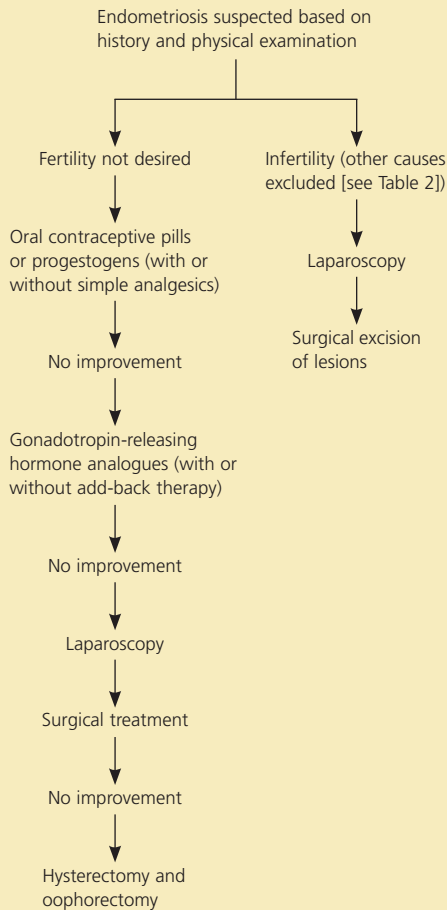
<i>Medication</i>	<i>Indications</i>	<i>Dosing</i>	<i>Comment</i>
Depot MDPA (Depo-Provera)	Pain relief	150 mg intramuscularly every three months	Common usage in primary care
MDPA (Provera)	Pain relief	30 to 100 mg daily, given orally	Common usage in primary care
Combined OCPs	Pain relief	0.02 to 0.03 mg ethinyl estradiol and 0.15 mg desogestrel daily (cyclically) for six months*	Common usage in primary care
Levonorgestrel intrauterine system (Mirena)	Pain relief after surgery	Intrauterine system	Can be placed easily in primary care setting
Gonadotropin-releasing hormone analogues (e.g., goserelin [Zoladex], leuprolide [Lupron], triptorelin [Trelstar Depot])	Pain relief	3.75 mg of leuprolide injected every four weeks or 3.6 mg of goserelin implanted subcutaneously for six months	Expensive; significant side effects (hypoestrogenic symptoms)
Nafarelin (Synarel)	Pain relief	200 mcg intranasally twice daily for six months	Expensive; significant side effects
Danazol (Danocrine)	Pain relief	200 mg given orally three times daily; 400 mg given orally twice daily for six months	Significant androgenic side effects
Gestrinone	Pain relief	2.5 mg given orally twice weekly for six months	Hot flashes

MDPA = medroxyprogesterone acetate; OCPs = oral contraceptive pills.

\*—In one study, combined OCPs were given continuously for two years.<sup>23</sup>



## Treatment of Patients with Endometriosis



**Figure 2.** Steps to consider for treatment of women with endometriosis.

after one year showed that regardless of the treatment arm, 47 percent of patients had progression of their endometriosis, 25 percent had disease resolution, and 25 percent were unchanged.<sup>35</sup> Endometriosis may recur after surgery whether or not the patients are treated with estrogen replacement. Likewise, postmenopausal women may develop endometriosis if they use hormone therapy.

### The Authors

**ANNE L. MOUNSEY, M.D.**, is assistant professor of family medicine at the University of Virginia School of Medicine, Charlottesville. She graduated from St. Thomas' Hospital School of Medicine, London, and completed her post-graduate training in family medicine at Barnet Hospital, London, and John Radcliffe Hospital, Oxford.

**ALEX WILGUS, M.D.**, is a faculty member and director of patient care at the Lynchburg (Va.) Family Medicine Residency Program, and he is clinical assistant professor of family medicine at the University of Virginia School

of Medicine. He received his medical degree from the University of North Carolina School of Medicine, Durham, and completed a residency at the Lynchburg Family Medicine Residency Program.

**DAVID C. SLAWSON, M.D.**, is the B. Lewis Barnett, Jr., professor of family medicine at the University of Virginia School of Medicine. He also is director and founder of the Center for Information Mastery at the University of Virginia and holds a joint appointment as professor in the Department of Health Evaluation Sciences. Dr. Slawson received his medical degree from the University of Michigan Medical School, Ann Arbor, and completed a family medicine residency at the University of Virginia School of Medicine.

*Address correspondence to Anne L. Mounsey, M.D., Dept. of Family Medicine, University of Virginia School of Medicine, P.O. Box 800729, Charlottesville, VA 22908. Reprints are not available from the authors.*

Author disclosure: Nothing to disclose.

### REFERENCES

1. Velebil P, Wingo PA, Xia Z, Wilcox LS, Peterson HB. Rate of hospitalization for gynecologic disorders among reproductive-age women in the United States. *Obstet Gynecol* 1995;86:764-9.
2. Eskenazi B, Warner ML. Epidemiology of endometriosis. *Obstet Gynecol Clin North Am* 1997;24:235-58.
3. Mahmood TA, Templeton A. Prevalence and genesis of endometriosis. *Hum Reprod* 1991;6:544-9.
4. Laufer MR, Goitein L, Bush M, Cramer DW, Emans SJ. Prevalence of endometriosis in adolescent girls with chronic pelvic pain not responding to conventional therapy. *J Pediatr Adolesc Gynecol* 1997;10:199-202.
5. Sangi-Haghpeykar H, Poindexter AN III. Epidemiology of endometriosis among parous women. *Obstet Gynecol* 1995;85:983-92.
6. Moen MH, Magnus P. The familial risk of endometriosis. *Acta Obstet Gynecol Scand* 1993;72:560-4.
7. Darrow SL, Vena JE, Batt RE, Zielezny MA, Michalek AM, Selman S. Menstrual cycle characteristics and the risk of endometriosis. *Epidemiology* 1993;4:135-42.
8. Cramer DW, Wilson E, Stillman RJ, Berger MJ, Belisle S, Schiff I, et al. The relation of endometriosis to menstrual characteristics, smoking, and exercise. *JAMA* 1986; 255:1904-8.
9. Grodstein F, Goldman MB, Cramer DW. Infertility in women and moderate alcohol use. *Am J Public Health* 1994; 84:1429-32.
10. Parazzini F, Ferraroni M, Bocciolone L, Tozzi L, Rubessa S, La Vecchia C. Contraceptive methods and risk of pelvic endometriosis. *Contraception* 1994;49:47-55.
11. Cramer DW, Missmer SA. The epidemiology of endometriosis. *Ann N Y Acad Sci* 2002;955:11-22.
12. Kuohung W, Jones GL, Vitonis AF, Cramer DW, Kennedy SH, Thomas D, et al. Characteristics of patients with endometriosis in the United States and the United Kingdom. *Fertil Steril* 2002;78:767-72.
13. Zondervan KT, Yudkin PL, Vessey MP, Dawes MG, Barlow DH, Kennedy SH. Patterns of diagnosis and referral in women consulting for chronic pelvic pain in UK

- primary care. *Br J Obstet Gynaecol* 1999;106:1156-61.
14. Barnhart K, Dunsmoor-Su R, Coutifaris C. Effect of endometriosis on in vitro fertilization. *Fertil Steril* 2002; 77:1148-55.
  15. ACOG Committee on Practice Bulletins—Gynecology. ACOG practice bulletin. Medical management of endometriosis. Number 11, December 1999 (replaces Technical Bulletin Number 184, September 1993). Clinical management guidelines for obstetrician-gynecologists. *Int J Gynaecol Obstet* 2000;71:183-96.
  16. American College of Obstetrics and Gynecology. Chronic pelvic pain. ACOG technical bulletin no. 223. Washington, D.C.: American College of Obstetrics and Gynecology, 1996:3.
  17. Matorras R, Rodriguez F, Pijoan JI, Soto E, Perez C, Ramon O, et al. Are there any clinical signs and symptoms that are related to endometriosis in infertile women? *Am J Obstet Gynecol* 1996;174:620-3.
  18. Mol BW, Bayram N, Lijmer JG, Wiegerinck MA, Bongers MY, van der Veen F, et al. The performance of CA-125 measurement in the detection of endometriosis: a meta-analysis. *Fertil Steril* 1998;70:1101-8.
  19. Harada T, Kubota T, Aso T. Usefulness of CA19-9 versus CA125 for the diagnosis of endometriosis. *Fertil Steril* 2002;78:733-9.
  20. Bedaiwy MA, Falcone T. Laboratory testing for endometriosis. *Clin Chim Acta* 2004;340:41-56.
  21. Brosens I, Puttemans P, Campo R, Gordts S, Brosens J. Non-invasive methods of diagnosis of endometriosis. *Curr Opin Obstet Gynecol* 2003;15:519-22.
  22. Selak V, Farquhar C, Prentice A, Singla A. Danazol for pelvic pain associated with endometriosis. *Cochrane Database Syst Rev* 2001;(4):CD000068.
  23. Vercellini P, Frontino G, De Giorgi O, Pietropaolo G, Pasin R, Crosignani PG. Continuous use of an oral contraceptive for endometriosis-associated recurrent dysmenorrhea that does not respond to a cyclic pill regimen. *Fertil Steril* 2003;80:560-3.
  24. Moore J, Kennedy S, Prentice A. Modern combined oral contraceptives for pain associated with endometriosis. *Cochrane Database Syst Rev* 1997;(4):CD001019.
  25. Prentice A, Deary AJ, Bland E. Progestagens and anti-progestagens for pain associated with endometriosis. *Cochrane Database Syst Rev* 2000;(2):CD002122.
  26. Vercellini P, Cortesi I, Crosignani PG. Progestins for symptomatic endometriosis: a critical analysis of the evidence. *Fertil Steril* 1997;68:393-401.
  27. Prentice A, Deary AJ, Goldbeck-Wood S, Farquhar C, Smith SK. Gonadotrophin-releasing hormone analogues for pain associated with endometriosis. *Cochrane Database Syst Rev* 1999;(2):CD000346.
  28. Vercellini P, Trespidi L, Colombo A, Vendola N, Marchini M, Crosignani PG. A gonadotropin-releasing hormone agonist versus a low-dose oral contraceptive for pelvic pain associated with endometriosis. *Fertil Steril* 1993;60:75-9.
  29. Vercellini P, Frontino G, De Giorgi O, Aimi G, Zaina B, Crosignani PG. Comparison of a levonorgestrel-releasing intrauterine device versus expectant management after conservative surgery for symptomatic endometriosis: a pilot study. *Fertil Steril* 2003;80:305-9.
  30. Jacobson TZ, Barlow DH, Garry R, Koninckx P. Laparoscopic surgery for pelvic pain associated with endometriosis. *Cochrane Database Syst Rev* 2001;(2):CD001300.
  31. Proctor ML, Latthe PM, Farquhar CM, Khan KS, Johnson NP. Surgical interruption of pelvic nerve pathways for primary and secondary dysmenorrhoea. *Cochrane Database Syst Rev* 2005;(4):CD001896.
  32. Jacobson TZ, Barlow DH, Koninckx PR, Olive D, Farquhar C. Laparoscopic surgery for subfertility associated with endometriosis. *Cochrane Database Syst Rev* 2002;(4):CD001398.
  33. Beretta P, Franchi M, Ghezzi F, Busacca M, Zupi E, Bolis P. Randomized clinical trial of two laparoscopic treatments of endometriomas: cystectomy versus drainage and coagulation. *Fertil Steril* 1998;70:1176-80.
  34. Namnoum AB, Hickman TN, Goodman SB, Gehlbach DL, Rock JA. Incidence of symptom recurrence after hysterectomy for endometriosis. *Fertil Steril* 1995;64:898-902.
  35. Cooke ID, Thomas EJ. The medical treatment of mild endometriosis. *Acta Obstet Gynecol Scand Suppl* 1989;150:27-30.

TABLE A (ONLINE ONLY)

**Medical Treatment for Endometriosis: Summary of Studies**

Study	Population/setting	Outcomes	Comment
Combined OCPs compared with goserelin (Zoladex) <sup>A1</sup>	Women of reproductive age, surgically diagnosed/ primary and secondary health care settings	Pain relief, side effects	No significant difference in pain six months posttreatment; significantly more side effects with goserelin
Progestogens and anti-progestogens <sup>A2,A3</sup>	Premenopausal women, laparoscopically diagnosed/ primary and secondary health care settings	Pain relief, resolution of endometriotic implants, side effects, compliance	Equivalent to other medical therapies for pain (e.g., danazol [Danocrine]), therefore likely effective; scant good data
GnRHAs compared with placebo <sup>A4</sup>	Premenopausal women, laparoscopically diagnosed, between 18 and 50 years of age/ gynecologic outpatient clinics	Pain relief and side effects	More effective than placebo; high dropout rates in placebo group
GnRHAs compared with other medical treatments <sup>A4,A5</sup>	Premenopausal women, laparoscopically diagnosed, between 18 and 50 years of age/ gynecologic outpatient clinics	Pain relief and side effects	Similar effectiveness as other medical treatments (OCPs, gestrinone, danazol); gestrinone possibly more effective; OCPs less effective for dysmenorrhea
GnRHAs compared with GnRHAs plus add-back therapy <sup>A4</sup>	Premenopausal women, laparoscopically diagnosed, between 18 and 50 years of age/ gynecologic outpatient clinics	Pain relief and side effects	Similar effectiveness; fewer side effects with add-back hormone therapy
Danazol <sup>A6</sup>	Women of reproductive age, surgically confirmed diagnosis/ settings not specified (systematic review)	Subjective symptom relief, objective disease improvement, side effects, compliance, disease recurrence	Significantly more effective than placebo after six months' therapy but with significant side effects (e.g., weight gain, acne)
Preoperative hormonal suppression for endometriosis surgery compared with surgery alone <sup>A7</sup>	Various populations/settings not specified (systematic review of 11 studies)	Pain relief, disease recurrence, pregnancy rates, adverse effects	Significant reduction in objective disease extent scores, but insufficient evidence to support use; no evidence of decreased disease recurrence or improved pregnancy rates
Hormonal suppression after endometriosis surgery compared with surgery alone <sup>A7</sup>	Various populations/settings not specified (systematic review of 11 studies)	Pain relief, disease recurrence, pregnancy rates	No benefit; insufficient evidence. No evidence of decreased recurrence or improved pregnancy rates
Ovulation suppression for endometriosis-associated subfertility compared with placebo, no treatment, or danazol <sup>A8</sup>	Women with visually diagnosed disease who did not conceive after at least 12 months of unprotected intercourse/settings not specified (systematic review)	Pregnancy, adverse outcomes	Not beneficial for improvement of subfertility; multiple side effects
Levonorgestrel-releasing intrauterine system (Mirena) for dysmenorrhea after surgery <sup>A9</sup>	Parous women with moderate to severe dysmenorrhea who were undergoing surgery/tertiary care referral center	Pain relief one year after surgery	10 percent recurrence of moderate to severe dysmenorrhea in treatment group compared with 45 percent in control group

OCPs = oral contraceptive pills; GnRHAs = gonadotropin-releasing hormone analogues.

## Information from references:

A1: Moore J, Kennedy S, Prentice A. Modern combined oral contraceptives for pain associated with endometriosis. *Cochrane Database Syst Rev* 1997;(4):CD001019.

A2: Prentice A, Deary AJ, Bland E. Progestagens and anti-progestagens for pain associated with endometriosis. *Cochrane Database Syst Rev* 2000;(2):CD002122.

A3: Vercellini P, Cortesi I, Crosignani PG. Progestins for symptomatic endometriosis: a critical analysis of the evidence. *Fertil Steril* 1997;68:393-401.

A4: Prentice A, Deary AJ, Goldbeck-Wood S, Farquhar C, Smith SK. Gonadotrophin-releasing hormone analogues for pain associated with endometriosis. *Cochrane Database Syst Rev* 1999;(2):CD000346.

A5: Vercellini P, Trespidi L, Colombo A, Vendola N, Marchini M, Crosignani PG. A gonadotropin-releasing hormone agonist versus a low-dose oral contraceptive for pelvic pain associated with endometriosis. *Fertil Steril* 1993;60:75-9.

A6: Selak V, Farquhar C, Prentice A, Singla A. Danazol for pelvic pain associated with endometriosis. *Cochrane Database Syst Rev* 2001;(4):CD000068.

A7: Yap C, Furness S, Farquhar C. Pre and post operative medical therapy for endometriosis surgery. *Cochrane Database Syst Rev* 2004;(3):CD003678.

A8: Hughes E, Fedorkow D, Collins J, Vandekerckhove P. Ovulation suppression for endometriosis. *Cochrane Database Syst Rev* 2003;(3):CD000155.

A9: Vercellini P, Frontino G, De Giorgi O, Aimi G, Zaina B, Crosignani PG. Comparison of a levonorgestrel-releasing intrauterine device versus expectant management after conservative surgery for symptomatic endometriosis: a pilot study. *Fertil Steril* 2003;80:305-9.



**TABLE B (ONLINE ONLY)**  
**Surgical Treatment for Endometriosis: Summary of Studies**

<i>Study</i>	<i>Population</i>	<i>Outcomes</i>	<i>Comment</i>
Systematic review of LUNA <sup>B1</sup>	Women with endometriosis and dysmenorrhea	Pain relief	LUNA with ablation was not superior to ablation alone.
Systematic review that included one study of laparoscopic surgery and LUNA compared with no treatment <sup>B2</sup>	Women with endometriosis and pelvic pain	Increased pain relief at six months	LUNA was used with ablation, so benefit cannot be determined.
Systematic review of presacral neurectomy with ablation compared with ablation alone <sup>B1</sup>	Women with endometriosis and dysmenorrhea	No overall difference in pain relief	Women with midline abdominal pain had a significant decrease in pain.
Systematic review of two RCTs that evaluated fertility rates after laparoscopic ablation of endometrial deposits <sup>B3</sup>	Infertile women 39 years of age with minimal or mild endometriosis	Increase in ongoing pregnancy and live birth rates	Both studies had methodologic flaws.

*LUNA = laparoscopic uterine nerve ablation; RCT = randomized controlled trial.*

*Information from references:*

*B1: Proctor ML, Farquhar CM, Sinclair OJ, Johnson NP. Surgical interruption of pelvic nerve pathways for primary and secondary dysmenorrhoea. Cochrane Database Syst Rev 2005;(4):CD001896.*

*B2: Jacobson TZ, Barlow DH, Garry R, Koninckx P. Laparoscopic surgery for pelvic pain associated with endometriosis. Cochrane Database Syst Rev 2001;(2):CD001300.*

*B3: Jacobson TZ, Barlow DH, Koninckx PR, Olive D, Farquhar C. Laparoscopic surgery for subfertility associated with endometriosis. Cochrane Database Syst Rev 2002;(4):CD001398.*