

Evaluating Fever of Unidentifiable Source in Young Children

DENISE K. SUR, MD, and ELISE L. BUKONT, DO, *University of California, Los Angeles, Los Angeles, California*

Most children will have been evaluated for a febrile illness by 36 months of age. Although the majority will have a self-limited viral illness, studies done before the use of *Haemophilus influenzae* type b and *Streptococcus pneumoniae* vaccines showed that approximately 10 percent of children younger than 36 months without evident sources of fever had occult bacteremia and serious bacterial infection. More recent studies have found lower rates of bacterial infection (1.6 to 1.8 percent). Any infant younger than 29 days and any child that appears toxic should undergo a complete sepsis work-up. However, nontoxic-appearing children one to 36 months of age, who have a fever with no apparent source and who have received the appropriate vaccinations, could undergo screening laboratory analysis and be sent home with close follow-up. Empiric intramuscular antibiotics are suggested for some children; however, cerebrospinal fluid studies should be obtained first. Because immunizations have recently decreased infection rates for *S. pneumoniae* and *H. influenzae* type b, the recommendations for evaluation and treatment of febrile children are evolving and could involve fewer tests and less-presumptive treatment in the future. A cautious approach should still be taken based on the potential for adverse consequences of unrecognized and untreated serious bacterial infection. (*Am Fam Physician* 2007;75:1805-11. Copyright © 2007 American Academy of Family Physicians.)

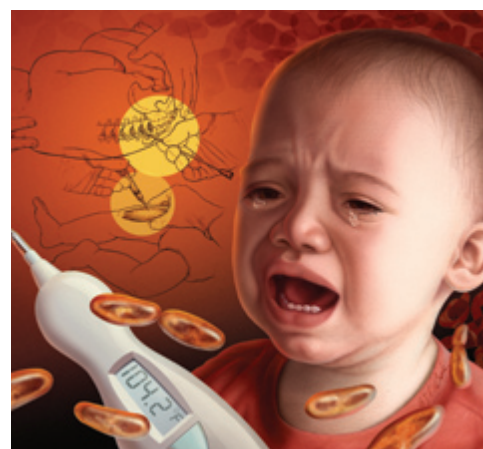


ILLUSTRATION BY TODD BUCK

► **Patient information:** A patient education hand-out on this topic can be found at <http://familydoctor.org/069.xml>.

Even with a thorough history and a complete physical examination, one in five acutely ill, nontoxic-appearing children have an unidentifiable source of fever.¹⁻⁴ Although most of these children have a self-limited viral illness, studies from the 1980s and 1990s have shown that 7 to 13 percent of children younger than 36 months without evident sources of fever had occult bacteremia and serious bacterial infection (SBI).⁵⁻⁷

More recent research has demonstrated a significant decrease in the number of cases of occult bacteremia and SBI in febrile children since the advent of *Haemophilus influenzae* type b and *Streptococcus pneumoniae* vaccines, with occult bacteremia rates of 1.6 to 1.8 percent.^{3,8} Epidemiologic data also have shown a decrease in the rates of *S. pneumoniae* infections since the introduction of a pneumococcal conjugate vaccine.⁹⁻¹³ Although recommendations may change, physicians should still take a cautious approach because of the potential for

adverse consequences from unrecognized and untreated SBI.

Definitions of Fever and SBI

A clinically significant fever is generally defined as a rectal temperature of 100.4°F (38°C) or higher. For previously healthy, well-appearing children three to 36 months of age, a temperature of 102.2°F (39°C) requires further evaluation.^{6,14,15} Studies of children with fever with no clear source consistently defined fever using rectal temperature. A number of studies have shown that axillary and tympanic temperatures are unreliable in young children.¹⁶⁻²² A child with a history of a rectal temperature higher than 100.4°F who is afebrile at the time of presentation should be given the same level of attention as one who has a fever at presentation.^{9,23-26}

In the studies cited in this article, the SBIs found included bacteremia, bacterial gastroenteritis, cellulitis, meningitis, osteomyelitis, pneumonia, septic arthritis, and urinary tract infections.

SORT: KEY RECOMMENDATIONS FOR PRACTICE

<i>Clinical recommendation</i>	<i>Evidence rating</i>	<i>References</i>
Any child younger than 29 days and any child with a toxic appearance, regardless of age, should undergo a complete sepsis work-up and be admitted for observation until culture results are obtained or the source of the fever is found and treated.	A	5, 6, 14, 16, 29, 38, 40
Observation only with close follow-up is recommended for nontoxic infants three to 36 months of age who have a fever lower than 102.2°F (39°C).	B	15, 38
Nontoxic-appearing children 29 to 90 days of age who have a negative screening laboratory analysis (including a complete blood cell count with differential and a urinalysis) can be sent home with a follow-up in 24 hours and detailed return precautions, and given either no antibiotics or ceftriaxone (Rocephin) 50 mg per kg intramuscularly.	B	15, 29

A = consistent, good-quality patient-oriented evidence; B = inconsistent or limited-quality patient-oriented evidence; C = consensus, disease-oriented evidence, usual practice, expert opinion, or case series. For information about the SORT evidence rating system, see page 1754 or <http://www.aafp.org/afpsort.xml>.

History and Physical Examination

The challenge for physicians is to identify febrile children at the lowest risk of SBI and who need less testing and no presumptive treatment while not missing the less common cases of SBI. A number of large prospective studies developed criteria that identify children at low risk of serious infection (e.g., the Boston, Rochester, and Philadelphia protocols).^{7,27,28} All of these protocols recommend beginning with a thorough history and physical examination to identify possible sources of fever. The history should include questions about recent symptoms, vaccinations, exposure to sick contacts, and the child's birth.

If the child has received the appropriate vaccines, he or she has a lower risk of SBI. Any history of serious infection or medical problems, maternal fever at the time of delivery, or group B streptococcal vaginal colonization may put the child at a higher risk of SBI. A history of maternal herpes simplex virus (HSV) infection should prompt screening for HSV, especially in infants younger than 29 days.²⁹ Although response to antipyretics has been considered an indicator of lower risk of SBI, there is no correlation between fever reduction and likelihood of SBI.³⁰

Symptoms and signs of toxicity are associated with a higher risk of SBI. Toxic-appearing children include those with cyanosis, decreased activity, hyper- and hypoventilation, inability to interact with parents or surroundings, irritability, lethargy, poor tone, signs of poor perfusion, tachycardia, or weak eye contact.^{5,6,9,14,27,28,31-39}

In a study of 3,066 children younger than three months, the features most predictive of occult bacteremia and bacterial meningitis were toxic appearance, age younger than 30 days, and rectal temperature of at least 103°F (39.4°C).⁹ However, no single feature identified all febrile patients with SBI, and the absence of any one feature did not rule out SBI.

SBIs are more common in children younger than 90 days and especially so in those younger than 29 days. A meta-analysis of studies published between 1974 and 1990 found that 7.2 percent of all children younger than 90 days with a rectal temperature higher than 102.2°F had an SBI.¹⁶ Bacteremia or bacterial meningitis occurred in 2.5 percent of patients,⁶ with an even higher incidence (8.7 to 13 percent) in infants younger than 29 days.^{14,40}

In one study, the Philadelphia protocol was retrospectively applied to a prior study of 254 febrile infants younger than 29 days admitted to an emergency department for evaluation of SBI. The rate of SBIs for the group of patients was 12.6 percent, which was similar to that found in previous studies. The Philadelphia protocol considered patients to be at low risk if they had normal peripheral white blood cell (WBC) count, urinalysis, stool specimen, and cerebrospinal fluid (CSF); appeared nontoxic; and had no focus of infection. Of the 254 infants, 109 (42.9 percent) could be classified as at low risk based on the protocol, but five were found to have a bacterial infection that would have been missed on initial evaluation if it had been

done based solely on the Philadelphia protocol. Whether these infants would have eventually been treated after close follow-up was unknown. These results demonstrate the unpredictability of SBI in infants.⁴⁰

Diagnostic Tests

WBC COUNT

The WBC count and its differential have been evaluated as predictive features in nearly all studies of fever in young children. In most studies, low risk has been defined as a WBC count of less than 15,000 cells per mm³ (15×10^9 per L), with a bandemia no higher than 1,500 cells per mm³ (1.5×10^9 per L).³¹ In a study of 256 patients between three and 36 months of age, an absolute neutrophil count (ANC) of 10,000 or more cells per mm³ (10×10^9 per L) was as predictive of SBI as a WBC count of more than 15,000 cells per mm³, with a sensitivity of 69 percent and specificity of 79 percent.⁴¹ Note that using a test with this sensitivity as the sole determinant of SBI is inappropriate because it will miss more than 30 percent of patients with SBI.

URINALYSIS

Urine testing has been studied in multiple settings and is generally recommended based on the relatively high incidence of urinary tract infection among febrile children, particularly females and uncircumcised males.^{15,31,42,43}

Additionally, studies have demonstrated that urine dip and analysis are not sufficiently sensitive; a culture should always be obtained.^{15,32,44} One study demonstrated that up to 20 percent of febrile children with pyelonephritis lacked pyuria on initial urinalysis.⁴⁵ Urethral catheterization and suprapubic aspiration are preferred methods for obtaining urine specimens because of the high rates of contamination seen with bagged specimens.^{15,46}

STOOL TESTING

There are fewer data on stool testing than on other tests; most studies of febrile children did not require evaluation of stool. One study did find that the presence of five WBCs per high-power field was predictive of *Salmonella*

infection, including bacteremia in patients with diarrhea.³¹

LUMBAR PUNCTURE

Although the positive and negative predictive values of lumbar puncture have not been determined for SBI in the post-pneumococcal-vaccine era, the risk of bacterial meningitis is very low (0.03 to 0.10 percent) in children older than 28 days with a WBC count of less than 15,000 cells per mm³ who appear well.^{6,7,14,27,28,31,35,36} Some experts recommend that if empiric antibiotics are to be administered, a lumbar puncture should be performed to prevent a false-negative CSF culture should the child develop worsening signs of infection and need further evaluation.^{6,15}

CHEST RADIOGRAPHY

A meta-analysis of 617 febrile children up to three months of age and without pulmonary symptoms found that all had a normal chest radiograph. Therefore, chest radiography is only recommended in febrile children with pulmonary symptoms (e.g., cough, shortness of breath) or pulmonary findings noted on examination (e.g., tachypnea, hypoxia, grunting, flaring, retractions, stridor, rales, rhonchi wheezes).^{15,37} Chest radiography also should be considered in febrile children with a rectal temperature higher than 102.2°F and a WBC count of more than 20,000 cells per mm³ (20×10^9 per L) to rule out occult pneumonia.¹⁵

Recommended Management Strategies

The extent of evaluation, use of empiric antibiotics, need for more invasive tests (e.g., lumbar puncture), and the necessity of hospital admission all depend on the child's age, appearance, and risk factors based on the history and physical examination. There is a treatment approach for each group of patients that is consistent with guidelines from the American College of Emergency Physicians,^{6,15} Cincinnati Children's Hospital,^{29,38} and the Pediatric Research in Office Settings study.⁹

The rate of serious bacterial infection in febrile children is decreasing since the advent of *Haemophilus influenzae* type b and *Streptococcus pneumoniae* vaccines.

TOXIC-APPEARING CHILDREN AND INFANTS YOUNGER THAN 29 DAYS

Any toxic-appearing child, regardless of age, and any infant younger than 29 days should be admitted for administration of intravenous antibiotics after completion of a sepsis work-up. This work-up should include a complete blood cell (CBC) count with manual differential; blood cultures; lumbar puncture for cell counts, glucose, protein, and culture; and urinalysis with culture.^{6,15,29,38}

Laboratory evaluations for neonatal HSV infection also should be considered in patients with risk factors for infection. The highest risk factor for infection is maternal infection at the time of delivery.⁴⁷ Other risk factors include the use of fetal scalp electrodes; vaginal delivery; CSF pleocytosis; and skin, eye, or mouth lesions.^{33,48,49} However, because 64 percent of mothers with HSV infections are asymptomatic,⁴⁷ and because 95 to 98 percent of infant infections will present before 22 days of age,^{34,50} a low clinical threshold should be used to test for and treat neonatal HSV infection. If the neonate is not improving on antibiotic therapy, HSV infection should be considered.²⁹

LOW-RISK CHILDREN 29 TO 90 DAYS OF AGE

For low-risk children who are nontoxic in appearance, have a healthy history, and are under the care of a reliable adult, there are two management options supported by evidence.

Option One. A laboratory evaluation is performed. It should include a CBC count with manual differential, CSF analysis, and urinalysis with urine culture. If the WBC count is less than 15,000 cells per mm³ with an ANC less than 10,000 cells per mm³ and the CSF and urinalysis are normal, the child could be given ceftriaxone (Rocephin) 50 mg per kg intramuscularly and be brought back for a follow-up appointment in 24 hours. At the follow-up, results of blood and urine cultures and CSF studies should be evaluated, and the child should be reexamined to determine if a source of infection has become evident. A record of any new symptoms also should be made.^{6,15}

Option Two. A CBC count and urinalysis

with urine culture can be obtained without obtaining blood cultures, performing CSF studies, or administering antibiotics. The child should be carefully observed and should undergo close follow-up with reexamination within 24 hours. If the laboratory testing is positive, appropriate action needs to be taken.²⁹

LOW-RISK CHILDREN THREE TO 36 MONTHS OF AGE

Rectal Temperature Lower Than 102.2°F. The evidence supports that a low-risk child without an evident source of infection and a rectal temperature lower than 102.2°F can be discharged without laboratory testing or antibiotics, and should have a follow-up visit if symptoms worsen or fever persists for longer than 48 hours.^{6,15,29,38}

Rectal Temperature of 102.2°F or Higher. Guidelines from the Cincinnati Children's Hospital recommend that well-appearing children three to 36 months of age with a fever without an apparent source, who can receive excellent follow-up and who have completed their appropriate series of recommended vaccinations, may be considered for outpatient observation without initial laboratory testing or empiric antibiotics.³⁸ A second option is to perform a laboratory evaluation that includes a CBC count with differential and a urinalysis with urine culture. If the WBC count is more than 15,000 cells per mm³, or the ANC is more than 10,000 cells per mm³, then blood cultures should be obtained.^{6,15,38}

If the above evaluation does not provide a source for infection, the child should be reevaluated in 24 to 48 hours and could receive ceftriaxone 50 mg per kg intramuscularly. CSF studies should be performed before the administration of antibiotics; however, if no antibiotics are given, CSF studies are not necessary.^{6,15,38} See *Figure 1* for a summary of this approach.^{6,15,29,38}

Limitations

Several recent developments have prompted the need to reevaluate the recommended protocols for the evaluation and management of febrile children 36 months of age

Treatment of Child with Fever of Unidentifiable Source

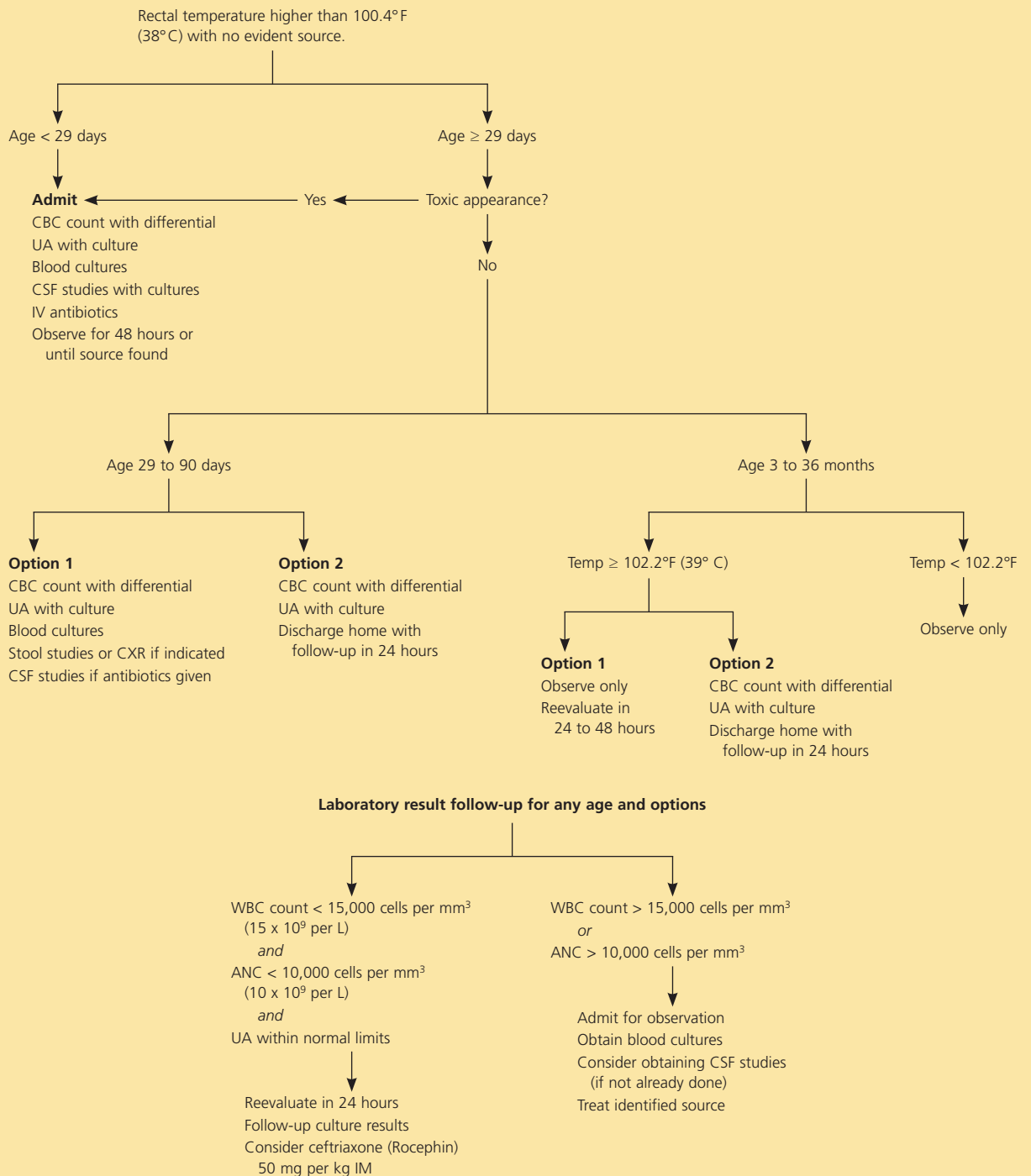


Figure 1. Algorithm for the treatment of a child with a rectal temperature higher than 100.4°F (38°C) with no evident source of fever. (CBC = complete blood cell; UA = urinalysis; CSF = cerebrospinal fluid; IV = intravenous; CXR = chest radiography; WBC = white blood cell; ANC = absolute neutrophil count; IM = intramuscular.)

Information from references 6, 15, 29, and 38.

or younger. These developments include the marked decrease in the incidence of *H. influenzae* type b infection through immunization and the recent release and widespread use of the conjugated pneumococcal vaccine. A 2001 cost-effectiveness analysis found that if the bacteremia rates fall below 0.5 percent, the strategies for diagnosing febrile children that use empiric testing and treatment should be eliminated.⁵¹ Thus, future recommendations for evaluation and management of the febrile child may change and could involve fewer tests and less presumptive treatment.

The Authors

DENISE K. SUR, MD, is an associate clinical professor and the vice chair for graduate medical education at the David Geffen School of Medicine, University of California, Los Angeles (UCLA). She also is the director of the UCLA family medicine residency program. Dr. Sur earned her medical degree from the University of California, Davis, School of Medicine, and completed a family medicine residency at Long Beach (Calif.) Memorial Medical Center.

ELISE L. BUKONT, DO, is a third-year resident in the UCLA family medicine residency program. She earned her medical degree from the Kansas City (Mo.) University of Medicine and Biosciences.

Address correspondence to Denise K. Sur, MD, University of California, Los Angeles, 1920 Colorado Ave., Santa Monica, CA 90404 (e-mail: dsur@mednet.ucla.edu). Reprints are not available from the authors.

Author disclosure: Nothing to disclose.

REFERENCES

- Nelson DS, Walsh K, Fleisher GR. Spectrum and frequency of pediatric illness presenting to a general community hospital emergency department. *Pediatrics* 1992;90(1 pt 1):5-10.
- Krauss BS, Harakal T, Fleisher GR. The spectrum and frequency of illness presenting to a pediatric emergency department. *Pediatr Emerg Care* 1991;7:67-71.
- Lee GM, Harper MB. Risk of bacteremia for febrile young children in the post-*Haemophilus influenzae* type b era. *Arch Pediatr Adolesc Med* 1998;152:624-8.
- Soman M. Characteristics and management of febrile young children seen in a university family practice. *J Fam Pract* 1985;21:117-22.
- Kadish HA, Loweridge B, Tobey J, Bolte RG, Corneli HM. Applying outpatient protocols in febrile infants 1-28 days of age: can the threshold be lowered? *Clin Pediatr (Phila)* 2000;39:81-8.
- Baraff LJ. Management of fever without source in infants and children. *Ann Emerg Med* 2000;36:602-14.
- Dagan R, Sofer S, Phillip M, Shachak E. Ambulatory care of febrile infants younger than 2 months of age classified as being at low risk for having serious bacterial infections. *J Pediatr* 1988;112:355-60.
- Bandyopadhyay S, Bergholte J, Blackwell CD, Friedlander JR, Hennes H. Risk of serious bacterial infection in children with fever without a source in the post-*Haemophilus influenzae* era when antibiotics are reserved for culture-proven bacteremia [Published correction appears in *Arch Pediatr Adolesc Med* 2002;156:749]. *Arch Pediatr Adolesc Med* 2002;156:512-7.
- Pantell RH, Newman TB, Bernzweig J, Bergman DA, Takayama JI, Segal M, et al. Management and outcomes of care of fever in early infancy. *JAMA* 2004;291:1203-12.
- Black S, Shinefield H, Baxter R, Austrian R, Bracken L, Hansen J, et al. Postlicensure surveillance for pneumococcal invasive disease after use of the heptavalent pneumococcal conjugate vaccine in Northern California Kaiser Permanente. *Pediatr Infect Dis J* 2004;23:485-9.
- Hsu K, Pelton S, Karumuri S, Heisey-Grove D, Klein J, for the Massachusetts Department of Public Health Epidemiologists. Population-based surveillance for childhood invasive pneumococcal disease in the era of conjugate vaccine. *Pediatr Infect Dis J* 2005;24:17-23.
- Whitney CG, Farley MM, Hadler J, Harrison LH, Bennett NM, Lynfield R, et al., for the Active Bacterial Core Surveillance of the Emerging Infections Program Network. Decline in invasive pneumococcal disease after the introduction of protein-polysaccharide conjugate vaccine. *N Engl J Med* 2003;348:1737-46.
- Kaplan SL, Mason EO Jr, Wald ER, Schutze GE, Bradley JS, Tan TQ, et al. Decrease of invasive pneumococcal infections in children among 8 children's hospitals in the United States after the introduction of the 7-valent pneumococcal conjugate vaccine. *Pediatrics* 2004;113(3 pt 1):443-9.
- Baraff LJ, Bass JW, Fleisher GR, Klein JO, McCracken GH Jr, Powell KR, et al. Practice guideline for the management of infants and children 0 to 36 months of age with fever without source. Agency for Health Care Policy and Research [Published correction appears in *Ann Emerg Med* 1993;22:1490]. *Ann Emerg Med* 1993;22:1198-210.
- American College of Emergency Physicians Clinical Policies Committee, American College of Emergency Physicians Clinical Policies Subcommittee on Pediatric Fever. Clinical policy for children younger than three years presenting to the emergency department with fever. *Ann Emerg Med* 2003;42:530-45.
- Baskin MN. The prevalence of serious bacterial infections by age in febrile infants during the first 3 months of life. *Pediatr Ann* 1993;22:462-6.
- Craig JV, Lancaster GA, Taylor S, Williamson PR, Smyth RL. Infrared ear thermometry compared with rectal thermometry in children: a systematic review. *Lancet* 2002;360:603-9.
- Craig JV, Lancaster GA, Williamson PR, Smyth RL. Temperature measured at the axilla compared with rectum in children and young people: a systematic review. *BMJ* 2000;320:1174-8.
- Jean-Mary MB, Dicanzio J, Shaw J, Bernstein HH. Limited accuracy and reliability of infrared axillary and aural thermometers in a pediatric outpatient population. *J Pediatr* 2002;141:671-6.
- Beckstrand RL, Wilshaw R, Moran S, Schaalje GB.

- Supralingual temperatures compared to tympanic and rectal temperatures. *Pediatr Nurs* 1996;22:436-8.
21. Zengeya ST, Blumenthal I. Modern electronic and chemical thermometers used in the axilla are inaccurate. *Eur J Pediatr* 1996;155:1005-8.
 22. Brennan DF, Falk JL, Rothrock SG, Kerr RB. Reliability of infrared tympanic thermometry in the detection of rectal fever in children. *Ann Emerg Med* 1995;25:21-30.
 23. Anbar RD, Richardson-de Corral V, O'Malley PJ. Difficulties in universal application of criteria identifying infants at low risk for serious bacterial infection. *J Pediatr* 1986;109:483-5.
 24. Bonadio WA, Hegenbarth M, Zachariason M. Correlating reported fever in young infants with subsequent temperature patterns and rate of serious bacterial infections. *Pediatr Infect Dis J* 1990;9:158-60.
 25. Kline MW, Lorin MI. Bacteremia in children afebrile at presentation to an emergency room. *Pediatr Infect Dis J* 1987;6:197-8.
 26. Powell KR. Evaluation and management of febrile infants younger than 60 days of age. *Pediatr Infect Dis J* 1990;9:153-7.
 27. Baker MD, Bell LM, Avner JR. Outpatient management without antibiotics of fever in selected infants. *N Engl J Med* 1993;329:1437-41.
 28. Baskin MN, O'Rourke EJ, Fleisher GR. Outpatient treatment of febrile infants 28 to 89 days of age with intramuscular administration of ceftriaxone. *J Pediatr* 1992;120:22-7.
 29. Cincinnati Children's Hospital Medical Center. Evidence-based care guidelines. Fever of uncertain source in infants 0 to 60 days. Accessed January 31, 2007, at: <http://www.cincinnatichildrens.org/svc/alpha/h/health-policy/ev-based/fever-0-60-days.htm>.
 30. Baker RC, Tiller T, Bausher JC, Bellet PS, Cotton WH, Finley AH, et al. Severity of disease correlated with fever reduction in febrile infants. *Pediatrics* 1989;83:1016-9.
 31. Jaskiewicz JA, McCarthy CA, Richardson AC, White KC, Fisher DJ, Dagan R, et al. Febrile infants at low risk for serious bacterial infection—an appraisal of the Rochester criteria and implications for management. Febrile Infant Collaborative Study Group. *Pediatrics* 1994;94:390-6.
 32. Hoberman A, Wald ER. Urinary tract infections in young febrile children. *Pediatr Infect Dis J* 1997;16:11-7.
 33. Kimberlin DW. Neonatal herpes simplex infection. *Clin Microbiol Rev* 2004;17:1-13.
 34. Koskiniemi M, Happonen JM, Jarvenpaa AL, Pettay O, Vaheri A. Neonatal herpes simplex virus infection: a report of 43 patients. *Pediatr Infect Dis J* 1989;8:30-5.
 35. Broner CW, Polk SA, Sherman JM. Febrile infants less than eight weeks old. Predictors of infection. *Clin Pediatr (Phila)* 1990;29:438-43.
 36. Chiu CH, Lin TY, Bullard MJ. Identification of febrile neonates unlikely to have bacterial infections. *Pediatr Infect Dis J* 1997;16:59-63.
 37. Bramson RT, Meyer TL, Silbiger ML, Blickman JG, Halpern E. The futility of the chest radiograph in the febrile infant without respiratory symptoms. *Pediatrics* 1993;92:524-6.
 38. Cincinnati Children's Hospital. Evidence-based care guidelines. Fever of uncertain source 2 - 36 months. Accessed January 31, 2007, at: <http://www.cincinnatichildrens.org/svc/alpha/h/health-policy/ev-based/fever-2-36-months.htm>.
 39. Kuppermann N, Fleisher G, Jaffe DM. Predictors of occult pneumococcal bacteremia in young febrile children. *Ann Emerg Med* 1998;31:679-87.
 40. Baker MD, Bell LM. Unpredictability of serious bacterial infections in febrile infants from birth to 1 month of age. *Arch Pediatr Adolesc Med* 1999;153:508-11.
 41. Kuppermann N. Occult bacteremia in young febrile children. *Pediatr Clin North Am* 1999;46:1073-109.
 42. Shaw KN, Gorelick M, McGowan KL, Yakscoe NM, Schwartz JS. Prevalence of urinary tract infection in febrile young children in the emergency department. *Pediatrics* 1998;102:e16.
 43. Hoberman A, Chao HP, Keller DM, Hickey R, Davis HW, Ellis D. Prevalence of urinary tract infection in febrile infants. *J Pediatr* 1993;123:17-23.
 44. Hoberman A, Wald ER, Penchansky L, Reynolds EA, Young S. Enhanced urinalysis as a screening test for urinary tract infection. *Pediatrics* 1993;91:1196-9.
 45. Hoberman A, Wald ER, Reynolds EA, Penchansky L, Charron M. Is urine culture necessary to rule out urinary tract infection in young febrile children? *Pediatr Infect Dis J* 1996;15:304-9.
 46. American Academy of Pediatrics. Committee on Quality Improvement. Subcommittee on Urinary Tract Infection. Practice parameter: the diagnosis, treatment, and evaluation of the initial urinary tract infection in febrile infants and young children [Published corrections appear in *Pediatrics* 2000;105(1 pt 1):141; *Pediatrics* 1999;103(5 pt 1):1052; and *Pediatrics* 1999;104(1 pt 1):118]. *Pediatrics* 1999;103(4 pt 1):843-52.
 47. Brown ZA, Selke S, Zeh J, Kopelman J, Maslow A, Ashley RL, et al. The acquisition of herpes simplex virus during pregnancy. *N Engl J Med* 1997;337:509-15.
 48. Brown ZA, Wald A, Morrow RA, Selke S, Zeh J, Corey L. Effect of serologic status and cesarean delivery on transmission rates of herpes simplex virus from mother to infant. *JAMA* 2003;289:203-9.
 49. Kimberlin D. Herpes simplex virus, meningitis, and encephalitis in neonates. *Herpes* 2004;11(suppl 2):65A-76A.
 50. Sullivan-Bolyai JZ, Hull HF, Wilson C, Smith AL, Corey L. Presentation of neonatal herpes simplex virus infections: implications for a change in therapeutic strategy. *Pediatr Infect Dis* 1986;5:309-14.
 51. Lee GM, Fleisher GR, Harper MB. Management of febrile children in the age of the conjugate pneumococcal vaccine: a cost-effectiveness analysis. *Pediatrics* 2001;108:835-44.