

Update on the Evaluation and Management of Functional Dyspepsia

RYAN A. LOYD, MD, and DAVID A. McCLELLAN, MD, *Texas A&M Health Science Center College of Medicine, Bryan, Texas*

Dyspepsia affects up to 40 percent of adults each year and is often diagnosed as functional (nonulcer) dyspepsia. The defining symptoms are postprandial fullness, early satiation, or epigastric pain or burning in the absence of causative structural disease. These symptoms may coexist with symptoms of functional gastrointestinal disorders, such as gastroesophageal reflux and irritable bowel syndrome, as well as anxiety and depression. The history and physical examination can help identify other possible causes of the symptoms. Warning signs of serious disease, such as cancer, are unintended weight loss, progressive dysphagia, persistent vomiting, evidence of gastrointestinal bleeding, and a family history of cancer. In these cases, more extensive laboratory investigation, imaging, and endoscopy should be considered as clinically indicated. During the initial evaluation, a test-and-treat strategy to identify and eradicate *Helicobacter pylori* infection is more effective than empiric treatment and more cost-effective than initial endoscopy. Eradication of *H. pylori* helps one out of 15 patients with functional dyspepsia diagnosed by endoscopy, but may not be cost-effective. Treatment options that may be beneficial for functional dyspepsia include histamine H₂ blockers, proton pump inhibitors, and prokinetic agents. Although psychotropic medications and psychological interventions have no proven benefit in patients with functional dyspepsia, they are appropriate for treating common psychiatric comorbidities. (*Am Fam Physician*. 2011;83(5):547-552. Copyright © 2011 American Academy of Family Physicians.)

► **Patient information:** A handout on dyspepsia, written by the authors of this article, is provided on page 554.

Dyspepsia affects up to 40 percent of adults each year, and about 10 percent of those affected seek medical care.¹ Most cases in patients who seek care are eventually diagnosed as functional dyspepsia.² Functional (nonulcer) dyspepsia is defined as the presence of postprandial fullness, early satiation, or epigastric pain or burning in the absence of causative structural disease (*Table 1*).^{3,4}

Recent guidelines distinguish dyspepsia from heartburn and gastroesophageal reflux symptoms, which often coincide with dyspepsia but are considered separate entities.⁵ Previous studies have used a variety of definitions for dyspepsia. As a result, further research is needed to better differentiate functional dyspepsia from other diseases of the gastrointestinal (GI) tract. To facilitate this research, the Rome III diagnostic



ILLUSTRATION BY EINDHATTON

criteria divide functional dyspepsia into two subcategories: epigastric pain syndrome (i.e., epigastric pain or burning) and postprandial distress syndrome (i.e., postprandial fullness or early satiation).³

Pathophysiology

There is no definitive pathophysiologic mechanism for functional dyspepsia, which suggests that it is a heterogeneous group of disorders. Patients with functional dyspepsia commonly have coexisting symptoms of irritable bowel syndrome or other functional GI disorders.⁶ In one 10-year follow-up study of patients with dyspepsia or irritable bowel syndrome, 40 percent of symptomatic patients switched subgroups over the study period.⁷

Several studies implicate gastric dysmotility in the pathophysiology of functional dyspepsia.⁸⁻¹² Many patients experience

SORT: KEY RECOMMENDATIONS FOR PRACTICE

Clinical recommendations	Evidence rating	References	Comments
Physicians should proceed directly to endoscopy in patients with dyspepsia who have warning signs (e.g., unintended weight loss, progressive dysphagia, persistent vomiting, evidence of gastrointestinal bleeding, family history of cancer) or who are older than 55 years.	C	5	Consensus, expert opinion, usual practice
In patients with isolated dyspepsia who do not exhibit warning signs, a test-and-treat strategy for <i>Helicobacter pylori</i> infection is effective and less expensive than initial endoscopy.	A	21	Meta-analysis
Histamine H ₂ blockers and proton pump inhibitors reduce functional dyspepsia symptoms, although the effect is small.	A	24	Meta-analysis
The prokinetic agent metoclopramide (Reglan) may be effective in treating functional dyspepsia, although the data are limited.	B	24	Meta-analysis of lower-quality studies
Eradication of <i>H. pylori</i> is somewhat effective in reducing symptoms of endoscopically confirmed functional dyspepsia, although it may not be cost-effective.	A	27	Meta-analysis

A = consistent, good-quality patient-oriented evidence; B = inconsistent or limited-quality patient-oriented evidence; C = consensus, disease-oriented evidence, usual practice, expert opinion, or case series. For information about the SORT evidence rating system, go to <http://www.aafp.org/afpsort.xml>.

motility-related symptoms, such as bloating, early satiation, nausea, and vomiting. Studies have documented altered gastric motility (e.g., gastroparesis, gastric dysrhythmias, abnormal fundus accumulation, pyloric sphincter dysfunction) in up to 80 percent of patients with functional dyspepsia.^{8,9} However, the degree of dysmotility does not correlate with symptoms.⁸⁻¹²

Because many patients with functional dyspepsia have burning pain that is indistinguishable from ulcer-related dyspepsia, the relationship between functional

dyspepsia and acid secretion is unclear. One study demonstrated a lower pH level in the duodenum of patients with functional dyspepsia compared with those in the control group, although the pH level did not correlate with symptoms.¹³ The role of *Helicobacter pylori* infection in functional dyspepsia has also been investigated. Large population studies have shown an increased incidence of *H. pylori* infection in patients with functional dyspepsia; however, given the high incidence of both conditions in the general population and the minimal response to treatment, the significance of the association is unclear.^{1,14} In spite of this uncertainty, testing for and treating *H. pylori* infection have become integral to the diagnostic management of functional dyspepsia.

Table 1. Rome III Diagnostic Criteria for Functional Dyspepsia

Presence of at least one of the following:

- Bothersome postprandial fullness
 - Early satiation
 - Epigastric pain
 - Epigastric burning
- and

No evidence of structural disease (including at upper endoscopy) that is likely to explain the symptoms

NOTE: Criteria must be fulfilled for the past three months, with symptom onset at least six months before diagnosis.

Information from references 3 and 4.

Diagnostic Approach

Functional dyspepsia is a diagnosis of exclusion; therefore, physicians should focus on excluding serious or specifically treatable diseases, without spending too much time investigating symptoms. Dyspepsia has a broad and diverse differential diagnosis (Table 2¹⁵⁻¹⁸), including functional dyspepsia, peptic ulcer disease, reflux esophagitis, and gastric or esophageal malignancy. Functional dyspepsia is the most prevalent diagnosis, making up 70 percent of dyspepsia cases.¹⁵

The physician should perform a detailed history and physical examination at the initial presentation, noting any findings that point to a diagnosis other than

functional dyspepsia (e.g., right upper-quadrant pain with cholelithiasis, exercise association with coronary artery disease, radiation to the back with pancreatitis). *Table 3* includes medications and other agents commonly associated with dyspepsia.¹⁹ Because the differential diagnosis is broad, the workup can range from empiric therapy to extensive laboratory and imaging studies. *Figure 1* is an algorithm for the evaluation and treatment of patients with dyspepsia.^{5,19}

History and physical examination alone have low sensitivity and specificity for predicting which patients with dyspepsia will have organic disease discovered on esophagogastroduodenoscopy.^{15,20} Because of this inaccuracy, the high incidence of normal endoscopic findings, and the very low incidence of malignancy, it is desirable to try empiric treatment before invasive and expensive diagnostic testing.

Several strategies have been suggested for initial management of uninvestigated dyspepsia, including a trial of acid suppressants, a test-and-treat approach (for *H. pylori* infection), and early endoscopy. A Cochrane review found that in the absence of warning signs for serious disease, a test-and-treat strategy is effective and cheaper than initial endoscopy.²¹ Initial endoscopy has been shown to provide a small reduction in the risk of recurrent dyspepsia symptoms; however, physicians need to weigh the cost of endoscopy against patient preference for early reassurance and symptom reduction.²¹ The Cochrane review showed the test-and-treat strategy to be slightly more effective than empiric acid suppressants, although the comparative cost-effectiveness of these strategies has not been established.²¹ Physicians can diagnose *H. pylori* infection with non-invasive tests, such as serologic, stool antigen, or urea breath tests. Serologic testing is the most common because of its wide availability and low cost, although urea breath testing is more accurate.²²

In patients 55 years or younger, the American Gastroenterological Association (AGA) identifies several warning signs that should trigger an early, aggressive workup (e.g., unintended weight loss, progressive dysphagia, persistent vomiting, evidence of GI

bleeding, family history of cancer).⁵ The AGA recommends proceeding directly to endoscopy in patients with warning signs and in those older than 55 years⁵; however, there has been debate about a lower cutoff age of 35 to 45 years in men.²³ Although it is not addressed in

Table 2. Differential Diagnosis of Dyspepsia

<i>Diagnostic category</i>	<i>Approximate prevalence*</i>
Functional (nonulcer) dyspepsia	Up to 70 percent
Peptic ulcer disease	15 to 25 percent
Reflux esophagitis	5 to 15 percent
Gastric or esophageal cancer	< 2 percent
Abdominal cancer, especially pancreatic cancer	Rare
Biliary tract disease	Rare
Carbohydrate malabsorption (lactose, sorbitol, fructose, mannitol)	Rare
Gastroparesis	Rare
Hepatoma	Rare
Infiltrative diseases of the stomach (Crohn disease, sarcoidosis)	Rare
Intestinal parasites (<i>Giardia</i> species, <i>Strongyloides</i> species)	Rare
Ischemic bowel disease	Rare
Medication effects (Table 3)	Rare
Metabolic disturbances (hypercalcemia, hyperkalemia)	Rare
Pancreatitis	Rare
Systemic disorders (diabetes mellitus, thyroid and parathyroid disorders, connective tissue disease)	Rare

*—Based on the occurrence of the disorders in patients with dyspepsia who are evaluated with endoscopy.

Information from references 15 through 18.

Table 3. Agents Commonly Associated with Dyspepsia

Acarbose (Precose)	Metformin (Glucophage)
Alcohol	Miglitol (Glyset)
Antibiotics, oral (e.g., erythromycin)	Nonsteroidal anti-inflammatory drugs, including cyclooxygenase-2 inhibitors
Bisphosphonates	Opiates
Corticosteroids (e.g., prednisone)	Orlistat (Xenical)
Herbs (e.g., garlic, ginkgo, saw palmetto, feverfew, chaste tree berry, white willow)	Potassium chloride
Iron	Theophylline

Adapted from Dickerson LM, King DE. Evaluation and management of nonulcer dyspepsia. *Am Fam Physician.* 2004;70(1):109.

Functional Dyspepsia

the AGA guidelines, an initial complete blood count may be appropriate to screen for anemia. The AGA guidelines do not address laboratory testing and imaging; however, it is reasonable to consider these approaches in patients with negative esophagogastroduodenoscopy findings and warning signs, or if the treatment course is unsuccessful.

Treatment

Treatment of functional dyspepsia can be frustrating for physicians and patients because few treatment options have proven effective. Patients will need continued reassurance and support from their physicians. Treatment is generally aimed at one of the presumed underlying etiologies of functional dyspepsia.

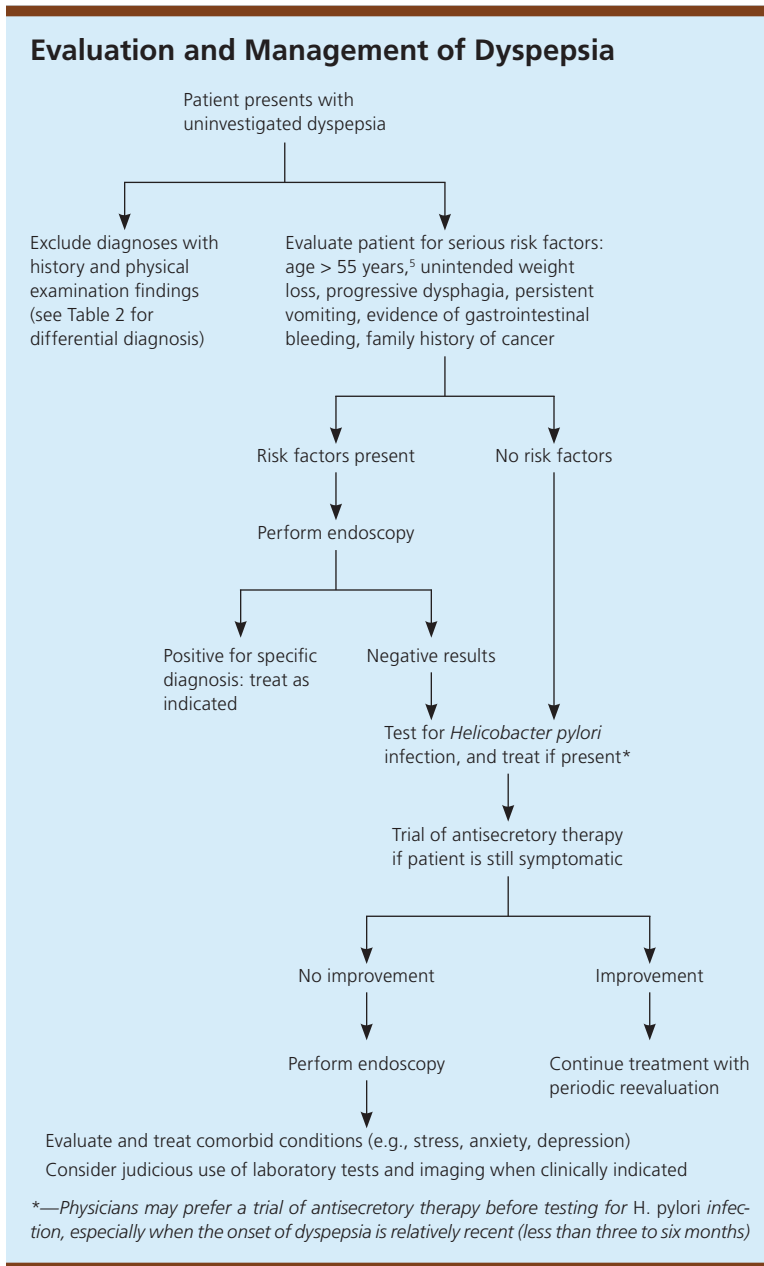


Figure 1. Algorithm for the evaluation and management of dyspepsia.

Adapted from Dickerson LM, King DE. Evaluation and management of nonulcer dyspepsia. *Am Fam Physician.* 2004;70(1):110, with additional information from reference 5.

GASTRIC ACID SUPPRESSION

Gastric acid suppressants have been studied extensively in the treatment of functional dyspepsia. Although their benefit in patients with ulcer-related dyspepsia or gastroesophageal reflux disease is considerable, the benefit in patients with functional dyspepsia is less clear. Antacids, sucralfate (Carafate), and misoprostol (Cytotec) have been evaluated in limited studies without evidence of benefit.²⁴ Bismuth salts showed some benefit compared with placebo in a meta-analysis; however, the studies that showed benefit were not well designed and involved only patients with *H. pylori* infection, with intent to eradicate the infection. Because of the questionable benefit and long-term risk of neurotoxicity, bismuth salts cannot be recommended as first-line agents for functional dyspepsia.²⁴

Histamine H₂ blockers are more promising agents for treating functional dyspepsia and have been evaluated in multiple trials. A meta-analysis concluded that H₂ blockers significantly improve symptoms; however, there was evidence of some publication bias, and the effect may have been overestimated, especially in comparison with proton pump inhibitors.²⁴ Studies of proton pump inhibitors have shown a statistically significant improvement in symptoms of functional dyspepsia compared with placebo. These studies were of better quality than those investigating H₂ blockers, making it difficult to compare relative effectiveness.²⁴ Given the small benefit of gastric acid suppressants and the commonly chronic nature of functional dyspepsia symptoms, physicians must consider the cost and long-term safety profile of the medication chosen for initial treatment.

PROKINETICS

Many patients with functional dyspepsia report predominant symptoms of bloating, early satiation, nausea, and vomiting. As a result, physicians have tried targeting treatment at improving GI motility. Multiple randomized controlled trials have demonstrated that prokinetic agents are effective in treating functional dyspepsia.²⁴ However, the quality of these studies is questionable, and the effectiveness of the agents may have been overestimated. The trials showing effectiveness tended to be targeted at patients with symptoms suggestive of motility disorders, raising the question of their effectiveness in cases of isolated epigastric pain. Also, most studies showing effectiveness used cisapride, which has since been removed from the U.S. market because of concerns about cardiac arrhythmias.²⁴ One study has shown that domperidone is effective for functional dyspepsia.²⁴ Domperidone is relatively safe, but has not been approved for use in the United States.

The only available prokinetic agents in the United States are metoclopramide (Reglan) and erythromycin, for which the evidence is sparse. Metoclopramide may cause tardive dyskinesia and parkinsonian symptoms in older persons, limiting its use.²⁴ Erythromycin has some prokinetic effects and is used to treat gastroparesis. However, erythromycin has not been studied as a treatment for functional dyspepsia, so its effectiveness is unknown. There is some initial evidence to suggest that herbal formulations containing peppermint improve functional dyspepsia symptoms, possibly through effects on the smooth muscle of the intestines.^{25,26} However, peppermint formulations available in the United States have not been well studied, and more research is needed.

H. PYLORI ERADICATION

H. pylori eradication may be beneficial as an initial strategy for management of uninvestigated dyspepsia before endoscopy. Several meta-analyses have examined eradication therapy in patients with endoscopically confirmed functional dyspepsia.¹⁹ Although there have been some discrepancies between studies, the most recent meta-analysis showed a small but statistically significant improvement in functional dyspepsia symptoms with *H. pylori* eradication.²⁷ The number needed to treat for one patient to have relief of symptoms is 15. It is not known whether this strategy is cost-effective.^{22,27}

PSYCHOTROPIC AND PSYCHOLOGICAL INTERVENTIONS

Because of the high rate of coexisting depression and psychiatric illness in patients with refractory functional dyspepsia, many physicians prescribe antidepressants.

However, there are only limited studies with a lack of randomized controlled trials supporting this strategy. A meta-analysis showed that tricyclic antidepressants significantly improved functional GI disorders, but the review did not isolate functional dyspepsia from other functional GI disorders, such as irritable bowel syndrome and heartburn.²⁸ A small crossover study found that low-dose amitriptyline improved functional dyspepsia symptoms; however, it included only 14 patients and lasted only one month.²⁹ A larger study of children with irritable bowel syndrome, functional abdominal pain, or functional dyspepsia showed no improvement with amitriptyline versus placebo.³⁰ More trials are underway that may elucidate the use of tricyclic antidepressants in patients with functional dyspepsia.³¹

There is a high rate of coexisting depression and psychiatric illness in patients with refractory functional dyspepsia.

Four randomized controlled trials investigated the use of psychological interventions in patients with dyspepsia symptoms.³² Because each trial evaluated a different intervention (i.e., psychotherapy, psychodrama, cognitive behavior therapy, relaxation therapy, and hypnosis), no meta-analysis was possible. Additionally, because of the poor quality of these trials, there was insufficient evidence to recommend these interventions for treatment of dyspepsia. However, these methods can still be used to treat common psychiatric comorbidities.

Data Sources: A search was completed in PubMed and the Cochrane Database of Systematic Reviews using the following keywords: nonulcer/functional, nonulcer + dyspepsia ± cause, evaluation, treatment, and *Helicobacter pylori*. Search date: April 1, 2010.

The Authors

RYAN A. LOYD, MD, is an assistant professor of family and community medicine, and director of global health for the Family Medicine Residency at the Texas A&M Health Science Center College of Medicine in Bryan, Tex.

DAVID A. McCLELLAN, MD, is an assistant professor of family and community medicine, and director of the Family Medicine Residency at the Texas A&M Health Science Center College of Medicine.

Address correspondence to Ryan A. Loyd, MD, Texas A&M Health Science Center College of Medicine, 1301 Memorial Dr., Ste. 200, Bryan, TX 77802 (e-mail: loyd@medicine.tamhsc.edu). Reprints are not available from the authors.

Author disclosure: Nothing to disclose.

REFERENCES

- McNamara DA, Buckley M, O'Morain CA. Nonulcer dyspepsia. Current concepts and management. *Gastroenterol Clin North Am.* 2000;29(4):807-818.

Functional Dyspepsia

- McQuaid K. Dyspepsia. In: Feldman M, Friedman LS, Sleisenger MH. *Sleisenger & Fordtran's Gastrointestinal and Liver Disease: Pathophysiology, Diagnosis, Management*. 7th ed. Philadelphia, Pa.: Saunders; 2002:102-103.
- Tack J, Talley NJ, Camilleri M, et al. Functional gastroduodenal disorders [published correction appears in *Gastroenterology*. 2006;131(1):336]. *Gastroenterology*. 2006;130(5):1466-1479.
- Drossman DA, Corazziari E, Delvaux M, et al. *Rome III: The Functional Gastrointestinal Disorders*. 3rd ed. McLean, Va.: Degnon Associates; 2006. http://theromefoundation.org/assets/pdf/19_Romelll_apA_885-898.pdf. Accessed June 15, 2010.
- Talley NJ. American Gastroenterological Association medical position statement: evaluation of dyspepsia. *Gastroenterology*. 2005;129(5):1753-1755.
- Kaji M, Fujiwara Y, Shiba M, et al. Prevalence of overlaps between GERD, FD and IBS and impact on health-related quality of life. *J Gastroenterol Hepatol*. 2010;25(6):1151-1156.
- Ford AC, Forman D, Bailey AG, Axon AT, Moayyedi P. Fluctuation of gastrointestinal symptoms in the community: a 10-year longitudinal follow-up study. *Aliment Pharmacol Ther*. 2008;28(8):1013-1020.
- Sha W, Pasricha PJ, Chen JD. Correlations among electrogastrogram, gastric dysmotility, and duodenal dysmotility in patients with functional dyspepsia. *J Clin Gastroenterol*. 2009;43(8):716-722.
- Sha W, Pasricha PJ, Chen JD. Rhythmic and spatial abnormalities of gastric slow waves in patients with functional dyspepsia. *J Clin Gastroenterol*. 2009;43(2):123-129.
- Mizushima T, Sawa K, Ochi K, et al. Gastrointestinal motility is not coordinated in patients with non-ulcer dyspepsia of normal gastric emptying time: simultaneous sonographic study. *J Gastroenterol Hepatol*. 2005;20(6):910-914.
- Lin X, Levanon D, Chen JD. Impaired postprandial gastric slow waves in patients with functional dyspepsia. *Dig Dis Sci*. 1998;43(8):1678-1684.
- Lin Z, Eaker EY, Sarosiek I, McCallum RW. Gastric myoelectrical activity and gastric emptying in patients with functional dyspepsia. *Am J Gastroenterol*. 1999;94(9):2384-2389.
- Bratten J, Jones MP. Prolonged recording of duodenal acid exposure in patients with functional dyspepsia and controls using a radiotelemetry pH monitoring system. *J Clin Gastroenterol*. 2009;43(6):527-533.
- Armstrong D. *Helicobacter pylori* infection and dyspepsia. *Scand J Gastroenterol Suppl*. 1996;215:38-47.
- Value of the unaided clinical diagnosis in dyspeptic patients in primary care. *Am J Gastroenterol*. 2001;96(5):1417-1421.
- Bazaldúa OV, Schneider FD. Evaluation and management of dyspepsia. *Am Fam Physician*. 1999;60(6):1773-1784.
- Talley NJ, Silverstein MD, Agréus L, Nyrén O, Sonnenberg A, Holtmann G. AGA technical review: evaluation of dyspepsia. American Gastroenterological Association. *Gastroenterology*. 1998;114(3):582-595.
- Fisher RS, Parkman HP. Management of nonulcer dyspepsia. *N Engl J Med*. 1998;339(19):1376-1381.
- Dickerson LM, King DE. Evaluation and management of nonulcer dyspepsia. *Am Fam Physician*. 2004;70(1):107-114.
- Moayyedi P, Talley NJ, Fennerty MB, Vakil N. Can the clinical history distinguish between organic and functional dyspepsia? *JAMA*. 2006;295(13):1566-1576.
- Delaney B, Ford AC, Forman D, Moayyedi P, Qume M. Initial management strategies for dyspepsia. *Cochrane Database Syst Rev*. 2005;(4):CD001961.
- Ables AZ, Simon I, Melton ER. Update on *Helicobacter pylori* treatment. *Am Fam Physician*. 2007;75(3):351-358.
- Marmo R, Rotondano G, Piscopo R, et al. Combination of age and sex improves the ability to predict upper gastrointestinal malignancy in patients with uncomplicated dyspepsia: a prospective multicentre database study. *Am J Gastroenterol*. 2005;100(4):784-791.
- Moayyedi P, Soo S, Deeks J, Delaney B, Innes M, Forman D. Pharmacological interventions for non-ulcer dyspepsia. *Cochrane Database Syst Rev*. 2006;(4):CD001960.
- Kligler B, Chaudhary S. Peppermint oil. *Am Fam Physician*. 2007;75(7):1027-1030.
- Melzer J, Rösch W, Reichling J, Brignoli R, Saller R. Meta-analysis: phytotherapy of functional dyspepsia with the herbal drug preparation STW 5 (Iberogast). *Aliment Pharmacol Ther*. 2004;20(11-12):1279-1287.
- Moayyedi P, Soo S, Deeks J, et al. Eradication of *Helicobacter pylori* for non-ulcer dyspepsia. *Cochrane Database Syst Rev*. 2006;(2):CD002096.
- Jackson JL, O'Malley PG, Tomkins G, Balden E, Santoro J, Kroenke K. Treatment of functional gastrointestinal disorders with antidepressant medications: a meta-analysis. *Am J Med*. 2000;108(1):65-72.
- Mertz H, Fass R, Kodner A, Yan-Go F, Fullerton S, Mayer EA. Effect of amitriptyline on symptoms, sleep, and visceral perception in patients with functional dyspepsia. *Am J Gastroenterol*. 1998;93(2):160-165.
- Saps M, Youssef N, Miranda A, et al. Multicenter, randomized, placebo-controlled trial of amitriptyline in children with functional gastrointestinal disorders. *Gastroenterology*. 2009;137(4):1261-1269.
- Talley NJ, Herrick L, Locke GR. Antidepressants in functional dyspepsia. *Expert Rev Gastroenterol Hepatol*. 2010;4(1):5-8.
- Soo S, Moayyedi P, Deeks J, Delaney B, Lewis M, Forman D. Psychological interventions for non-ulcer dyspepsia. *Cochrane Database Syst Rev*. 2005;(2):CD002301.