

## Purpura and Cough

RICHARD TEMPLE, CDR, MC, USN, and NATE HEMERLY, LT, MC, USN, *Naval Hospital Camp Lejeune, Jacksonville, North Carolina*

The editors of *AFP* welcome submissions for Photo Quiz. Guidelines for preparing and submitting a Photo Quiz manuscript can be found in the Authors' Guide at <http://www.aafp.org/afp/photoquizinfo>. To be considered for publication, submissions must meet these guidelines. E-mail submissions to [afpphoto@aafp.org](mailto:afpphoto@aafp.org). Contributing editor for Photo Quiz is John E. Delzell, Jr., MD, MSPH.

A collection of Photo Quizzes published in *AFP* is available at <http://www.aafp.org/afp/photoquiz>.

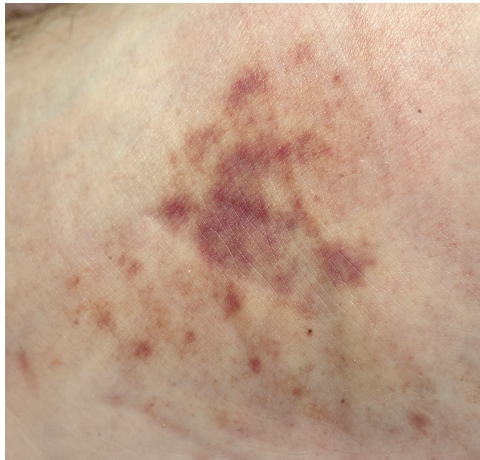


Figure 1.

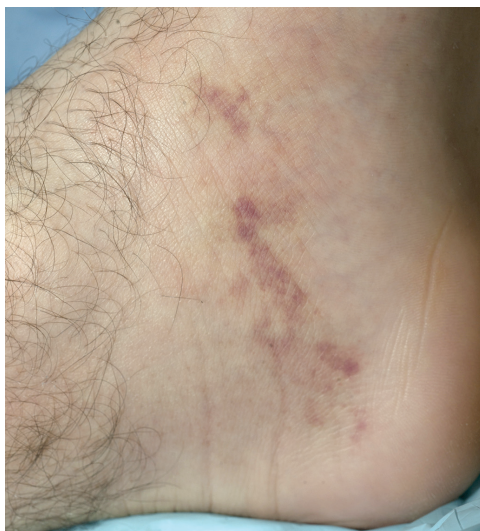


Figure 2.

A 21-year-old man presented with fever, cough, arthralgias, and bilateral lower extremity rash and swelling that began 24 hours earlier. He had no history of asthma or seasonal allergies. He was not sexually active. He did not have a history of tick exposure or genitourinary symptoms.

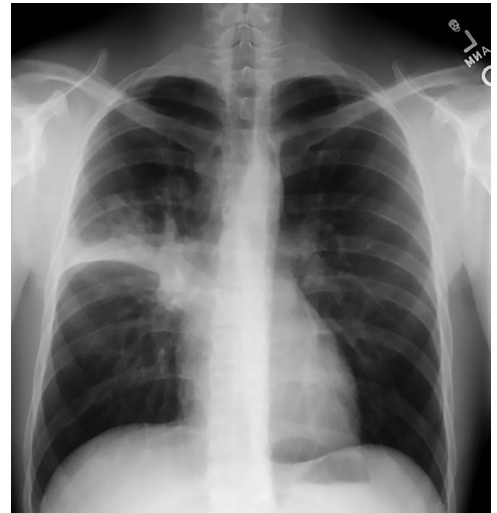


Figure 3.

On physical examination, he had a fever of 102°F (38.9°C) and a rash on both feet (*Figures 1 and 2*). The rash was erythematous, purpuric, and palpable. His white blood cell count was 10,500 per mm<sup>3</sup> ( $10.5 \times 10^9$  per L) without eosinophilia. Platelet and red blood cell counts were normal. A urinalysis showed a trace amount of blood but no red blood cells, casts, or protein. Antineutrophil cytoplasmic antibody study results were negative. Chest radiography was performed (*Figure 3*).

### Question

Based on the patient's history, physical examination, and radiography findings, which one of the following is the most likely diagnosis?

- A. Churg-Strauss syndrome.
- B. Erythema multiforme.
- C. Erythema nodosum.
- D. Leukocytoclastic (hypersensitivity) vasculitis.

See the following page for discussion.

Summary Table

Condition	Characteristics	Causes/associated findings
Churg-Strauss syndrome	Palpable purpura, nodules, and ulcers on the lower extremities	Asthma, allergic rhinitis, eosinophilic pulmonary infiltrates, peripheral eosinophilia
Erythema multiforme	Symmetric target lesions on the hands and feet that are 1 to 3 cm in diameter; mucosal involvement is common	Herpes simplex virus, <i>Mycoplasma pneumoniae</i> , or upper respiratory tract infection
Erythema nodosum	Confined to extensor surfaces of the upper and lower extremities; erythematous, tender nodules that are 1 to 10 cm in diameter	Beta-hemolytic streptococcal infection, other bacterial and fungal infections, pregnancy, medication use, systemic illness
Leukocytoclastic (hypersensitivity) vasculitis	Palpable purpura on the lower extremities; may be pruritic and painful	Infection, connective tissue disorder, medication use

Discussion

The answer is D: leukocytoclastic vasculitis, which is also called hypersensitivity vasculitis. This is a small vessel vasculitis characterized by palpable purpura on the lower extremities.<sup>1</sup> Lesions may be pruritic and painful and typically last weeks to months. The condition is recurrent in up to 10% of patients.<sup>2</sup> Associated symptoms include fever, fatigue, myalgias, and migratory arthralgias.<sup>2</sup> It may be preceded by infection, medication exposure, connective tissue disorder, or malignancy; however, 50% of cases are idiopathic.<sup>1</sup>

Initial diagnostic workup focuses on excluding infectious, rheumatologic, or malignant causes. Hepatitis C (19%) and hepatitis B (5%) are commonly associated infections.<sup>1</sup> Medication use may cause up to 10% of cases, and symptoms typically manifest seven to 21 days after exposure. Penicillins, sulfonamides, quinolones, allopurinol (Zyloprim), and thiazides have been implicated.<sup>1</sup> Rheumatoid arthritis, Sjögren syndrome, and lupus erythematosus are associated with leukocytoclastic vasculitis. Malignancy from any type of cancer can cause the condition, although it is uncommon. Treatment of the underlying condition or withdrawal of the offending agent is recommended; idiopathic cases can be treated symptomatically with antihistamines, nonsteroidal anti-inflammatory drugs, and steroids.<sup>3</sup>

Churg-Strauss syndrome is a small vessel vasculitis that affects males 15 to 70 years of age.<sup>3</sup> Patients develop palpable purpura, nodules, and ulcers on the lower extremities.<sup>3</sup> The disease is associated with asthma, allergic rhinitis, eosinophilic pulmonary infiltrates, peripheral eosinophilia, and antineutrophil cytoplasmic antibodies.<sup>3,4</sup>

Erythema multiforme is a hypersensitivity syndrome characterized by target lesions with symmetric

distribution on the hands and feet that may spread toward the trunk. The lesions may display a middle zone of pale edema and outer zone of erythema forming the “iris” target lesion, which is 1 to 3 cm in diameter.<sup>1</sup> Mucosal lesions occur in 70% of cases.<sup>1</sup> The condition is commonly associated with herpes simplex virus, *Mycoplasma pneumoniae*, and upper respiratory tract infections, although the cause is unknown in 50% of cases.<sup>1</sup>

Erythema nodosum is a hypersensitivity reaction involving the extensor surfaces of the upper and lower extremities. It is characterized by erythematous, tender, nodules that are 1 to 10 cm in diameter.<sup>5</sup> The condition is associated with fungal and bacterial infections, pregnancy, medication use, and systemic illnesses (e.g., sarcoidosis, inflammatory bowel disease, Hodgkin disease); however, approximately 55% of cases are idiopathic.<sup>5</sup> Beta-hemolytic streptococcal infections cause 44% of adult cases with an identifiable cause.<sup>5</sup>

Address correspondence to Richard Temple, CDR, MC, USN, at richard.temple@med.navy.mil. Reprints are not available from the authors.

Author disclosure: No relevant financial affiliations.

The views expressed in this article are those of the authors and do not necessarily reflect the official policy or position of the Department of the Navy, Department of Defense, or the U.S. government.

REFERENCES

- Habif TP. *Clinical Dermatology*. 5th ed. Edinburgh, Scotland: Mosby Elsevier; 2010.
- Jennette JC, Falk RJ. Small-vessel vasculitis. *N Engl J Med*. 1997;337(21):1512-1523.
- Sharma P, Sharma S, Baltaro R, Hurley J. Systemic vasculitis. *Am Fam Physician*. 2011;83(5):556-565.
- Mansi IA, Opran A, Rosner F. ANCA-associated small-vessel vasculitis. *Am Fam Physician*. 2002;65(8):1615-1620.
- Schwartz RA, Nervi SJ. Erythema nodosum: a sign of systemic disease. *Am Fam Physician*. 2007;75(5):695-700. ■