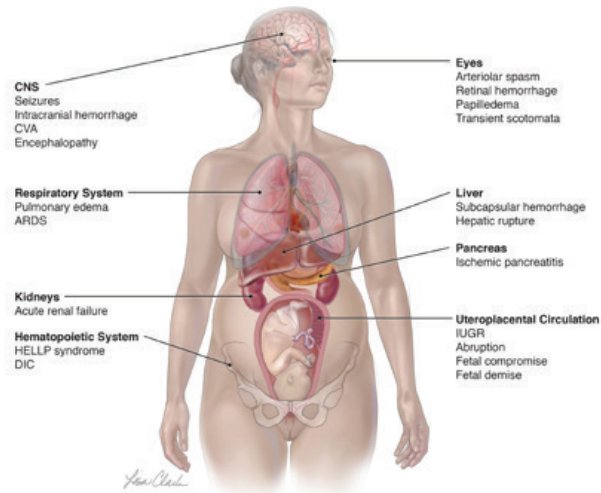


Preeclampsia With Severe Features

- New onset headache**
- Visual disturbances**
- Pulmonary edema**
- Hepatic dysfunction**
 - Transaminase 2X normal
 - Right upper quadrant (RUQ) or epigastric pain
- Elevated creatinine**
(> 1.1 mg/dL or 2X baseline)
- Systolic BP \geq 160 mm Hg**
- Diastolic BP \geq 110 mm Hg**
- Platelets <100,000/ μ L**



Management of Preeclampsia With Severe Features With Magnesium Sulfate:

- 4-6 g IV loading dose infused over 20 minutes, followed by maintenance infusion of 1-2 g/hour**
- Monitor serum magnesium levels if:**
 - Creatinine \geq 0.9 mg/dL
 - Urine output <30 mL/hour
 - Loss of patellar reflexes
 - Other symptoms of magnesium toxicity