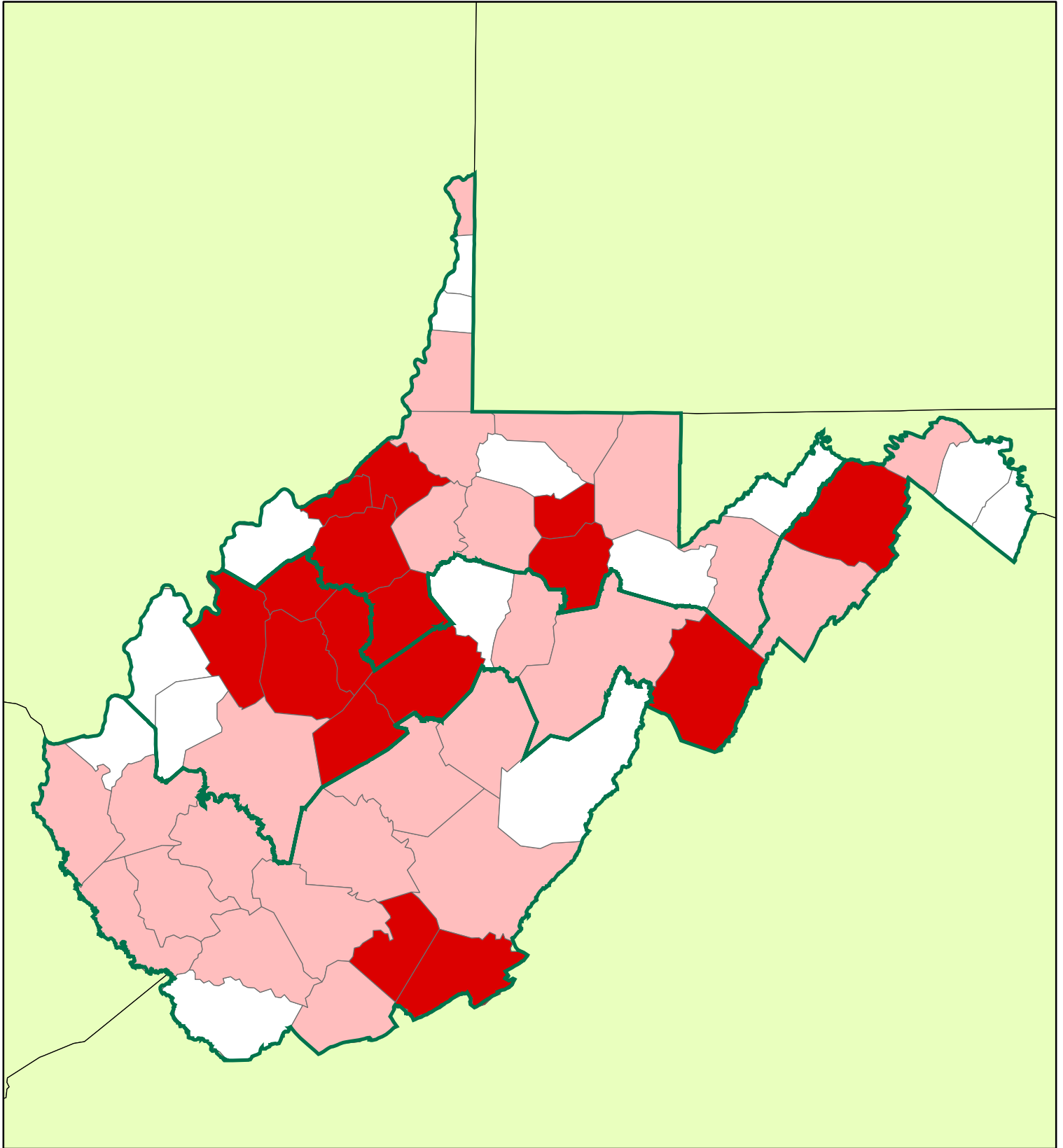


WEST VIRGINIA: PRIMARY CARE HEALTH PROFESSIONAL SHORTAGE AREAS



109th Congressional District

2002 County HPSA Status

- Full Primary Care HPSA
- Partial Primary Care HPSA
- Not a Primary Care HPSA



www.graham-center.org

Prepared by the Robert Graham Center:
Policy Studies in Family Medicine
and Primary Care

Data Source: 2003 Area Resource File
(U.S. Department of Health and
Human Services)